

**COUNTY OF SAN BERNARDINO
COMMUNITY FACILITIES DISTRICT
No. 2002-1
(KAISER COMMERCE CENTER)**

July 22, 2014

Public Finance
Public Private Partnerships
Urban Economics

Newport Beach
Fresno
Riverside
San Francisco
Chicago
Dallas

**ADMINISTRATION REPORT
FISCAL YEAR 2014-2015**

**COUNTY OF SAN BERNARDINO
COMMUNITY FACILITIES DISTRICT
No. 2002-1
(KAISER COMMERCE CENTER)**

Prepared for

**COUNTY OF SAN BERNARDINO
157 W. Fifth Street
San Bernardino, California 92371**

Prepared by

**DAVID TAUSSIG & ASSOCIATES, INC.
5000 Birch Street, Suite 6000
Newport Beach, California 92660
(949) 955-1500**

Table of Contents

<i>Section</i>	<i>Page</i>
<i>I. Introduction</i>	1
<i>II. Special Tax Classifications and Development Update</i>	2
Special Tax Classifications	2
Development Update	2
<i>III. Sources and Uses of Funds</i>	3
<i>IV. Fiscal Year 2013-2014 Special Tax Levy</i>	4
<i>V. Fiscal Year 2014-2015 Special Tax Requirement</i>	5
<i>VI. Method of Apportionment</i>	7
Maximum Special Tax Rates	7
Apportionment of Special Taxes	7

EXHIBITS

- Exhibit A: Boundary Map***
Exhibit B: Summary of Transactions to Funds and Accounts from 7/1/2013 to 6/30/2014
Exhibit C: Special Tax Roll Fiscal Year 2014-2015

I. Introduction

This report presents the findings of the research and financial analysis performed by David Taussig & Associates, Inc. to determine the special tax requirement for Community Facilities District No. 2002-1 (Kaiser Commerce Center) (“CFD No. 2002-1”) of the County of San Bernardino (“the County”) for fiscal year 2014-2015.

CFD No. 2002-1 is a legally constituted governmental entity established under the Mello-Roos Community Facilities Act of 1982, (the "Act") as amended. The Act provides an alternative method for the financing of certain public capital facilities and services. Specifically, CFD No. 2002-1 is authorized to issue up to \$30,000,000 in bonds. CFD No. 2002-1 issued \$23,585,000 in bonds in October 2002 to finance certain road, sewer, storm drain, water, and public utility improvements.

CFD No. 2002-1 consists of two separate areas: Improvement Area No. 1 (“IA No. 1”) and Improvement Area No. 2 (“IA No. 2”). The Series 2002 bonds are secured only by the special taxes from IA No. 1. Therefore no special tax will be levied in fiscal year 2014-2015 in IA No. 2. A map showing the property in IA No. 1 and IA No. 2 is included in Exhibit A.

The bonded indebtedness of CFD No. 2002-1 is both secured and repaid through the annual levy and collection of special taxes from property subject to the tax within Improvement Area No. 1. In calculating the special tax liability for fiscal year 2014-2015, this report examines the financial obligations of the current fiscal year and analyzes the level of development within IA No. 1.

This report is organized into the following sections:

Section II

Section II provides an update of the development activity occurring within IA No. 1.

Section III

Section III examines the financial activity in the funds and accounts established pursuant to the bond indenture dated October 1, 2002, between IA No. 1 of CFD No. 2002-1 and the trustee. A year-to-date summary illustrating all disbursements, special tax receipts and interest earnings of the 2002 bonds is provided.

Section IV

Section IV analyzes the previous year's special tax levy.

Section V

Section V determines the financial obligations of IA No. 1 for fiscal year 2014-2015.

Section VI

Section VI reviews the methodology used to apportion the special tax requirement between Developed Property and Undeveloped Property in IA No. 1. A table of the 2014-2015 special tax rates for each classification of property is included.

II. Special Tax Classifications and Development Update

Special Tax Classifications

The methodology employed to calculate and apportion the special tax is contained in a document entitled the Rate and Method of Apportionment for IA No. 1. The Rate and Method of Apportionment defines two primary categories of taxable property within IA No. 1, namely “Developed Property” and “Undeveloped Property.”

Developed Property is distinguished from Undeveloped Property by the issuance of a building permit. Specifically, property for which a building permit was issued between January 2, 2001 and March 1 of the prior Fiscal Year will be classified as Developed Property in the following fiscal year. For example, all property in CFD No. 2002-1 for which a building permit was issued between January 2, 2001 and March 1, 2014, will be classified as Developed Property in fiscal year 2014-2015.

Development Update

Review of the County of San Bernardino’s building permit records indicate that between January 2, 2001 and March 1, 2014 building permits for 335.94 acres of non-residential property had been issued within IA No. 1. During this same period no building permits were issued within IA No. 2. A total of 91.76 acres in IA No. 1 are considered Undeveloped Property. The table below indicates the current amount of Developed Property and Undeveloped Property within IA No. 1.

**Improvement Area No. 1
Community Facility District No. 2002-1
Developed Property and Undeveloped Property**

Land Use	IA No. 1 Number of Units/Acres
Developed Property	335.94 acres
Undeveloped Property	91.76 acres

III. Sources and Uses of Funds

IA No. 1 Series 2002's sources of funds from July 1, 2013 through June 30, 2014 totaled \$1,654,601. This consisted of \$1,654,601 in special tax receipts deposited with the trustee.

Total uses of funds for the time period mentioned above totaled \$1,654,601. Interest and principal payments on the bonds equaled \$1,304,601 and \$300,000, respectively. Payments for professional services incurred by IA No. 1 equaled \$50,000.

A more detailed analysis of all transactions within the Series 2002 funds and accounts for the time period mentioned above is included as Exhibit B.

As of June 30, 2014, the various funds and accounts established for the 2002 bonds had the following balances:

Special Tax Fund [1]	\$993,326 [2]
Redemption Account	\$0
Reserve Account	\$2,261,121 [3]
Expense Fund	\$207
Facilities Fund [1]	\$0
Acquisition and Construction Fund	\$0
Sinking Fund Account	\$0
Prepayment Fund [1]	\$0
Rebate Fund [1]	\$0
[1] Fund is held by the County of San Bernardino. DTA has no statements on file. [2] Special Tax Fund balance as of July 21, 2014 per County. [3] The current Reserve Requirement is equal to \$2,261,120.67	

IV. Fiscal Year 2013-2014 Special Tax Levy

The total special tax levy for fiscal year 2013-2014 equaled \$1,691,651. As of May 7, 2014, all \$1,691,651 in special taxes due for fiscal year 2013-2014 had been collected by the County.

V. Fiscal Year 2014-2015 Special Tax Requirement

For fiscal year 2014-2015, the special tax requirement for IA No. 1 is equal to \$1,724,746 and is calculated as follows:

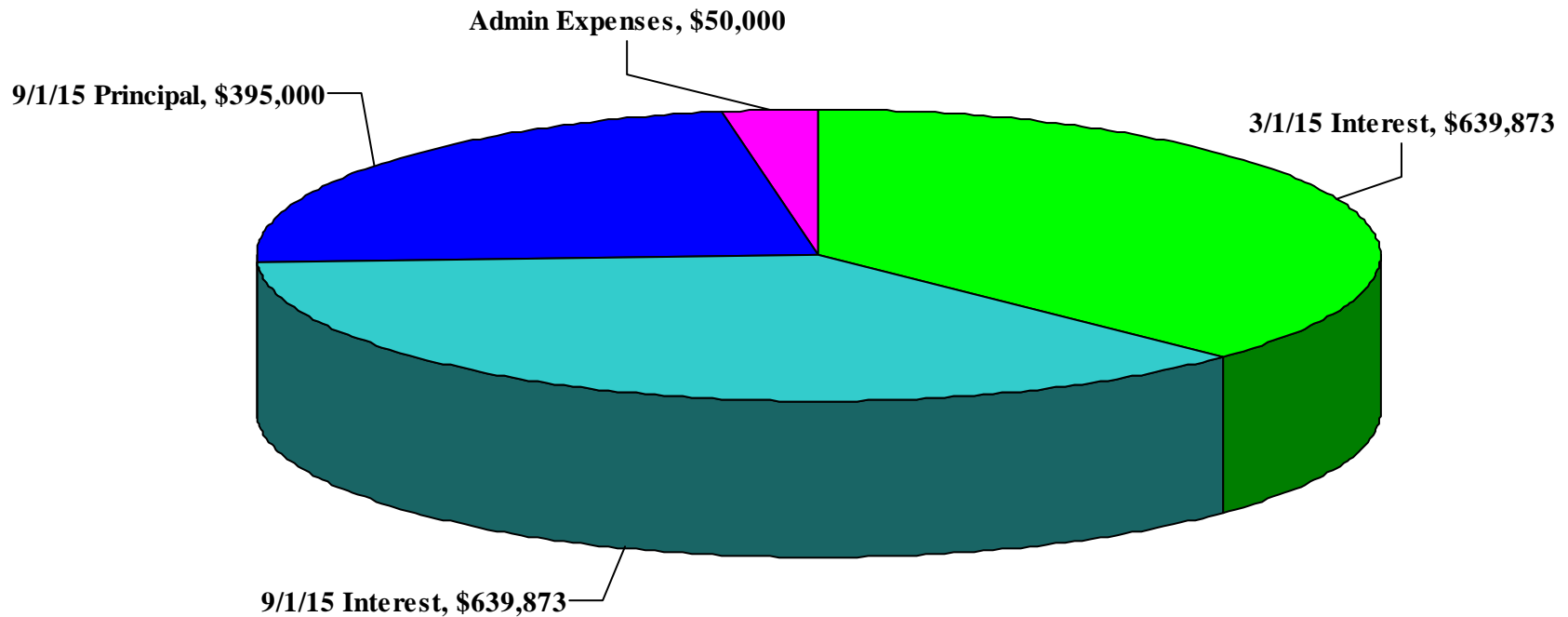
**County of San Bernardino
Community Facilities District No. 2002-1
(Kaiser Commerce Center)
Fiscal Year 2014-2015 Special Tax Requirement**

Fund Balances as of June 30, 2014		\$993,326
Special Tax Fund [1]	\$993,326	
Redemption Fund	\$0	
Surplus Monies in the Reserve Fund	\$0	
Remaining Fiscal Year 2013-2014 Obligations		(\$993,326)
Interest Due September 1, 2014	(\$648,326)	
Principal Due September 1, 2014	(\$345,000)	
Fiscal Year 2013-2014 Surplus / (Draw on Reserve Fund)		\$0
Fiscal Year 2014-2015 Obligations		(\$1,724,746)
Interest Due March 1, 2015	(\$639,873)	
Interest Due September 1, 2015	(\$639,873)	
Principal Due September 1, 2015	(\$395,000)	
Administrative Expenses	(\$50,000)	
Fiscal Year 2014-2015 Special Tax Requirement		\$1,724,746
[1] Special Tax Fund balance as of July 21, 2014 per County.		

The components of the fiscal year 2014-2015 special tax requirements are shown graphically on the following page.

**County of San Bernardino
Improvement Area No. 1 of Community Facilities District No. 2002-1
(Kaiser Commerce Center)**

Fiscal Year 2014-2015 Gross Special Tax Requirement



Gross Special Tax Requirement = \$1,724,746

VI. Method of Apportionment

Maximum Special Tax Rates

The amount of special taxes that IA No. 1 may levy is strictly limited by the maximum rates set forth in Section C of the Rate and Method of Apportionment.¹

The fiscal year 2014-2015 maximum special tax rates for each classification of property in IA No. 1 are shown in the table on the following page. Each July 1, commencing July 1, 2003, the maximum special tax rates shall be increased by an amount equal to two percent of the amount in effect for the previous fiscal year.

Apportionment of Special Taxes

The special tax that is apportioned to each parcel is determined through the application of Section D of the Rate and Method of Apportionment for IA No. 1. The Board shall first determine the Special Tax Requirement. Section D apportions the special tax requirement in four steps that prioritize the order in which Developed Property and Undeveloped Property are taxed.

The first step states that the special tax shall be levied against each parcel of Developed Property at 100 percent of the assigned special tax. If the special taxes raised pursuant to the first step are less than the special tax requirement, then the second step is applied. The second step states that the special tax shall be levied against each parcel of Undeveloped Property at up to 100 percent of the maximum special tax for Undeveloped Property.

The third and fourth steps are designed to accommodate changes in land use and are intended to be used only as a last resort. Since actual land uses have not substantially deviated from the original projections, this step is not necessary.

Application of the first step generates special tax revenues of \$1,600,257 from Developed Property, leaving \$124,489 to be levied against Undeveloped Property. Dividing this amount by the 91.76 acres of Undeveloped Property results in a tax of \$1,356.68 per acre of Undeveloped Property. The fiscal year 2014-2015 maximum and actual special tax rates are shown for each classification of property in the following table and graphically on the following page. The Special Tax Roll, which lists the actual special tax levied against each parcel in IA No. 1, is shown in Exhibit C.

¹ Technically, Section C states that the maximum special tax for a parcel of Developed Property is equal to the greater of (i) the "Backup Special Tax" or (ii) the Assigned Special Tax. The Backup Special Tax was established for the contingency of a shortfall in revenues resulting from significant changes in development densities. The contingency for which the Backup Special Tax was established does not exist and hence, all discussion of maximum tax rates for Developed Property focuses on the Assigned Special Tax.

**Improvement Area No. 1
Fiscal Year 2014-2015 Assigned Maximum Special Taxes for
Developed Property and Undeveloped Property**

Land Use	FY 2014-2015 Assigned/Maximum Special Tax	FY 2014-2015 Actual Special Tax	Percentage of Maximum Special Tax
Developed Property	\$4,763.52 /acre	\$4,763.52 /acre	100.00%
Undeveloped Property	\$5,713.44 /acre	\$1,356.68 /acre	23.75%

taussig-client/San Bernardino County/Admin/14_15/CFD 2002-1/CFD20021_ADM.doc

**County of San Bernardino
Improvement Area No. 1 of Community Facilities District No. 2002-1
(Kaiser Commerce Center)**

Fiscal Year 2014-2015 Special Tax Levy

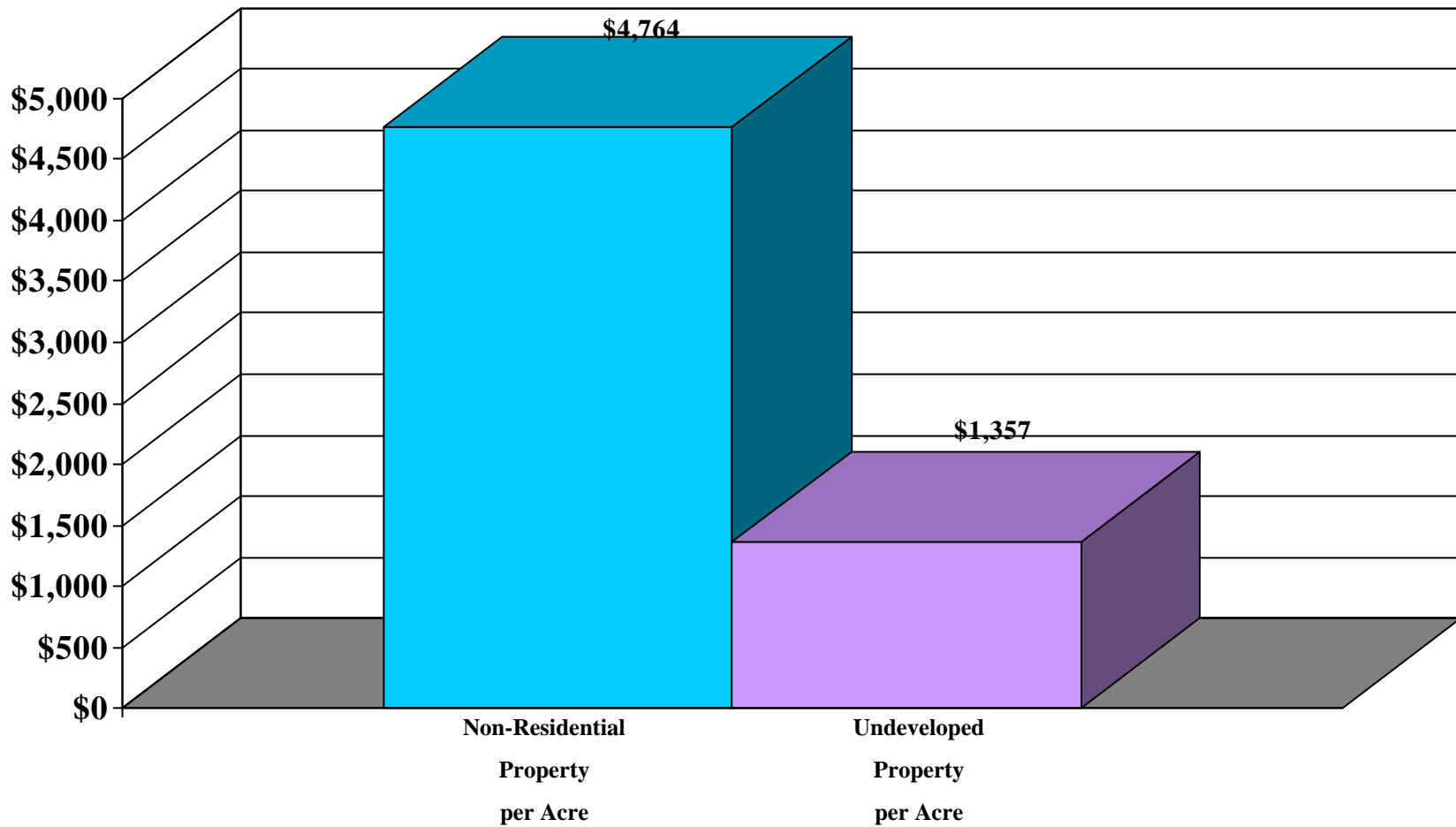


EXHIBIT A

*County of San Bernardino
Community Facilities District No. 2002-1*

Boundary Map

County of San Bernardino
Community Facilities District No. 2002-1
(Kaiser Commerce Center)

Legend

- Improvement Area No. 1
- Improvement Area No. 2

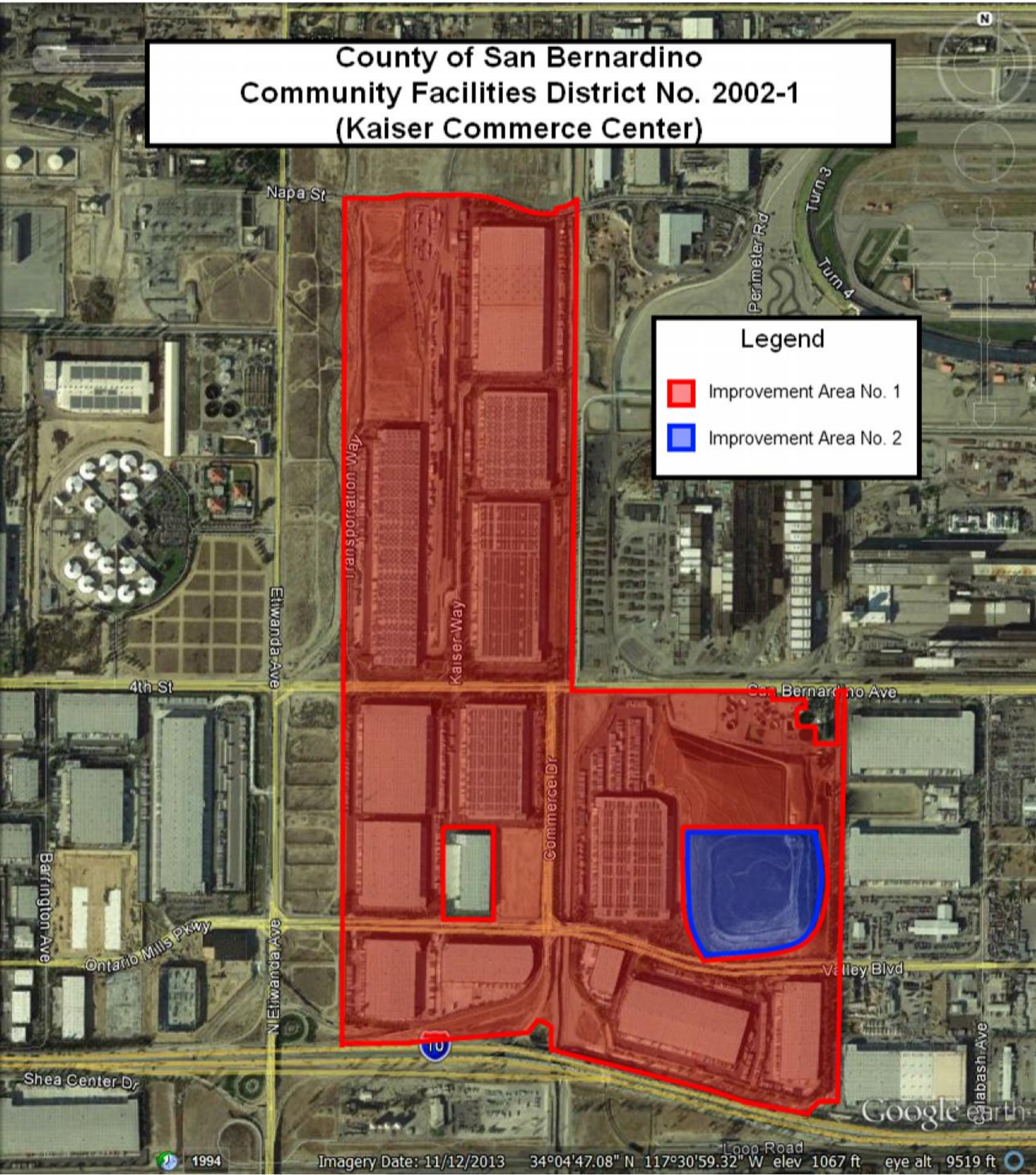


EXHIBIT B

*County of San Bernardino
IA No. 1 of
Community Facilities District No. 2002-1*

*Summary of Transactions to Fund and Accounts
Series 2002*

**COMMUNITY FACILITIES DISTRICT NO. 2002-1 OF THE COUNTY OF SAN BERNARDINO
SERIES 2002 BONDS
FISCAL YEAR 2013-2014**

	ACQUISITION & CONSTRUCTION FUND	FACILITIES FUND [1]	SINKING FUND ACCOUNT	REDEMPTION FUND	RESERVE FUND [2]	PREPAYMENT FUND [1]	SPECIAL TAX FUND [1]	REBATE FUND [1]	EXPENSE FUND	TOTAL
BEGINNING BALANCE	\$0	\$0	\$0	\$0	\$2,261,121	\$0	\$0	\$0	\$207	\$2,261,327
SOURCES OF FUNDS										
SPECIAL TAX RECEIPTS	\$0	\$0	\$0	\$1,604,601	\$0	\$0	\$0	\$0	\$50,000	\$1,654,601
INVESTMENT AGREEMENT EARNINGS	\$0	\$0	\$0	\$0	\$0	\$0	\$0	\$0	\$0	\$0
OTHER INVESTMENT EARNINGS	\$0	\$0	\$0	\$0	\$0	\$0	\$0	\$0	\$0	\$0
<u>MISCELLANEOUS</u>	<u>\$0</u>	<u>\$0</u>	<u>\$0</u>	<u>\$0</u>	<u>\$0</u>	<u>\$0</u>	<u>\$0</u>	<u>\$0</u>	<u>\$0</u>	<u>\$0</u>
TOTAL SOURCES	\$0	\$0	\$0	\$1,604,601	\$0	\$0	\$0	\$0	\$50,000	\$1,654,601
USES OF FUNDS										
INTEREST PAYMENTS	\$0	\$0	\$0	(\$1,304,601)	\$0	\$0	\$0	\$0	\$0	(\$1,304,601)
PRINCIPAL PAYMENTS	\$0	\$0	\$0	(\$300,000)	\$0	\$0	\$0	\$0	\$0	(\$300,000)
PUBLIC FACILITIES	\$0	\$0	\$0	\$0	\$0	\$0	\$0	\$0	\$0	\$0
PROFESSIONAL SERVICES	\$0	\$0	\$0	\$0	\$0	\$0	\$0	\$0	(\$50,000)	(\$50,000)
<u>MISCELLANEOUS</u>	<u>\$0</u>	<u>\$0</u>	<u>\$0</u>	<u>\$0</u>	<u>\$0</u>	<u>\$0</u>	<u>\$0</u>	<u>\$0</u>	<u>\$0</u>	<u>\$0</u>
TOTAL USES	\$0	\$0	\$0	(\$1,604,601)	\$0	\$0	\$0	\$0	(\$50,000)	(\$1,654,601)
TRANSFERS	\$0	\$0	\$0	\$0	\$0	\$0	\$0	\$0	\$0	\$0
ENDING BALANCE	\$0	\$0	\$0	\$0	\$2,261,121	\$0	\$0	\$0	\$207	\$2,261,327

[1] Facilities Fund, Prepayment Fund, Special Tax Fund, and Rebate Fund are held by the County of San Bernardino. DTA has no statements on file.

[2] Reserve Requirement: \$2,261,120.67

**COMMUNITY FACILITIES DISTRICT NO. 2002-1 OF THE COUNTY OF SAN BERNARDINO
SERIES 2002 BONDS
July 2013**

	ACQUISITION & CONSTRUCTION FUND	FACILITIES FUND [1]	SINKING FUND ACCOUNT	REDEMPTION FUND	RESERVE FUND [2]	PREPAYMENT FUND [1]	SPECIAL TAX FUND [1]	REBATE FUND [1]	EXPENSE FUND	TOTAL
BEGINNING BALANCE	\$0	\$0	\$0	\$0	\$2,261,121	\$0	\$0	\$0	\$207	\$2,261,327
SOURCES OF FUNDS										
SPECIAL TAX RECEIPTS	\$0	\$0	\$0	\$0	\$0	\$0	\$0	\$0	\$50,000	\$50,000
INVESTMENT AGREEMENT EARNINGS	\$0	\$0	\$0	\$0	\$0	\$0	\$0	\$0	\$0	\$0
OTHER INVESTMENT EARNINGS	\$0	\$0	\$0	\$0	\$0	\$0	\$0	\$0	\$0	\$0
<u>MISCELLANEOUS</u>	<u>\$0</u>	<u>\$0</u>	<u>\$0</u>	<u>\$0</u>	<u>\$0</u>	<u>\$0</u>	<u>\$0</u>	<u>\$0</u>	<u>\$0</u>	<u>\$0</u>
TOTAL SOURCES	\$0	\$0	\$0	\$0	\$0	\$0	\$0	\$0	\$50,000	\$50,000
USES OF FUNDS										
INTEREST PAYMENTS	\$0	\$0	\$0	\$0	\$0	\$0	\$0	\$0	\$0	\$0
PRINCIPAL PAYMENTS	\$0	\$0	\$0	\$0	\$0	\$0	\$0	\$0	\$0	\$0
PUBLIC FACILITIES	\$0	\$0	\$0	\$0	\$0	\$0	\$0	\$0	\$0	\$0
PROFESSIONAL SERVICES	\$0	\$0	\$0	\$0	\$0	\$0	\$0	\$0	(\$50,000)	(\$50,000)
<u>MISCELLANEOUS</u>	<u>\$0</u>	<u>\$0</u>	<u>\$0</u>	<u>\$0</u>	<u>\$0</u>	<u>\$0</u>	<u>\$0</u>	<u>\$0</u>	<u>\$0</u>	<u>\$0</u>
TOTAL USES	\$0	\$0	\$0	\$0	\$0	\$0	\$0	\$0	(\$50,000)	(\$50,000)
TRANSFERS	\$0	\$0	\$0	\$0	\$0	\$0	\$0	\$0	\$0	\$0
ENDING BALANCE	\$0	\$0	\$0	\$0	\$2,261,121	\$0	\$0	\$0	\$207	\$2,261,327

[1] Facilities Fund, Prepayment Fund, Special Tax Fund, and Rebate Fund are held by the County of San Bernardino. DTA has no statements on file.

[2] Reserve Requirement: \$2,261,120.67

**COMMUNITY FACILITIES DISTRICT NO. 2002-1 OF THE COUNTY OF SAN BERNARDINO
SERIES 2002 BONDS
August 2013**

	ACQUISITION & CONSTRUCTION FUND	FACILITIES FUND [1]	SINKING FUND ACCOUNT	REDEMPTION FUND	RESERVE FUND [2]	PREPAYMENT FUND [1]	SPECIAL TAX FUND [1]	REBATE FUND [1]	EXPENSE FUND	TOTAL
BEGINNING BALANCE	\$0	\$0	\$0	\$0	\$2,261,121	\$0	\$0	\$0	\$207	\$2,261,327
SOURCES OF FUNDS										
SPECIAL TAX RECEIPTS	\$0	\$0	\$0	\$956,276	\$0	\$0	\$0	\$0	\$0	\$956,276
INVESTMENT AGREEMENT EARNINGS	\$0	\$0	\$0	\$0	\$0	\$0	\$0	\$0	\$0	\$0
OTHER INVESTMENT EARNINGS	\$0	\$0	\$0	\$0	\$0	\$0	\$0	\$0	\$0	\$0
<u>MISCELLANEOUS</u>	<u>\$0</u>	<u>\$0</u>	<u>\$0</u>	<u>\$0</u>	<u>\$0</u>	<u>\$0</u>	<u>\$0</u>	<u>\$0</u>	<u>\$0</u>	<u>\$0</u>
TOTAL SOURCES	\$0	\$0	\$0	\$956,276	\$0	\$0	\$0	\$0	\$0	\$956,276
USES OF FUNDS										
INTEREST PAYMENTS	\$0	\$0	\$0	\$0	\$0	\$0	\$0	\$0	\$0	\$0
PRINCIPAL PAYMENTS	\$0	\$0	\$0	\$0	\$0	\$0	\$0	\$0	\$0	\$0
PUBLIC FACILITIES	\$0	\$0	\$0	\$0	\$0	\$0	\$0	\$0	\$0	\$0
PROFESSIONAL SERVICES	\$0	\$0	\$0	\$0	\$0	\$0	\$0	\$0	\$0	\$0
<u>MISCELLANEOUS</u>	<u>\$0</u>	<u>\$0</u>	<u>\$0</u>	<u>\$0</u>	<u>\$0</u>	<u>\$0</u>	<u>\$0</u>	<u>\$0</u>	<u>\$0</u>	<u>\$0</u>
TOTAL USES	\$0	\$0	\$0	\$0	\$0	\$0	\$0	\$0	\$0	\$0
TRANSFERS	\$0	\$0	\$0	\$0	\$0	\$0	\$0	\$0	\$0	\$0
ENDING BALANCE	\$0	\$0	\$0	\$956,276	\$2,261,121	\$0	\$0	\$0	\$207	\$3,217,603

[1] Facilities Fund, Prepayment Fund, Special Tax Fund, and Rebate Fund are held by the County of San Bernardino. DTA has no statements on file.

[2] Reserve Requirement: \$2,261,120.67

**COMMUNITY FACILITIES DISTRICT NO. 2002-1 OF THE COUNTY OF SAN BERNARDINO
SERIES 2002 BONDS
September 2013**

	ACQUISITION & CONSTRUCTION FUND	FACILITIES FUND [1]	SINKING FUND ACCOUNT	REDEMPTION FUND	RESERVE FUND [2]	PREPAYMENT FUND [1]	SPECIAL TAX FUND [1]	REBATE FUND [1]	EXPENSE FUND	TOTAL
BEGINNING BALANCE	\$0	\$0	\$0	\$956,276	\$2,261,121	\$0	\$0	\$0	\$207	\$3,217,603
SOURCES OF FUNDS										
SPECIAL TAX RECEIPTS	\$0	\$0	\$0	\$0	\$0	\$0	\$0	\$0	\$0	\$0
INVESTMENT AGREEMENT EARNINGS	\$0	\$0	\$0	\$0	\$0	\$0	\$0	\$0	\$0	\$0
OTHER INVESTMENT EARNINGS	\$0	\$0	\$0	\$0	\$0	\$0	\$0	\$0	\$0	\$0
MISCELLANEOUS	\$0	\$0	\$0	\$0	\$0	\$0	\$0	\$0	\$0	\$0
TOTAL SOURCES	\$0	\$0	\$0	\$0	\$0	\$0	\$0	\$0	\$0	\$0
USES OF FUNDS										
INTEREST PAYMENTS	\$0	\$0	\$0	(\$656,276)	\$0	\$0	\$0	\$0	\$0	(\$656,276)
PRINCIPAL PAYMENTS	\$0	\$0	\$0	(\$300,000)	\$0	\$0	\$0	\$0	\$0	(\$300,000)
PUBLIC FACILITIES	\$0	\$0	\$0	\$0	\$0	\$0	\$0	\$0	\$0	\$0
PROFESSIONAL SERVICES	\$0	\$0	\$0	\$0	\$0	\$0	\$0	\$0	\$0	\$0
MISCELLANEOUS	\$0	\$0	\$0	\$0	\$0	\$0	\$0	\$0	\$0	\$0
TOTAL USES	\$0	\$0	\$0	(\$956,276)	\$0	\$0	\$0	\$0	\$0	(\$956,276)
TRANSFERS	\$0	\$0	\$0	\$0	\$0	\$0	\$0	\$0	\$0	\$0
ENDING BALANCE	\$0	\$0	\$0	\$0	\$2,261,121	\$0	\$0	\$0	\$207	\$2,261,327

[1] Facilities Fund, Prepayment Fund, Special Tax Fund, and Rebate Fund are held by the County of San Bernardino. DTA has no statements on file.

[2] Reserve Requirement: \$2,261,120.67

**COMMUNITY FACILITIES DISTRICT NO. 2002-1 OF THE COUNTY OF SAN BERNARDINO
SERIES 2002 BONDS
October 2013**

	ACQUISITION & CONSTRUCTION FUND	FACILITIES FUND [1]	SINKING FUND ACCOUNT	REDEMPTION FUND	RESERVE FUND [2]	PREPAYMENT FUND [1]	SPECIAL TAX FUND [1]	REBATE FUND [1]	EXPENSE FUND	TOTAL
BEGINNING BALANCE	\$0	\$0	\$0	\$0	\$2,261,121	\$0	\$0	\$0	\$207	\$2,261,327
SOURCES OF FUNDS										
SPECIAL TAX RECEIPTS	\$0	\$0	\$0	\$0	\$0	\$0	\$0	\$0	\$0	\$0
INVESTMENT AGREEMENT EARNINGS	\$0	\$0	\$0	\$0	\$0	\$0	\$0	\$0	\$0	\$0
OTHER INVESTMENT EARNINGS	\$0	\$0	\$0	\$0	\$0	\$0	\$0	\$0	\$0	\$0
<u>MISCELLANEOUS</u>	<u>\$0</u>	<u>\$0</u>	<u>\$0</u>	<u>\$0</u>	<u>\$0</u>	<u>\$0</u>	<u>\$0</u>	<u>\$0</u>	<u>\$0</u>	<u>\$0</u>
TOTAL SOURCES	\$0	\$0	\$0	\$0	\$0	\$0	\$0	\$0	\$0	\$0
USES OF FUNDS										
INTEREST PAYMENTS	\$0	\$0	\$0	\$0	\$0	\$0	\$0	\$0	\$0	\$0
PRINCIPAL PAYMENTS	\$0	\$0	\$0	\$0	\$0	\$0	\$0	\$0	\$0	\$0
PUBLIC FACILITIES	\$0	\$0	\$0	\$0	\$0	\$0	\$0	\$0	\$0	\$0
PROFESSIONAL SERVICES	\$0	\$0	\$0	\$0	\$0	\$0	\$0	\$0	\$0	\$0
<u>MISCELLANEOUS</u>	<u>\$0</u>	<u>\$0</u>	<u>\$0</u>	<u>\$0</u>	<u>\$0</u>	<u>\$0</u>	<u>\$0</u>	<u>\$0</u>	<u>\$0</u>	<u>\$0</u>
TOTAL USES	\$0	\$0	\$0	\$0	\$0	\$0	\$0	\$0	\$0	\$0
TRANSFERS	\$0	\$0	\$0	\$0	\$0	\$0	\$0	\$0	\$0	\$0
ENDING BALANCE	\$0	\$0	\$0	\$0	\$2,261,121	\$0	\$0	\$0	\$207	\$2,261,327

[1] Facilities Fund, Prepayment Fund, Special Tax Fund, and Rebate Fund are held by the County of San Bernardino. DTA has no statements on file.

[2] Reserve Requirement: \$2,261,120.67

**COMMUNITY FACILITIES DISTRICT NO. 2002-1 OF THE COUNTY OF SAN BERNARDINO
SERIES 2002 BONDS
November 2013**

	ACQUISITION & CONSTRUCTION FUND	FACILITIES FUND [1]	SINKING FUND ACCOUNT	REDEMPTION FUND	RESERVE FUND [2]	PREPAYMENT FUND [1]	SPECIAL TAX FUND [1]	REBATE FUND [1]	EXPENSE FUND	TOTAL
BEGINNING BALANCE	\$0	\$0	\$0	\$0	\$2,261,121	\$0	\$0	\$0	\$207	\$2,261,327
SOURCES OF FUNDS										
SPECIAL TAX RECEIPTS	\$0	\$0	\$0	\$0	\$0	\$0	\$0	\$0	\$0	\$0
INVESTMENT AGREEMENT EARNINGS	\$0	\$0	\$0	\$0	\$0	\$0	\$0	\$0	\$0	\$0
OTHER INVESTMENT EARNINGS	\$0	\$0	\$0	\$0	\$0	\$0	\$0	\$0	\$0	\$0
<u>MISCELLANEOUS</u>	<u>\$0</u>	<u>\$0</u>	<u>\$0</u>	<u>\$0</u>	<u>\$0</u>	<u>\$0</u>	<u>\$0</u>	<u>\$0</u>	<u>\$0</u>	<u>\$0</u>
TOTAL SOURCES	\$0	\$0	\$0	\$0	\$0	\$0	\$0	\$0	\$0	\$0
USES OF FUNDS										
INTEREST PAYMENTS	\$0	\$0	\$0	\$0	\$0	\$0	\$0	\$0	\$0	\$0
PRINCIPAL PAYMENTS	\$0	\$0	\$0	\$0	\$0	\$0	\$0	\$0	\$0	\$0
PUBLIC FACILITIES	\$0	\$0	\$0	\$0	\$0	\$0	\$0	\$0	\$0	\$0
PROFESSIONAL SERVICES	\$0	\$0	\$0	\$0	\$0	\$0	\$0	\$0	\$0	\$0
<u>MISCELLANEOUS</u>	<u>\$0</u>	<u>\$0</u>	<u>\$0</u>	<u>\$0</u>	<u>\$0</u>	<u>\$0</u>	<u>\$0</u>	<u>\$0</u>	<u>\$0</u>	<u>\$0</u>
TOTAL USES	\$0	\$0	\$0	\$0	\$0	\$0	\$0	\$0	\$0	\$0
TRANSFERS	\$0	\$0	\$0	\$0	\$0	\$0	\$0	\$0	\$0	\$0
ENDING BALANCE	\$0	\$0	\$0	\$0	\$2,261,121	\$0	\$0	\$0	\$207	\$2,261,327

[1] Facilities Fund, Prepayment Fund, Special Tax Fund, and Rebate Fund are held by the County of San Bernardino. DTA has no statements on file.

[2] Reserve Requirement: \$2,261,120.67

**COMMUNITY FACILITIES DISTRICT NO. 2002-1 OF THE COUNTY OF SAN BERNARDINO
SERIES 2002 BONDS
December 2013**

	ACQUISITION & CONSTRUCTION FUND	FACILITIES FUND [1]	SINKING FUND ACCOUNT	REDEMPTION FUND	RESERVE FUND [2]	PREPAYMENT FUND [1]	SPECIAL TAX FUND [1]	REBATE FUND [1]	EXPENSE FUND	TOTAL
BEGINNING BALANCE	\$0	\$0	\$0	\$0	\$2,261,121	\$0	\$0	\$0	\$207	\$2,261,327
SOURCES OF FUNDS										
SPECIAL TAX RECEIPTS	\$0	\$0	\$0	\$0	\$0	\$0	\$0	\$0	\$0	\$0
INVESTMENT AGREEMENT EARNINGS	\$0	\$0	\$0	\$0	\$0	\$0	\$0	\$0	\$0	\$0
OTHER INVESTMENT EARNINGS	\$0	\$0	\$0	\$0	\$0	\$0	\$0	\$0	\$0	\$0
<u>MISCELLANEOUS</u>	<u>\$0</u>	<u>\$0</u>	<u>\$0</u>	<u>\$0</u>	<u>\$0</u>	<u>\$0</u>	<u>\$0</u>	<u>\$0</u>	<u>\$0</u>	<u>\$0</u>
TOTAL SOURCES	\$0	\$0	\$0	\$0	\$0	\$0	\$0	\$0	\$0	\$0
USES OF FUNDS										
INTEREST PAYMENTS	\$0	\$0	\$0	\$0	\$0	\$0	\$0	\$0	\$0	\$0
PRINCIPAL PAYMENTS	\$0	\$0	\$0	\$0	\$0	\$0	\$0	\$0	\$0	\$0
PUBLIC FACILITIES	\$0	\$0	\$0	\$0	\$0	\$0	\$0	\$0	\$0	\$0
PROFESSIONAL SERVICES	\$0	\$0	\$0	\$0	\$0	\$0	\$0	\$0	\$0	\$0
<u>MISCELLANEOUS</u>	<u>\$0</u>	<u>\$0</u>	<u>\$0</u>	<u>\$0</u>	<u>\$0</u>	<u>\$0</u>	<u>\$0</u>	<u>\$0</u>	<u>\$0</u>	<u>\$0</u>
TOTAL USES	\$0	\$0	\$0	\$0	\$0	\$0	\$0	\$0	\$0	\$0
TRANSFERS	\$0	\$0	\$0	\$0	\$0	\$0	\$0	\$0	\$0	\$0
ENDING BALANCE	\$0	\$0	\$0	\$0	\$2,261,121	\$0	\$0	\$0	\$207	\$2,261,327

[1] Facilities Fund, Prepayment Fund, Special Tax Fund, and Rebate Fund are held by the County of San Bernardino. DTA has no statements on file.

[2] Reserve Requirement: \$2,261,120.67

**COMMUNITY FACILITIES DISTRICT NO. 2002-1 OF THE COUNTY OF SAN BERNARDINO
SERIES 2002 BONDS
January 2014**

	ACQUISITION & CONSTRUCTION FUND	FACILITIES FUND [1]	SINKING FUND ACCOUNT	REDEMPTION FUND	RESERVE FUND [2]	PREPAYMENT FUND [1]	SPECIAL TAX FUND [1]	REBATE FUND [1]	EXPENSE FUND	TOTAL
BEGINNING BALANCE	\$0	\$0	\$0	\$0	\$2,261,121	\$0	\$0	\$0	\$207	\$2,261,327
SOURCES OF FUNDS										
SPECIAL TAX RECEIPTS	\$0	\$0	\$0	\$0	\$0	\$0	\$0	\$0	\$0	\$0
INVESTMENT AGREEMENT EARNINGS	\$0	\$0	\$0	\$0	\$0	\$0	\$0	\$0	\$0	\$0
OTHER INVESTMENT EARNINGS	\$0	\$0	\$0	\$0	\$0	\$0	\$0	\$0	\$0	\$0
<u>MISCELLANEOUS</u>	<u>\$0</u>	<u>\$0</u>	<u>\$0</u>	<u>\$0</u>	<u>\$0</u>	<u>\$0</u>	<u>\$0</u>	<u>\$0</u>	<u>\$0</u>	<u>\$0</u>
TOTAL SOURCES	\$0	\$0	\$0	\$0	\$0	\$0	\$0	\$0	\$0	\$0
USES OF FUNDS										
INTEREST PAYMENTS	\$0	\$0	\$0	\$0	\$0	\$0	\$0	\$0	\$0	\$0
PRINCIPAL PAYMENTS	\$0	\$0	\$0	\$0	\$0	\$0	\$0	\$0	\$0	\$0
PUBLIC FACILITIES	\$0	\$0	\$0	\$0	\$0	\$0	\$0	\$0	\$0	\$0
PROFESSIONAL SERVICES	\$0	\$0	\$0	\$0	\$0	\$0	\$0	\$0	\$0	\$0
<u>MISCELLANEOUS</u>	<u>\$0</u>	<u>\$0</u>	<u>\$0</u>	<u>\$0</u>	<u>\$0</u>	<u>\$0</u>	<u>\$0</u>	<u>\$0</u>	<u>\$0</u>	<u>\$0</u>
TOTAL USES	\$0	\$0	\$0	\$0	\$0	\$0	\$0	\$0	\$0	\$0
TRANSFERS	\$0	\$0	\$0	\$0	\$0	\$0	\$0	\$0	\$0	\$0
ENDING BALANCE	\$0	\$0	\$0	\$0	\$2,261,121	\$0	\$0	\$0	\$207	\$2,261,327

[1] Facilities Fund, Prepayment Fund, Special Tax Fund, and Rebate Fund are held by the County of San Bernardino. DTA has no statements on file.

[2] Reserve Requirement: \$2,261,120.67

**COMMUNITY FACILITIES DISTRICT NO. 2002-1 OF THE COUNTY OF SAN BERNARDINO
SERIES 2002 BONDS
February 2014**

	ACQUISITION & CONSTRUCTION FUND	FACILITIES FUND [1]	SINKING FUND ACCOUNT	REDEMPTION FUND	RESERVE FUND [2]	PREPAYMENT FUND [1]	SPECIAL TAX FUND [1]	REBATE FUND [1]	EXPENSE FUND	TOTAL
BEGINNING BALANCE	\$0	\$0	\$0	\$0	\$2,261,121	\$0	\$0	\$0	\$207	\$2,261,327
SOURCES OF FUNDS										
SPECIAL TAX RECEIPTS	\$0	\$0	\$0	\$648,326	\$0	\$0	\$0	\$0	\$0	\$648,326
INVESTMENT AGREEMENT EARNINGS	\$0	\$0	\$0	\$0	\$0	\$0	\$0	\$0	\$0	\$0
OTHER INVESTMENT EARNINGS	\$0	\$0	\$0	\$0	\$0	\$0	\$0	\$0	\$0	\$0
<u>MISCELLANEOUS</u>	<u>\$0</u>	<u>\$0</u>	<u>\$0</u>	<u>\$0</u>	<u>\$0</u>	<u>\$0</u>	<u>\$0</u>	<u>\$0</u>	<u>\$0</u>	<u>\$0</u>
TOTAL SOURCES	\$0	\$0	\$0	\$648,326	\$0	\$0	\$0	\$0	\$0	\$648,326
USES OF FUNDS										
INTEREST PAYMENTS	\$0	\$0	\$0	\$0	\$0	\$0	\$0	\$0	\$0	\$0
PRINCIPAL PAYMENTS	\$0	\$0	\$0	\$0	\$0	\$0	\$0	\$0	\$0	\$0
PUBLIC FACILITIES	\$0	\$0	\$0	\$0	\$0	\$0	\$0	\$0	\$0	\$0
PROFESSIONAL SERVICES	\$0	\$0	\$0	\$0	\$0	\$0	\$0	\$0	\$0	\$0
<u>MISCELLANEOUS</u>	<u>\$0</u>	<u>\$0</u>	<u>\$0</u>	<u>\$0</u>	<u>\$0</u>	<u>\$0</u>	<u>\$0</u>	<u>\$0</u>	<u>\$0</u>	<u>\$0</u>
TOTAL USES	\$0	\$0	\$0	\$0	\$0	\$0	\$0	\$0	\$0	\$0
TRANSFERS	\$0	\$0	\$0	\$0	\$0	\$0	\$0	\$0	\$0	\$0
ENDING BALANCE	\$0	\$0	\$0	\$648,326	\$2,261,121	\$0	\$0	\$0	\$207	\$2,909,653

[1] Facilities Fund, Prepayment Fund, Special Tax Fund, and Rebate Fund are held by the County of San Bernardino. DTA has no statements on file.

[2] Reserve Requirement: \$2,261,120.67

**COMMUNITY FACILITIES DISTRICT NO. 2002-1 OF THE COUNTY OF SAN BERNARDINO
SERIES 2002 BONDS
March 2014**

	ACQUISITION & CONSTRUCTION FUND	FACILITIES FUND [1]	SINKING FUND ACCOUNT	REDEMPTION FUND	RESERVE FUND [2]	PREPAYMENT FUND [1]	SPECIAL TAX FUND [1]	REBATE FUND [1]	EXPENSE FUND	TOTAL
BEGINNING BALANCE	\$0	\$0	\$0	\$648,326	\$2,261,121	\$0	\$0	\$0	\$207	\$2,909,653
SOURCES OF FUNDS										
SPECIAL TAX RECEIPTS	\$0	\$0	\$0	\$0	\$0	\$0	\$0	\$0	\$0	\$0
INVESTMENT AGREEMENT EARNINGS	\$0	\$0	\$0	\$0	\$0	\$0	\$0	\$0	\$0	\$0
OTHER INVESTMENT EARNINGS	\$0	\$0	\$0	\$0	\$0	\$0	\$0	\$0	\$0	\$0
<u>MISCELLANEOUS</u>	<u>\$0</u>	<u>\$0</u>	<u>\$0</u>	<u>\$0</u>	<u>\$0</u>	<u>\$0</u>	<u>\$0</u>	<u>\$0</u>	<u>\$0</u>	<u>\$0</u>
TOTAL SOURCES	\$0	\$0	\$0	\$0	\$0	\$0	\$0	\$0	\$0	\$0
USES OF FUNDS										
INTEREST PAYMENTS	\$0	\$0	\$0	(\$648,326)	\$0	\$0	\$0	\$0	\$0	(\$648,326)
PRINCIPAL PAYMENTS	\$0	\$0	\$0	\$0	\$0	\$0	\$0	\$0	\$0	\$0
PUBLIC FACILITIES	\$0	\$0	\$0	\$0	\$0	\$0	\$0	\$0	\$0	\$0
PROFESSIONAL SERVICES	\$0	\$0	\$0	\$0	\$0	\$0	\$0	\$0	\$0	\$0
<u>MISCELLANEOUS</u>	<u>\$0</u>	<u>\$0</u>	<u>\$0</u>	<u>\$0</u>	<u>\$0</u>	<u>\$0</u>	<u>\$0</u>	<u>\$0</u>	<u>\$0</u>	<u>\$0</u>
TOTAL USES	\$0	\$0	\$0	(\$648,326)	\$0	\$0	\$0	\$0	\$0	(\$648,326)
TRANSFERS	\$0	\$0	\$0	\$0	\$0	\$0	\$0	\$0	\$0	\$0
ENDING BALANCE	\$0	\$0	\$0	\$0	\$2,261,121	\$0	\$0	\$0	\$207	\$2,261,327

[1] Facilities Fund, Prepayment Fund, Special Tax Fund, and Rebate Fund are held by the County of San Bernardino. DTA has no statements on file.

[2] Reserve Requirement: \$2,261,120.67

**COMMUNITY FACILITIES DISTRICT NO. 2002-1 OF THE COUNTY OF SAN BERNARDINO
SERIES 2002 BONDS
April 2014**

	ACQUISITION & CONSTRUCTION FUND	FACILITIES FUND [1]	SINKING FUND ACCOUNT	REDEMPTION FUND	RESERVE FUND [2]	PREPAYMENT FUND [1]	SPECIAL TAX FUND [1]	REBATE FUND [1]	EXPENSE FUND	TOTAL
BEGINNING BALANCE	\$0	\$0	\$0	\$0	\$2,261,121	\$0	\$0	\$0	\$207	\$2,261,327
SOURCES OF FUNDS										
SPECIAL TAX RECEIPTS	\$0	\$0	\$0	\$0	\$0	\$0	\$0	\$0	\$0	\$0
INVESTMENT AGREEMENT EARNINGS	\$0	\$0	\$0	\$0	\$0	\$0	\$0	\$0	\$0	\$0
OTHER INVESTMENT EARNINGS	\$0	\$0	\$0	\$0	\$0	\$0	\$0	\$0	\$0	\$0
<u>MISCELLANEOUS</u>	<u>\$0</u>	<u>\$0</u>	<u>\$0</u>	<u>\$0</u>	<u>\$0</u>	<u>\$0</u>	<u>\$0</u>	<u>\$0</u>	<u>\$0</u>	<u>\$0</u>
TOTAL SOURCES	\$0	\$0	\$0	\$0	\$0	\$0	\$0	\$0	\$0	\$0
USES OF FUNDS										
INTEREST PAYMENTS	\$0	\$0	\$0	\$0	\$0	\$0	\$0	\$0	\$0	\$0
PRINCIPAL PAYMENTS	\$0	\$0	\$0	\$0	\$0	\$0	\$0	\$0	\$0	\$0
PUBLIC FACILITIES	\$0	\$0	\$0	\$0	\$0	\$0	\$0	\$0	\$0	\$0
PROFESSIONAL SERVICES	\$0	\$0	\$0	\$0	\$0	\$0	\$0	\$0	\$0	\$0
<u>MISCELLANEOUS</u>	<u>\$0</u>	<u>\$0</u>	<u>\$0</u>	<u>\$0</u>	<u>\$0</u>	<u>\$0</u>	<u>\$0</u>	<u>\$0</u>	<u>\$0</u>	<u>\$0</u>
TOTAL USES	\$0	\$0	\$0	\$0	\$0	\$0	\$0	\$0	\$0	\$0
TRANSFERS	\$0	\$0	\$0	\$0	\$0	\$0	\$0	\$0	\$0	\$0
ENDING BALANCE	\$0	\$0	\$0	\$0	\$2,261,121	\$0	\$0	\$0	\$207	\$2,261,327

[1] Facilities Fund, Prepayment Fund, Special Tax Fund, and Rebate Fund are held by the County of San Bernardino. DTA has no statements on file.

[2] Reserve Requirement: \$2,261,120.67

**COMMUNITY FACILITIES DISTRICT NO. 2002-1 OF THE COUNTY OF SAN BERNARDINO
SERIES 2002 BONDS
May 2014**

	ACQUISITION & CONSTRUCTION FUND	FACILITIES FUND [1]	SINKING FUND ACCOUNT	REDEMPTION FUND	RESERVE FUND [2]	PREPAYMENT FUND [1]	SPECIAL TAX FUND [1]	REBATE FUND [1]	EXPENSE FUND	TOTAL
BEGINNING BALANCE	\$0	\$0	\$0	\$0	\$2,261,121	\$0	\$0	\$0	\$207	\$2,261,327
SOURCES OF FUNDS										
SPECIAL TAX RECEIPTS	\$0	\$0	\$0	\$0	\$0	\$0	\$0	\$0	\$0	\$0
INVESTMENT AGREEMENT EARNINGS	\$0	\$0	\$0	\$0	\$0	\$0	\$0	\$0	\$0	\$0
OTHER INVESTMENT EARNINGS	\$0	\$0	\$0	\$0	\$0	\$0	\$0	\$0	\$0	\$0
<u>MISCELLANEOUS</u>	<u>\$0</u>	<u>\$0</u>	<u>\$0</u>	<u>\$0</u>	<u>\$0</u>	<u>\$0</u>	<u>\$0</u>	<u>\$0</u>	<u>\$0</u>	<u>\$0</u>
TOTAL SOURCES	\$0	\$0	\$0	\$0	\$0	\$0	\$0	\$0	\$0	\$0
USES OF FUNDS										
INTEREST PAYMENTS	\$0	\$0	\$0	\$0	\$0	\$0	\$0	\$0	\$0	\$0
PRINCIPAL PAYMENTS	\$0	\$0	\$0	\$0	\$0	\$0	\$0	\$0	\$0	\$0
PUBLIC FACILITIES	\$0	\$0	\$0	\$0	\$0	\$0	\$0	\$0	\$0	\$0
PROFESSIONAL SERVICES	\$0	\$0	\$0	\$0	\$0	\$0	\$0	\$0	\$0	\$0
<u>MISCELLANEOUS</u>	<u>\$0</u>	<u>\$0</u>	<u>\$0</u>	<u>\$0</u>	<u>\$0</u>	<u>\$0</u>	<u>\$0</u>	<u>\$0</u>	<u>\$0</u>	<u>\$0</u>
TOTAL USES	\$0	\$0	\$0	\$0	\$0	\$0	\$0	\$0	\$0	\$0
TRANSFERS	\$0	\$0	\$0	\$0	\$0	\$0	\$0	\$0	\$0	\$0
ENDING BALANCE	\$0	\$0	\$0	\$0	\$2,261,121	\$0	\$0	\$0	\$207	\$2,261,327

[1] Facilities Fund, Prepayment Fund, Special Tax Fund, and Rebate Fund are held by the County of San Bernardino. DTA has no statements on file.

[2] Reserve Requirement: \$2,261,120.67

**COMMUNITY FACILITIES DISTRICT NO. 2002-1 OF THE COUNTY OF SAN BERNARDINO
SERIES 2002 BONDS
June 2014**

	ACQUISITION & CONSTRUCTION FUND	FACILITIES FUND [1]	SINKING FUND ACCOUNT	REDEMPTION FUND	RESERVE FUND [2]	PREPAYMENT FUND [1]	SPECIAL TAX FUND [1]	REBATE FUND [1]	EXPENSE FUND	TOTAL
BEGINNING BALANCE	\$0	\$0	\$0	\$0	\$2,261,121	\$0	\$0	\$0	\$207	\$2,261,327
SOURCES OF FUNDS										
SPECIAL TAX RECEIPTS	\$0	\$0	\$0	\$0	\$0	\$0	\$0	\$0	\$0	\$0
INVESTMENT AGREEMENT EARNINGS	\$0	\$0	\$0	\$0	\$0	\$0	\$0	\$0	\$0	\$0
OTHER INVESTMENT EARNINGS	\$0	\$0	\$0	\$0	\$0	\$0	\$0	\$0	\$0	\$0
<u>MISCELLANEOUS</u>	<u>\$0</u>	<u>\$0</u>	<u>\$0</u>	<u>\$0</u>	<u>\$0</u>	<u>\$0</u>	<u>\$0</u>	<u>\$0</u>	<u>\$0</u>	<u>\$0</u>
TOTAL SOURCES	\$0	\$0	\$0	\$0	\$0	\$0	\$0	\$0	\$0	\$0
USES OF FUNDS										
INTEREST PAYMENTS	\$0	\$0	\$0	\$0	\$0	\$0	\$0	\$0	\$0	\$0
PRINCIPAL PAYMENTS	\$0	\$0	\$0	\$0	\$0	\$0	\$0	\$0	\$0	\$0
PUBLIC FACILITIES	\$0	\$0	\$0	\$0	\$0	\$0	\$0	\$0	\$0	\$0
PROFESSIONAL SERVICES	\$0	\$0	\$0	\$0	\$0	\$0	\$0	\$0	\$0	\$0
<u>MISCELLANEOUS</u>	<u>\$0</u>	<u>\$0</u>	<u>\$0</u>	<u>\$0</u>	<u>\$0</u>	<u>\$0</u>	<u>\$0</u>	<u>\$0</u>	<u>\$0</u>	<u>\$0</u>
TOTAL USES	\$0	\$0	\$0	\$0	\$0	\$0	\$0	\$0	\$0	\$0
TRANSFERS	\$0	\$0	\$0	\$0	\$0	\$0	\$0	\$0	\$0	\$0
ENDING BALANCE	\$0	\$0	\$0	\$0	\$2,261,121	\$0	\$0	\$0	\$207	\$2,261,327

[1] Facilities Fund, Prepayment Fund, Special Tax Fund, and Rebate Fund are held by the County of San Bernardino. DTA has no statements on file.

[2] Reserve Requirement: \$2,261,120.67

EXHIBIT C

*County of San Bernardino
IA No. 1 of
Community Facilities District No. 2002-1*

*Special Tax Roll
Fiscal Year 2014-2015*

Exhibit B

**IA No. 1 of County of San Bernardino
Community Facilities District 2002-1
(Kaiser Commerce Center)
FY 2014-2015 Special Tax Levy**

APN	FY 2014-2015 <u>SPECIAL TAX</u>
0229-291-56	\$2,672.67
0229-371-14	\$186,968.16
0229-371-15	\$24,271.09
0229-371-16	\$3,527.38
0229-371-17	\$13,973.85
0229-371-18	\$16,429.45
0229-371-19	\$35,056.73
0229-371-20	\$181,918.83
0229-371-23	\$110,894.75
0229-381-05	\$185,634.38
0238-031-19	\$12,277.99
0238-031-26	\$124,756.59
0238-031-27	\$124,804.22
0238-031-28	\$98,176.15
0238-031-30	\$16,280.21
0238-031-31	\$171,772.53
0238-031-41	\$92,936.28
0238-031-42	\$67,641.98
0238-063-06	\$21,959.83
0238-063-10	\$78,312.27
0238-063-11	\$154,480.95
Total Number of Parcels Taxed	21
Total FY 2014-2015 Special Tax	\$1,724,746.29