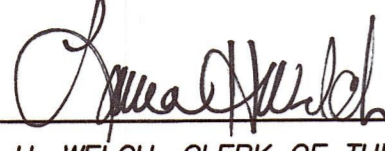



**PROPOSED BOUNDARIES OF ANNEXATION NO. 11  
COMMUNITY FACILITIES DISTRICT 2010-1 (EAST VALLEY)  
COUNTY OF SAN BERNARDINO, STATE OF CALIFORNIA**

PAGE 1 OF 1  
EXEMPT RECORDING REQUESTED,  
PER CA GOVERNMENT CODE  
§§6103


FILED IN THE OFFICE OF THE CLERK OF THE BOARD OF SUPERVISORS OF THE COUNTY OF SAN BERNARDINO THIS 16th DAY OF May, 2017.

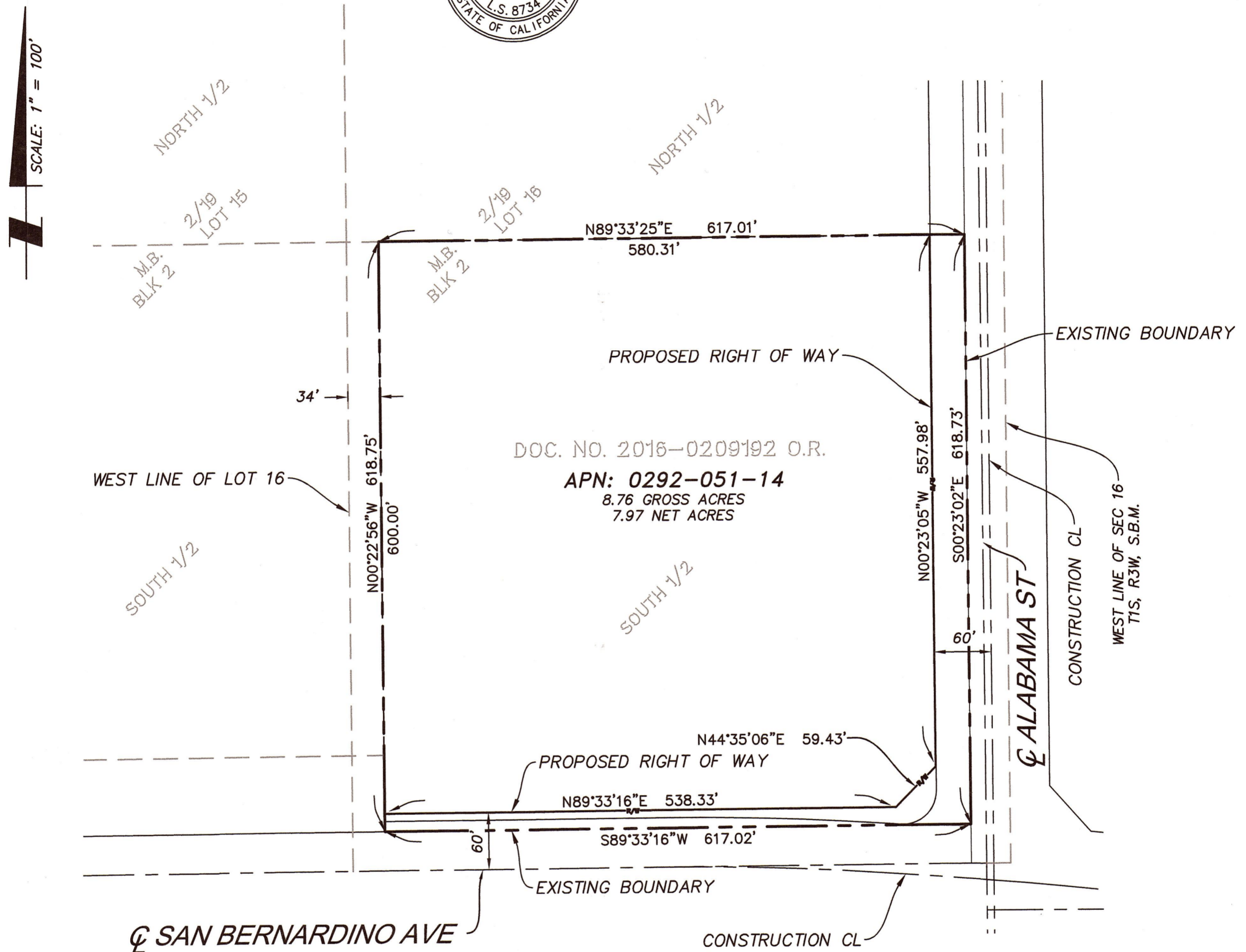
  
LAURA H. WELCH, CLERK OF THE BOARD  
COUNTY OF SAN BERNARDINO

PREPARED BY:  
R. MICHAEL CAUGHEY  
SB&O INC.  
41689 ENTERPRISE CIRCLE N. STE.  
126  
TEMECULA, CALIFORNIA 92590

  
R. MICHAEL CAUGHEY, P.L.S. 8734      3/30/17  
DATE

I HEREBY CERTIFY THAT THE WITHIN MAP SHOWING THE PROPOSED BOUNDARIES OF ANNEXATION NO. 11 OF COUNTY OF SAN BERNARDINO COMMUNITY FACILITIES DISTRICT NO. 2010-1 (EAST VALLEY), SAN BERNARDINO COUNTY, STATE OF CALIFORNIA, WAS APPROVED BY THE BOARD OF SUPERVISORS OF THE COUNTY OF SAN BERNARDINO AT A REGULAR MEETING THEREOF, HELD ON THE 30th DAY OF May, 2017, BY ITS RESOLUTION NO. 2017-81

  
LAURA H. WELCH, CLERK OF THE BOARD  
COUNTY OF SAN BERNARDINO



ASSESSORS' PARCEL NUMBER WITHIN THE BOUNDARIES OF ANNEXATION NO. 11 CFD 2010-1:  
0292-051-14  
ASSESSORS PARCEL NUMBER

REFERENCE IS MADE TO THE ASSESSOR MAPS OF THE COUNTY OF SAN BERNARDINO FOR A DESCRIPTION OF THE LINES AND DIMENSIONS OF THE LOT AND PARCEL, AND THE MAP OF THE BOUNDARIES OF COUNTY OF SAN BERNARDINO COMMUNITY FACILITIES DISTRICT NO. 2010-1 (EAST VALLEY) RECORDED ON JUNE 14, 2010, IN BOOK NO. 84 OF MAPS OF ASSESSMENT AND COMMUNITY FACILITIES DISTRICT AT PAGES 78-89, ON MARCH 29, 2012, IN BOOK NO. 85 OF MAPS OF ASSESSMENT AND COMMUNITY FACILITIES DISTRICT AT PAGE 29 AND ON APRIL 1, 2013, IN BOOK NO. 85 OF MAPS OF ASSESSMENT AND COMMUNITY FACILITIES DISTRICT AT PAGE 62 AND ON APRIL 5, 2013, IN BOOK NO. 85 OF MAPS OF ASSESSMENT AND COMMUNITY FACILITIES DISTRICT AT PAGE 64 AND ON APRIL 17, 2014 IN BOOK 86 OF MAPS OF ASSESSMENT AND COMMUNITY FACILITIES DISTRICTS, AT PAGE 15 AND ON JUNE 6, 2014, IN BOOK 86 OF MAPS OF ASSESSMENT AND COMMUNITY FACILITIES DISTRICTS, AT PAGE 24 AND ON SEPTEMBER 16, 2014, IN BOOK 86 OF MAPS OF ASSESSMENT AND COMMUNITY FACILITIES DISTRICTS, AT PAGE 29 AND ON MARCH 9, 2015, IN BOOK 86 OF MAPS OF ASSESSMENT AND COMMUNITY FACILITIES DISTRICTS, AT PAGE 47 AND ON APRIL 15, 2015, IN BOOK 86 OF MAPS OF ASSESSMENT AND COMMUNITY FACILITIES DISTRICTS AT PAGE 49, AND ON AUGUST 4, 2015 IN BOOK 86 OF MAPS OF ASSESSMENT AND COMMUNITY FACILITIES DISTRICTS AT PAGE 89 AND ON JANUARY 17, 2017, IN BOOK 87 OF MAPS OF ASSESSMENT AND COMMUNITY FACILITIES DISTRICTS AT PAGE 36 IN THE OFFICIAL RECORDS OF THE SAN BERNARDINO COUNTY RECORDER, STATE OF CALIFORNIA.

Recorded in Official Records,  
County of San Bernardino  
Doc#: 2017-0220148  
5/30/2017 10:17 AM

**LEGAL DESCRIPTION:**


THE LAND REFERRED TO HEREIN BELOW IS SITUATED IN THE UNINCORPORATED AREA OF SAN BERNARDINO, IN THE COUNTY OF SAN BERNARDINO, STATE OF CALIFORNIA, AND IS DESCRIBED AS FOLLOWS:

THE SOUTH 1/2 OF LOT 16 IN BLOCK 2, ACCORDING TO MAP NO. 1 OF HENRY L. WILLIAMS TRACT, IN THE COUNTY OF SAN BERNARDINO, STATE OF CALIFORNIA, AS PER PLAT RECORDED IN BOOK 2 OF MAPS, PAGE 19, RECORDS OF SAID COUNTY.

EXCEPTING THEREFROM THE WEST 34 FEET THEREOF.

**SAN BERNARDINO COUNTY RECORDERS CERTIFICATE**

THIS MAP HAS BEEN FILED UNDER THE DOCUMENT NUMBER 2017-0220148, THIS 30th DAY OF MAY, 2017, AT 10:17 AM IN BOOK 87 OF MAPS OF ASSESSMENT AND COMMUNITY FACILITIES DISTRICTS AT PAGE(S) 52 AT THE REQUEST OF THE COUNTY OF SAN BERNARDINO COMMUNITY FACILITIES DISTRICT 2010-1 IN THE AMOUNT OF \$0.00

ASSESSOR-RECORDER-COUNTY CLERK  
COUNTY OF SAN BERNARDINO  
BY:   
DEPUTY RECORDER