

PROPOSED BOUNDARIES OF ANNEXATION NO. 6
 COMMUNITY FACILITIES DISTRICT 2010-1 (EAST VALLEY)
 COUNTY OF SAN BERNARDINO, STATE OF CALIFORNIA

EXEMPT RECORDING REQUESTED,
 PER CA GOVERNMENT CODE
 §86103

FILED IN THE OFFICE OF THE CLERK OF THE
 BOARD OF SUPERVISORS OF THE COUNTY OF
 SAN BERNARDINO THIS 15th DAY OF
August, 2014.

Laura H. Welch
 LAURA H. WELCH, CLERK OF THE BOARD
 COUNTY OF SAN BERNARDINO

PREPARED BY:

TEI Thienes Engineering, Inc.
 CIVIL ENGINEERING • LAND SURVEYING
 14349 FIRESTONE BOULEVARD
 LA MIRADA, CALIFORNIA 90638
 PH. (714) 521-4811 FAX (714) 521-4173

SURVEYOR:

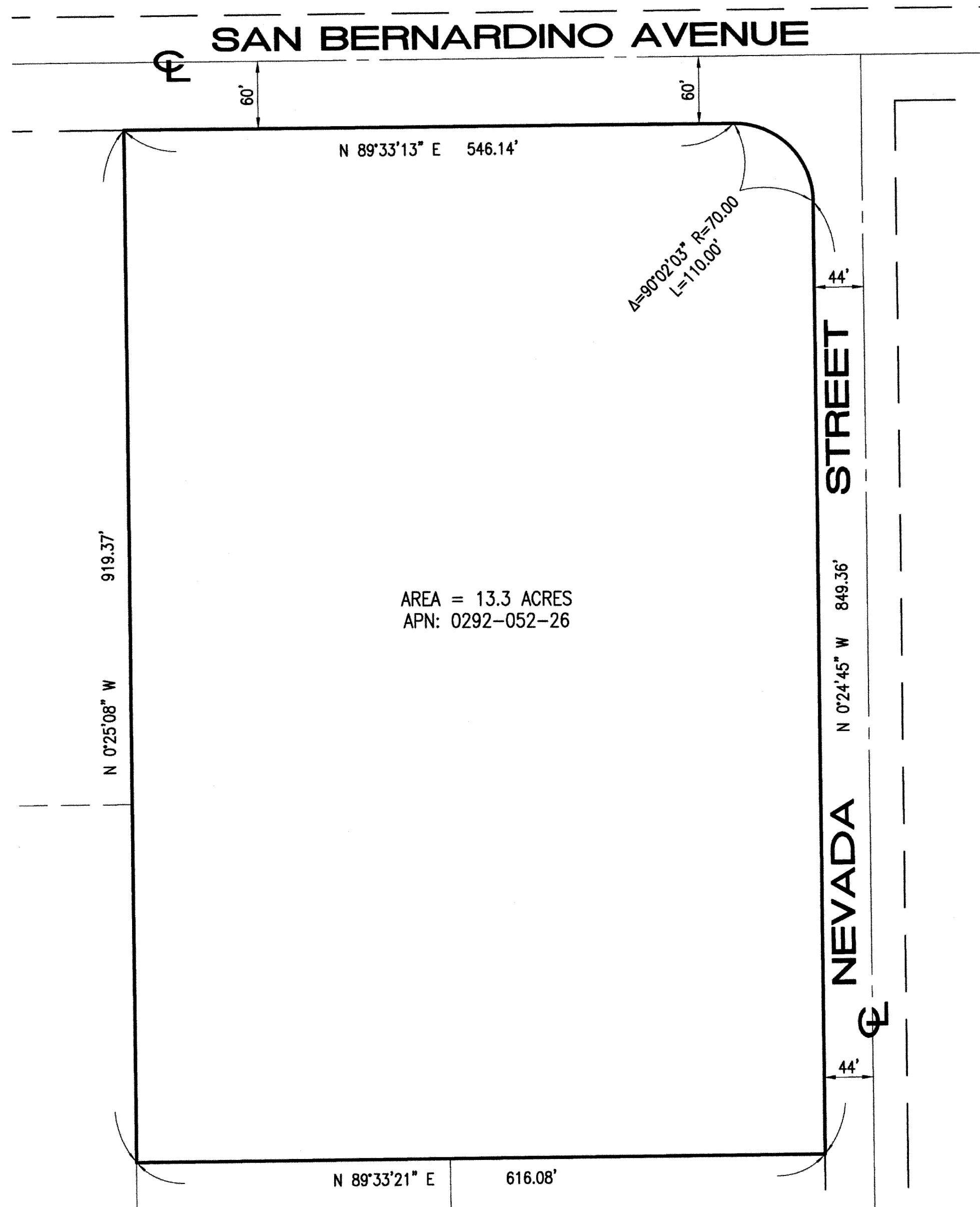
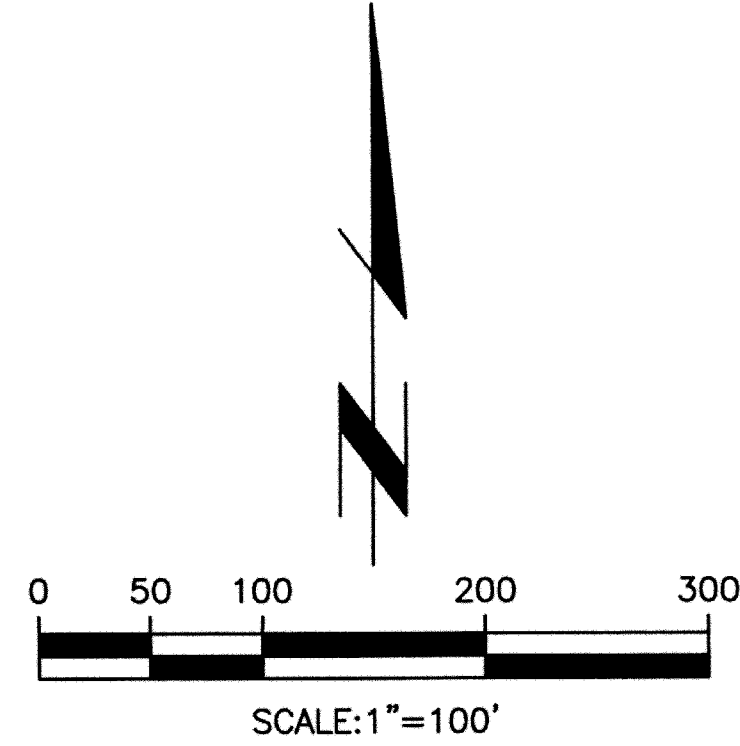
PREPARED UNDER THE DIRECTION OF:

Brian L. Thienes
 BRIAN L. THIENES
 P.L.S. NO. 5750
 REG. EXP. 12/31/15
 DATE: 7/30/14



I HEREBY CERTIFY THAT THE WITHIN MAP SHOWING
 THE PROPOSED BOUNDARIES OF ANNEXATION NO. 6
 OF COUNTY OF SAN BERNARDINO COMMUNITY FACILITIES
 DISTRICT NO. 2010-1 (EAST VALLEY), SAN BERNARDINO
 COUNTY, STATE OF CALIFORNIA, WAS APPROVED BY THE
 BOARD OF SUPERVISORS OF THE COUNTY OF SAN
 BERNARDINO AT A REGULAR MEETING THEREOF, HELD
 ON THE 9th DAY OF Sept, 2014, BY ITS
 RESOLUTION NO. 2014-197.

Laura H. Welch
 LAURA H. WELCH, CLERK OF THE BOARD
 COUNTY OF SAN BERNARDINO



LEGAL DESCRIPTION:

LOT 1, BLOCK 7, HENRY L. WILLIAMS TRACT AS PER MAP
 RECORDED IN BOOK 11, PAGE 17 OF MAPS, IN THE OFFICE
 OF THE COUNTY RECORDER OF SAID COUNTY TOGETHER
 WITH THAT PORTION OF LOT 8 IN BLOCK 7, H.L. WILLIAMS
 TRACT DESCRIBED AS FOLLOWS: BEGINNING AT THE
 NORTHEASTERLY CORNER OF SAID LOT 8; THENCE SOUTH
 319 FEET, 4 INCHES; THENCE WEST 660 FEET; THENCE
 NORTH 319 FEET, 4 INCHES; THENCE EAST 660 FEET TO
 THE POINT OF BEGINNING; EXCEPTING THEREFROM A RECTANGULAR
 TRACT OF LAND (CALLED WELLSITE) 25 FEET NORTH
 AND SOUTH BY 40 FEET EAST AND WEST, LYING IN THE
 SOUTHEASTERLY CORNER OF THAT PORTION OF SAID LOT
 8, HEREBEFORE DESCRIBED, THE EASTERLY SIDE OF
 SAID WELLSITE COINCIDING WITH THE WEST LINE OF NEVADA
 STREET AND THE SOUTHERLY SIDE OF SAID WELLSITE
 COINCIDING WITH THE SOUTH LINE OF SAID PORTION OF
 SAID LOT 8 HEREBEFORE DESCRIBED, TOGETHER WITH A
 PORTION OF LOT 8 IN BLOCK 7, H.L. WILLIAMS TRACT,
 DESCRIBED AS FOLLOWS: BEGINNING AT THE INTERSECTION
 OF THE SOUTH LINE OF THE NORTH 319 FEET 4 INCHES
 OF SAID LOT 8, AND THE WEST LINE OF NEVADA STREET,
 60.00 FEET WIDE; THENCE WEST ALONG THE SOUTH LINE
 OF SAID NORTH 319 FEET 4 INCHES, A DISTANCE OF 40
 FEET; THENCE NORTH PARALLEL WITH THE WEST LINE OF
 SAID NEVADA STREET 25 FEET; THENCE EAST PARALLEL
 WITH THE SOUTH LINE OF SAID NORTH 319 FEET 4 INCHES,
 A DISTANCE OF 40 FEET TO A POINT ON THE WEST LINE
 OF SAID NEVADA STREET; THENCE SOUTH ALONG THE WEST
 LINE OF SAID NEVADA STREET, 25 FEET TO THE POINT OF
 BEGINNING.

ASSESSOR'S PARCEL NUMBER WITHIN THE
 BOUNDARIES OF ANNEXATION NO. 6,
 CFD 2010-1:
 0292-052-26

REFERENCE IS MADE TO THE ASSESSOR
 MAPS OF THE COUNTY OF SAN BERNARDINO
 FOR A DESCRIPTION OF THE LINES AND
 DIMENSIONS OF THE LOT AND PARCEL, AND
 THE MAP OF THE BOUNDARIES OF COUNTY
 OF SAN BERNARDINO COMMUNITY FACILITIES
 DISTRICT NO. 2010-1 (EAST VALLEY)
 RECORDED ON JUNE 14, 2010, IN BOOK
 NO. 84 OF MAPS OF ASSESSMENT AND
 COMMUNITY FACILITIES DISTRICT AT PAGES
 78-89, ON MARCH 29, 2012, IN BOOK NO.
 85 OF MAPS OF ASSESSMENT AND COMMUNITY
 FACILITIES DISTRICT AT PAGE 29 AND ON
 JANUARY 31, 2013 IN BOOK NO. 85 OF
 MAPS OF ASSESSMENT AND COMMUNITY
 FACILITIES DISTRICT AT PAGE 64 AND ON
 APRIL 5, 2013 IN BOOK NO. 85 OF MAPS
 OF ASSESSMENT AND COMMUNITY FACILITIES
 DISTRICT AT PAGE 64 AND ON APRIL 17,
 2014 IN BOOK 86 OF MAPS OF ASSESSMENT
 AND COMMUNITY FACILITIES DISTRICT AT PAGE
 15 ON JUNE 6, 2014 IN BOOK 86 OF MAPS
 OF ASSESSMENT AND COMMUNITY FACILITIES
 DISTRICT, AT PAGE 24 AS PER INSTRUMENT
 NO. 2014-0205185 IN THE OFFICIAL RECORDS
 24 AS PER INSTRUMENT NO. 2014-0205185
 OF THE SAN BERNARDINO COUNTY RECORDER.

San Bernardino County Recorder's Certificate

This map has been filed under Document
 Number 2014 0340531, this 16th day of
September 2014, at 9:38 AM in Book 86
 of Maps of Assessment and Community Facilities
 Districts at Page(s) 29, at the Request of the
 County of San Bernardino Community Facilities
 District 2010-1 in the amount of \$ 0.00.

Recorded in Official Records,
 County of San Bernardino
 Doc#: 2014-0340531
 9/16/2014 9:38 AM

Dennis Draeger
 Assessor-Recorder-Clerk
 County of San Bernardino

By: *Dennis Draeger*
 Deputy Recorder