

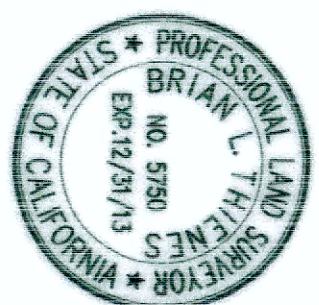
PROPOSED BOUNDARIES OF ANNEXATION NO. 3
COMMUNITY FACILITIES DISTRICT 2010-1 (EAST VALLEY)
COUNTY OF SAN BERNARDINO, STATE OF CALIFORNIA

EXEMPT RECORDING REQUESTED,
PER CA GOVERNMENT CODE
§§6103

FILED IN THE OFFICE OF THE CLERK OF THE
BOARD OF SUPERVISORS OF THE COUNTY OF
SAN BERNARDINO THIS 4th DAY OF
March, 2013.

Christy Wood
LAURA H. WELCH, CLERK OF THE BOARD
COUNTY OF SAN BERNARDINO

PREPARED BY:
Thienes Engineering, Inc.
CIVIL ENGINEERING • LAND SURVEYING
14349 FIRESTONE BOULEVARD
LA MIRADA, CALIFORNIA 90638
PH: (714) 521-4811 FAX: (714) 521-4173



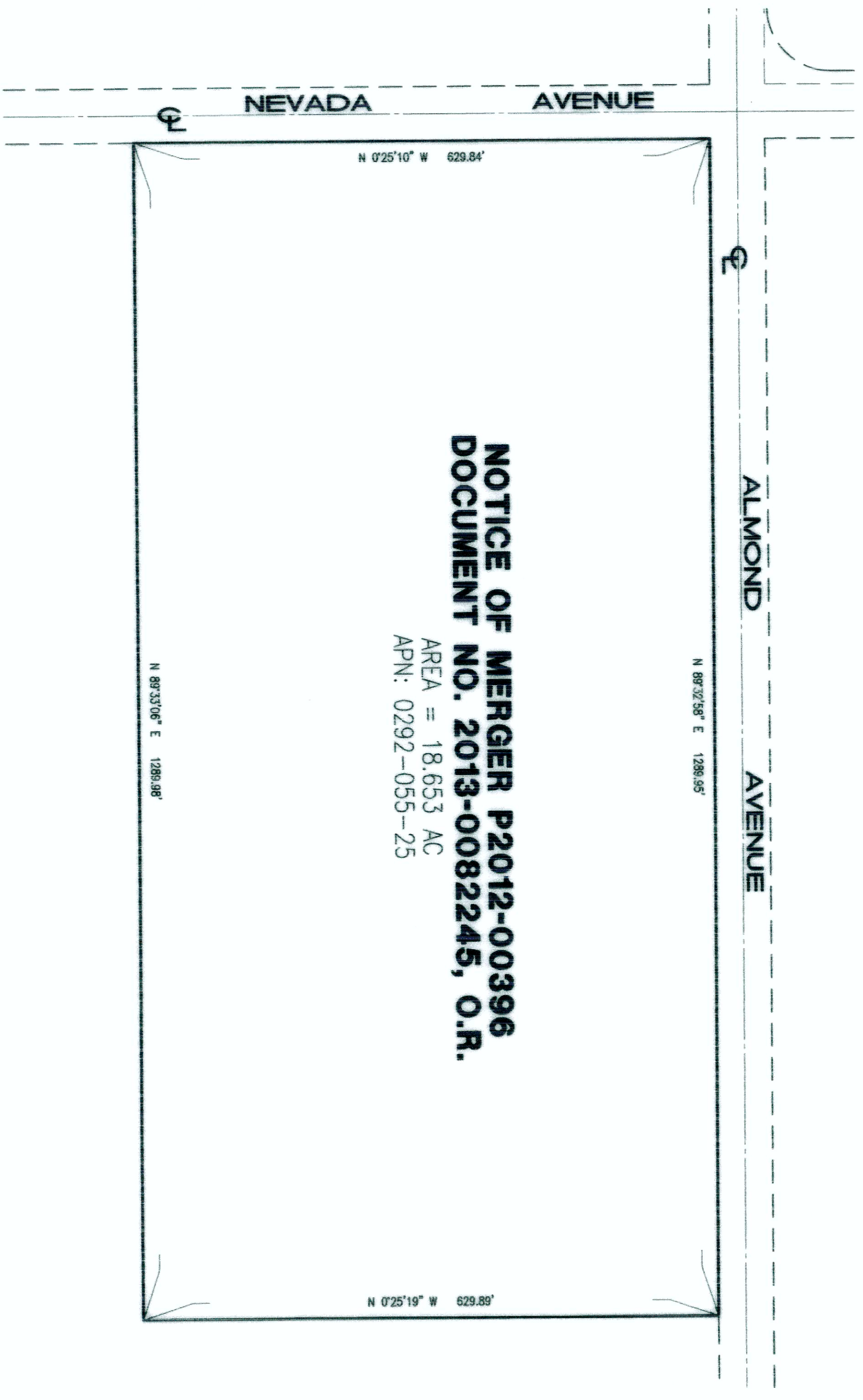
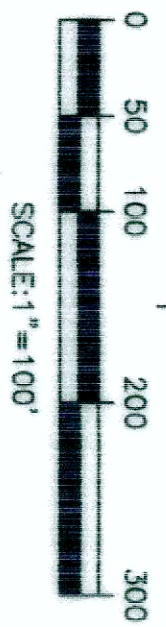
I HEREBY CERTIFY THAT THE WITHIN MAP SHOWING
THE PROPOSED BOUNDARIES OF ANNEXATION NO. 3
OF COUNTY OF SAN BERNARDINO COMMUNITY
FACILITIES DISTRICT NO. 2010-1 (EAST VALLEY), SAN
BERNARDINO COUNTY, STATE OF CALIFORNIA, WAS
APPROVED BY THE BOARD OF SUPERVISORS OF THE
COUNTY OF SAN BERNARDINO AT A REGULAR
MEETING THEREOF, HELD ON THE DAY OF March 26,
2013, BY ITS RESOLUTION NO. 2013-32.

Christy Wood
LAURA H. WELCH, CLERK OF THE BOARD
COUNTY OF SAN BERNARDINO

SURVEYOR:
PREPARED UNDER THE DIRECTION OF:

Brian L. Thienes
BRIAN L. THIENES
P.L.S. NO. 5750
REG. EXP. 12/31/13

2/28/13
DATE



**NOTICE OF MERGER P2012-00396
DOCUMENT NO. 2013-0082245, O.R.**

AREA = 18.653 AC
APN: 0292-055-25

LEGAL DESCRIPTION:

LAND DESCRIBED IN NOTICE OF MERGER
P201200396 RECORDED FEBRUARY 26, 2013
AS DOCUMENT NO. 2013-0082245, OF
OFFICIAL RECORDS IN THE OFFICE OF THE
RECORDER OF COUNTY OF SAN BERNARDINO,
DESCRIBED AS FOLLOWS:

- BEGINNING AT THE MOST NORTHWESTERLY
CORNER OF SAID PARCEL 1;
THENCE ALONG THE BOUNDARY OF SAID
PARCEL 1, THE FOLLOWING FOUR (4)
COURSES:
- 1) NORTH 89° 32' 58" EAST, 1289.98 FEET;
 - 2) SOUTH 00° 25' 19" EAST, 629.89 FEET;
 - 3) SOUTH 89° 33' 06" WEST, 1289.98 FEET;
 - 4) NORTH 00° 25' 10" WEST, 629.84 FEET
TO THE POINT OF BEGINNING.

San Bernardino County Recorder's Certificate

This map has been filed under Document
Number 2013-0410517, this 5th day of
April, 2013, at 3:24PM in Book 85
of Maps of Assessment and Community Facilities
Districts at Page(s) 64, at the Request of the
County of San Bernardino in the amount of
\$ 0.00.

Dennis Draeger
Assessor-Recorder-Clerk
County of San Bernardino

By: *Dennis Draeger*
Deputy Recorder

ASSESSOR'S PARCEL NUMBER WITHIN THE
BOUNDARIES OF ANNEXATION NO. 3,
CFD 2010-1:
0292-055-25
REFERENCE IS MADE TO THE ASSESSOR MAPS
OF THE COUNTY OF SAN BERNARDINO FOR A
DESCRIPTION OF THE LINES AND DIMENSIONS
OF THE LOT AND PARCEL, AND THE MAP OF
THE BOUNDARIES OF COUNTY OF SAN
BERNARDINO COMMUNITY FACILITIES DISTRICT
NO. 2010-1 (EAST VALLEY) RECORDED ON
JUNE 14, 2010, IN BOOK NO. 84 OF MAPS
OF ASSESSMENT AND COMMUNITY FACILITIES
DISTRICT AT PAGES 78-89, AND RECORDED
ON MARCH 29, 2012, IN BOOK NO. 85 OF
MAPS OF ASSESSMENT AND COMMUNITY
FACILITIES DISTRICT AT PAGE 29 AND
RECORDED ON APRIL 1, 2013, IN BOOK NO.
85 OF MAPS OF ASSESSMENT AND COMMUNITY
FACILITIES DISTRICT AT PAGE 62 IN THE
OFFICIAL RECORDS OF THE SAN BERNARDINO
COUNTY RECORDER, STATE OF CALIFORNIA.