



## Department of Public Works - Special Districts

# Wonder Valley Community Meeting Community Service Area 70 M

Glenn Jacklin, Division Manager  
Department of Public Works – Special Districts  
April 20, 2022



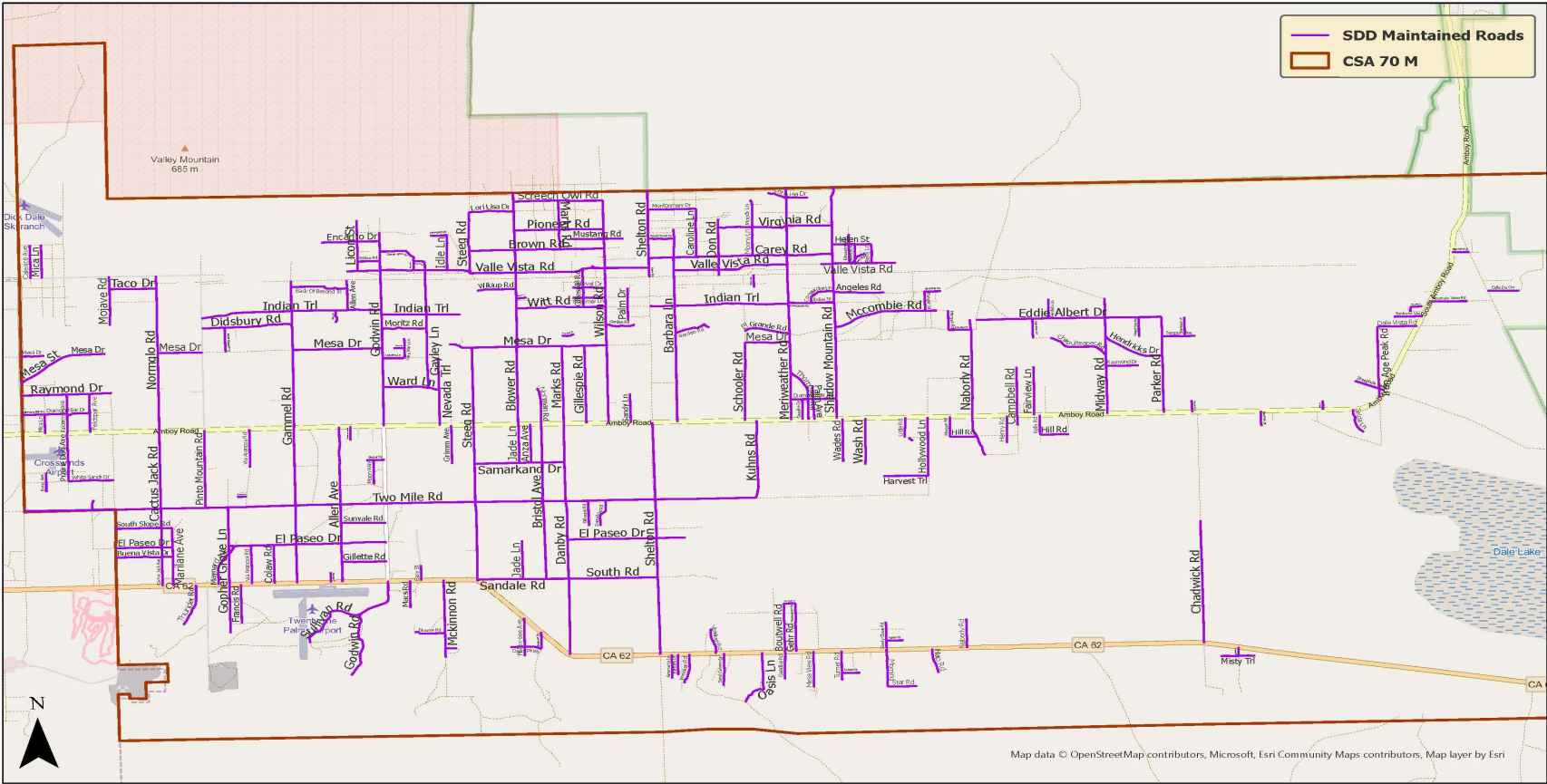
## History

- Formed August 1972 to provide Fire Protect & Road Maintenance Services
  - Vote of 95 Yes and 44 No.
- Annexation July 1990, increased district size by 41sq miles to 132sq miles.
  - Added Police Protection powers.
  - Transferred Recreation & Park Powers from 29 Palms to Wonder Valley.
- CSA 70 TV-4 established, July 1995.
- Reduction June 2008 of Fire, Ambulance and Disaster Preparedness Services.
  - Countywide initiative to form County Fire Protection District in all CSA 70's
- Formed August 2014 CSA 70 M Zone A provide additional Road Services
  - Purchase Grader and full-time Equipment Operator II.
  - Vote of 96 Yes and 43 No.



Services: Roads

- 178 Miles of dirt roads maintained by Special Districts





## Services: Roads

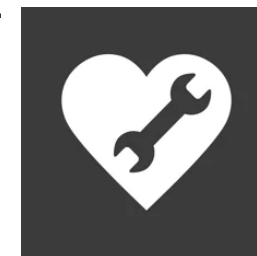
- Grading Frequency
  - Primary roads are graded every week to two weeks, conditions & weather dependent.
  - Secondary roads are graded every two to four weeks , conditions & weather dependent.
  - All other by need or if grader is in area.

### Primary Roads

Barbara Lane (3100-4900)  
 Blower Road (2500-4900)  
Godwin Rd. (2500-4900)  
 Eddie Albert (84800-86100)  
 Gammell Rd (3400-6500)  
 Meriweather ((2500-4900)  
Naborly (3900-5300)  
 Parker (3900 – 4900)  
 Pipeline Rd (78700-83700)  
 Shadow Mtn Rd (2500-4900)  
 Shelton Rd (4900-7300)  
 Star Lane (Pipeline) (78700-83700)

### Secondary Roads

Cactus Jack (4900-6500)  
 Brown Road (80300-81300)  
 Via Arenosa (4900-6500)  
 Eddie Albert (83800 – 84500)  
 Carey Rd (81300-83300)  
 El Paseo (77900-79300)  
Falderman (4500-4900)  
Indian Trl (77700-82900)  
 Mesa Dr (77300-82900)  
 Thompson Rd (4700-4900)  
 Two Mile Rd (76100-82500)  
 Steeg Rd (4800-6500)  
 Valle Vista (78800-83700)



## Reporting a Problem See Click Fix

- Phone App that allows users to report issues and have it directed to the correct department.
- Submit request through Website.
- Received over 38 requests from this District on See Click Fix



## Services: Recreation & Park Services

- Community User Groups
  - Dale Basin Well owners, Wonder Valley Forever (HX of WV), Bystanders Overdose Training.
  - USDA Food Distribution 3<sup>rd</sup> Tuesday or every month 10am – 12pm
- Special Districts Collaborations
  - CSA 20 Joshua Tree Park and Maintenance staff.
    - Park maintenance clean up.
  - CSA 70 Water & Sanitation Staff.
    - Well repair and Water Monitoring
- Community Center Programs
  - Art Glass Classes
  - Instructor Welcome
- Possible Grant Plans
  - Kitchen upgrade to Commercial
  - New Playground equipment
  - Flooring upgrade





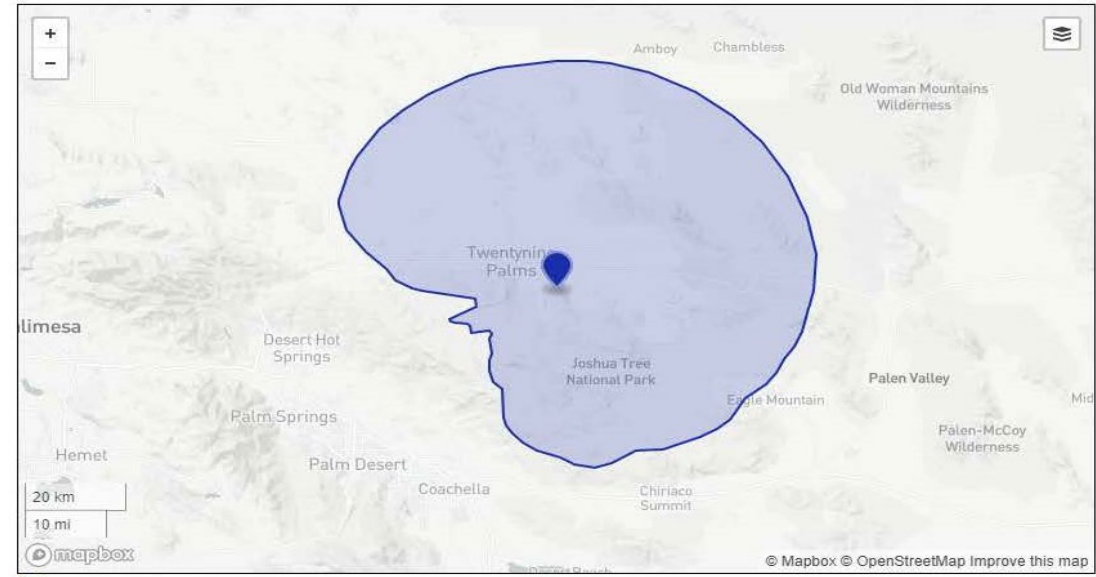
## Services: Water Loss Prevention

- Water theft Mitigation
  - Disconnected tanks and stored away
  - Decommissioned broken well.
  - Replaced Spickets
  - Put well on timer for irrigation only
  - Repaired access to building
  - Installed commercial locks



## Services: Television

- County Service Area 70 TV-4 was established on July 11, 1995, with a service charge of \$5 per parcel annually
- There are a total of 4,847 parcels within the District, which provides service to approximately 2,000 households.
- The TV Tower located on Pinto Mountain was originally designated to produce eight Ultra High Frequency (UHF) signals.
- Digital television allows televised information, i.e. emergency messages, to be sent more efficiently than older technology.
- 10 Channels broadcast out to WV residents
  - KCBS, KNBC, KTLA, KOCE PBS, KDOC, KABC, KCAL, KTTV, KCOP and METV.
- For Issues Contact (760) 367-1833 or  
<https://specialdistricts.sbcounty.gov/television-districts/tv-contact-us/>
  - TV Staff Clinton Tipton & John Medici





## Fiscal and Budgetary Status

- Current Service charges per Parcel
  - Road Maintenance Services \$15 per parcel on 4,603 parcels.
    - No inflationary factor included.
  - Park and Recreation Powers, \$10 per parcel on 4,603 parcels.
    - No Inflationary factor included.
  - Additional Road Services \$33 per parcel on 3,989 parcels.
    - Includes a 2.5% annual inflationary factor.
  - TV Services, \$5 per parcel on 4,847 parcels.
    - No Inflationary Factor included
- Services with ‘No Inflationary Factor’ may be subject to service disruptions in the future. Required for TV and Park districts for continued financial sustainability.



County of San Bernardino Public Works - Special Districts Wonder Valley 2021-22 Budget to Actual as of 4/14/22			
Commitment Items	Adopted Bdg	Actuals	Variance to Bdg
<b>100-Salaries &amp; Benefits</b>	<b>94,649</b>	<b>44,918</b>	<b>49,731</b>
52002176 STREET MAINTENANCE	30,000	20,391	9,609
52002186 UTILITIES	6,550	6,016	534
52002445 OTHER PROFESSIONAL & SPEC SVCS	35,000	5,787	29,213
52002448 COUNTY COUNSEL SERVICES	2,000	6,383	(4,383)
52002660 PENALTIES	0	55	(55)
52002835 GENERAL HOUSEHOLD EXPENSES	6,000	5,905	95
52002870 GEN MAINT-STRUCT,IMP & GROUNDS	2,000	4,314	(2,314)
55305030 OPERATING TRANSFERS OUT	0	0	0
55405010 SALARIES & BENE TRANFERS OUT	30,000	35,794	(5,794)
55405012 SERVS & SUPPLY TRANFERS OUT	23,517	17,597	5,920
52002930 MAINTENANCE CHARGES (ISF ONLY)	3,600	1,555	2,045
<b>200-Services &amp; Supplies-General</b>	<b>135,067</b>	<b>102,241</b>	<b>32,826</b>
<b>Expenditures</b>	<b>229,716</b>	<b>147,159</b>	<b>82,557</b>
40008145 INT & PEN DELINQUENT TAXES	12,500	28,147	(15,647)
40308500 INTEREST	4,000	1,060	2,940
40708155 SPECIAL ASSMNT ALL PRIOR YEARS	32,500	48,646	(16,146)
40708160 SP ASSMNT CUR YR TX ROLL GEN	200,000	156,484	43,516
40759680 FEE ORD-PERMIT & INSPECTION FEES	12,800	13,237	(437)
<b>Revenues</b>	<b>261,800</b>	<b>247,574</b>	<b>14,226</b>
<b>Net</b>	<b>32,084</b>	<b>100,415</b>	<b>(68,331)</b>



## Fiscal and Budgetary Status

- Issues with “No Inflationary Factor”
  - Road & Additional Road Services:
    - Will not be affected as district has an inflationary factor built in.
  - Park and Recreation Services.
    - Opening hours are already limited, replacement of equipment may not happen
  - TV Services.
    - Channels offered may be lessened, repairs may take longer
- Currently there are no plans to bring an inflationary item to the resident to vote on.



County of San Bernardino Public Works - Special Districts			
TV 4 - Wonder Valley			
2021-22 Budget to Actual as of 4/14/22			
Commitment Items	Adopted Bdg	Actuals	Variance to Bdg
52002188 UTILITIES	700	0	700
52002445 OTHER PROFESSIONAL & SPEC SVCS	600	3,628	(3,028)
52002448 COUNTY SERVICES	4,800	48	4,753
52002449 OUTSIDE LEGAL COUNSEL	600	3,628	(3,028)
52002835 GENERAL HOUSEHOLD EXPENSES			0
52002870 GEN MAINT-STRUCT,IMP & GROUNDS	4,000	22,506	(18,506)
55305030 OPERATING TRANSFERS OUT	87,500	0	87,500
55405010 SALARIES & BENE TRANFERS OUT	4,000	3,447	553
55405012 SERVS & SUPPLY TRANFERS OUT	2,403	1,468	935
<b>Expenditures</b>	<b>104,603</b>	<b>34,724</b>	<b>69,879</b>
40008145 INT & PEN DELINQUENT TAXES	1,400	3,062	(1,662)
40308500 INTEREST	4,700	1,510	3,190
40308525 RENTS & CONCESSIONS	19,500	0	19,500
40708155 SPECIAL ASSMNT ALL PRIOR YEARS	4,500	5,026	(526)
40708160 SP ASSMNT CUR YR TX ROLL GEN	20,000	14,807	5,193
40758525 FEE ORD-RENTS & CONCESSIONS	0	10,134	(10,134)
<b>Revenues</b>	<b>50,100</b>	<b>34,538</b>	<b>15,562</b>
<b>Net</b>	<b>54,503</b>	<b>186</b>	<b>54,317</b>

## Meet the Staff

- Glenn Jacklin: Division Manager – Operation
  - 222 West Hospitality Lane. 2<sup>nd</sup> Floor, San Bernardino
- Rudy Guerrero: Regional Manager – Roads
  - 222 West Hospitality Lane. 2<sup>nd</sup> Floor, San Bernardino
- Frank Haggard: Recreation Superintendent – JT, WV, TV, LV
  - 6171 Sunburst Ave, Joshua Tree
- Thomas Candeleria: Equipment Operator II
  - 80526 ½ Amboy road, 29 Palms.
- James Dunham: Community Center Coordinator
  - 80526 ½ Amboy road, 29 Palms.

Contact us at [info@sdd.sbcounty.gov](mailto:info@sdd.sbcounty.gov)

[www.specialdistricts.sbcounty.gov](http://www.specialdistricts.sbcounty.gov)

