

**COUNTY OF SAN BERNARDINO
COMMUNITY FACILITIES DISTRICT
No. 2006-1
(LYTLE CREEK NORTH)**

May 9, 2014

Public Finance
Public Private Partnerships
Urban Economics

Newport Beach
Fresno
Riverside
San Francisco
Chicago
Dallas

**ADMINISTRATION REPORT
FISCAL YEAR 2014-2015**

**COUNTY OF SAN BERNARDINO
COMMUNITY FACILITIES DISTRICT
No. 2006-1
(LYTLE CREEK NORTH)**

Prepared for

**COUNTY OF SAN BERNARDINO
157 W. Fifth Street
San Bernardino, California 92371**

Prepared by

**DAVID TAUSSIG & ASSOCIATES, INC.
5000 Birch Street, Suite 6000
Newport Beach, California 92660
(949) 955-1500**

Table of Contents

<i>Section</i>	<i>Page</i>
<i>I. Introduction</i>	1
<i>II. Special Tax Classifications and Development Update</i>	2
Special Tax Classifications	2
Development Update	2
<i>III. Fiscal Year 2013-2014 Special Tax Levy</i>	3
<i>IV. Fiscal Year 2014-2015 Special Tax Requirement</i>	4
<i>V. Method of Apportionment</i>	5
Maximum Special Tax Rates	5
Apportionment of Special Taxes	5

EXHIBITS

- Exhibit A: Boundary Map*
Exhibit B: Special Tax Roll Fiscal Year 2014-2015

I. Introduction

This report presents the findings of the research and financial analysis performed by David Taussig & Associates, Inc. to determine the special tax requirement for Community Facilities District No. 2006-1 (Lytle Creek North) ("CFD No. 2006-1") of the County of San Bernardino ("the County") for fiscal year 2014-2015.

CFD No. 2006-1 is a legally constituted governmental entity established under the Mello-Roos Community Facilities Act of 1982, (the "Act") as amended. The Act provides an alternative method for the financing of certain public facilities and services. Specifically, CFD No. 2006-1 is authorized to levy an annual special tax to finance fire protection services, the maintenance of open space and flood and storm drain protection services, and the maintenance of parks and parkways. At the time of formation, all property in CFD No. 2006-1 was included in either IA No. 1 or IA M. In 2010 and 2012, certain property within IA M was designated as IA No. 2 and IA No. 3. In 2014, certain property within IA M is expected to be designated as IA No. 4. A map showing the property in CFD No. 2006-1 is included in Exhibit A.

The authorized services are funded through the annual levy and collection of special taxes from all property subject to the tax within the community facilities district. In calculating the special tax liability for fiscal year 2014-2015, this report examines the financial obligations of the current fiscal year and analyzes the level of development within CFD No. 2006-1.

This report is organized into the following sections:

Section II

Section II provides an update of the development activity occurring within CFD No. 2006-1.

Section III

Section III analyzes the previous year's special tax levy.

Section IV

Section IV determines the financial obligations of CFD No. 2006-1 for fiscal year 2014-2015.

Section V

Section V reviews the methodology used to apportion the special tax requirement to Developed Property and Final Mapped Property. A table of the 2014-2015 special tax rates for Developed Property and Final Mapped Property is included.

II. Special Tax Classifications and Development Update

Special Tax Classifications

The methodology employed to calculate and apportion the special tax is contained in a document entitled the Rate and Method of Apportionment. The Rate and Method of Apportionment defines three primary categories of property, namely “Developed Property,” “Undeveloped Property,” and “Final Mapped Property”. Only Developed Property shall have the Special Tax A to pay for fire protection services levied against it. Only Developed Property and Final Mapped Property shall have the Special Tax B to pay for the maintenance of open space and flood and storm drain protection services levied against it. Only Developed Property shall have the Special Tax C to pay for the maintenance of parks and parkways.

Developed Property is distinguished from Undeveloped Property and Final Mapped Property by the issuance of a building permit. Specifically, property for which a building permit was issued between January 2, 2006 and March 1 of the prior Fiscal Year will be classified as Developed Property in the following fiscal year. For example, all property in CFD No. 2006-1 for which a building permit was issued between January 2, 2006 and March 1, 2014, will be classified as Developed Property in fiscal year 2014-2015.

Final Mapped Property is distinguished from Undeveloped Property by the recordation of a final map. Specifically, property for which a final map was recorded between January 2, 2006 and March 1 of the prior Fiscal Year and that is not classified as Developed Property will be classified as Final Mapped Property in the following fiscal year. For example, all property in CFD No. 2006-1 for which a final map was recorded between January 2, 2006 and March 1, 2014, and that is not classified as Developed Property, will be classified as Final Mapped Property in fiscal year 2014-2015.

Development Update

Review of the County of San Bernardino’s building permit records indicate that between January 2, 2006 and March 1, 2014 building permits for 819 units of residential property had been issued within CFD No. 2006-1. In addition, 12 tract maps were recorded as of March 1, 2014 and 67.35 acres are considered Final Mapped Property. A total of 146.46 acres in CFD No. 2006-1 are considered Undeveloped Property. The table below indicates the current amount of Developed Property, Final Mapped Property, and Undeveloped Property within CFD No. 2006-1.

Community Facility District No. 2006-1 Cumulative Developed Property, Final Mapped Property, and Undeveloped Property

Land Use	Improvement Area No. 1	Improvement Area No. 2	Improvement Area No. 3	Proposed Improvement Area No. 4	Remaining Improvement Area M	Total Number of Units/Acres
Developed Property	424 units	243 units	142 units	0 units	10 units	819 units
Final Mapped Property	20.93 acres	1.91 acres	25.43 acres	17.47 acres	1.61 acres	67.35 acres
Undeveloped Property	0.00 acres	0.00 acres	0.00 acres	33.49 acres	112.97 acres	146.46 acres

III. Fiscal Year 2013-2014 Special Tax Levy

1. Special Tax A

The total Special Tax A levy for fiscal year 2013-2014 equaled \$120,484. As of May 6, 2014, \$119,568 in special taxes due for fiscal year 2013-2014 had been collected by the County, resulting in a delinquency rate of approximately 0.76%. Of the 592 parcels that were subject to the special tax, five failed to pay some or all of their fiscal year 2013-2014 special taxes in a timely manner.

2. Special Tax B

The total Special Tax B levy for fiscal year 2013-2014 equaled \$31,358. As of May 6, 2014, \$31,120 in special taxes due for fiscal year 2013-2014 had been collected by the County, resulting in a delinquency rate of approximately 0.76%. Of the 592 parcels that were subject to the special tax, five failed to pay some or all of their fiscal year 2013-2014 special taxes in a timely manner.

IV. Fiscal Year 2014-2015 Special Tax Requirement

Pursuant to the Rate and Method of Apportionment, special taxes can be levied for the following three items: the Special Tax Requirement for Fire Protection, the Special Tax Requirement for Maintenance, and the Contingent Special Tax Requirement. Special Tax A is levied to pay for fire protection services that are authorized to be funded by CFD No. 2006-1. Special Tax B is levied to pay for the maintenance of open space and flood and storm drain protection services that are authorized to be funded by CFD No. 2006-1. Special Tax C is levied to pay for the maintenance of parks and parkways that are authorized to be funded by CFD No. 2006-1 through the Contingent Special Tax Requirement, but only if such services are not being provided by the property owner association.

According to the County, for fiscal year 2014-2015, the funds required from Special Tax A are equal to \$606,667, which exceed the maximum Special Tax A revenues that can be collected from Developed Property. Therefore, the Special Tax Requirement for Fire Protection is limited to \$170,016, the amount that can be collected through the levy of the maximum Special Tax A.

According to the County, for fiscal year 2014-2015, the funds required from Special Tax B are equal to \$44,251.

Special Tax C will not be levied for fiscal year 2014-2015.

V. Method of Apportionment

Maximum Special Tax Rates

The amount of special taxes that CFD No. 2006-1 may levy is strictly limited by the maximum rates set forth in Section C of the Rate and Method of Apportionment.

The fiscal year 2014-2015 maximum special tax rates for Developed property and Final Mapped Property are shown in the tables on the following page. Each July 1, the Maximum Special Tax A, Maximum Special Tax B, and Maximum Special Tax C shall be increased by the positive change in the Consumer Price Index of the amount in effect for the previous fiscal year, with a maximum annual increase of 4% and a minimum annual increase of 2% per fiscal year. As of January 1, 2014, the annual change in the Consumer Price Index was 1.14%. Therefore, an increase of 2.00% is applied.

Apportionment of Special Taxes

The special tax that is apportioned to each parcel is determined through the application of Section D of the Rate and Method of Apportionment. The Board of Supervisors shall first determine the Special Tax Requirement for Fire Protection, Special Tax Requirement for Maintenance, and Contingent Special Tax Requirement.

The Maximum Special Tax A shall be levied against each Assessor's Parcel of Developed Property at up to 100% of the applicable Maximum Special Tax A until the amount of the Special Taxes equals the Special Tax Requirement for Fire Protection. Application of the special tax generates Special Tax A revenues of \$170,016 from Developed Property, which is equal to the total fiscal year 2014-2015 Special Tax Requirement for Fire Protection.

The Maximum Special Tax B shall be levied against each Assessor's Parcel of Developed Property at up to 100% of the applicable Maximum Special Tax B until the amount of the Special Taxes equals the Special Tax Requirement for Maintenance. If additional monies are needed to satisfy the Special Tax Requirement for Maintenance, the Special Tax B shall be levied against each Assessor's Parcel of Final Mapped Property at up to 100% of the applicable Maximum Special Tax B. Application of the first step generates Special Tax B revenues of \$44,251 from Developed Property, which is equal to the Special Tax Requirement for Maintenance.

The Maximum Special Tax C shall be levied against each Assessor's Parcel of Developed Property at up to 100% of the applicable Maximum Special Tax C until the amount of the Special Taxes equals the Contingent Special Tax Requirement. The Contingent Special Tax Requirement is equal to \$0 and therefore the Special Tax C will not be levied for fiscal year 2014-2015.

The fiscal year 2014-2015 maximum and actual special tax rates are shown for Developed Property and Final Mapped Property in the following table. The Special Tax Roll, which lists the actual special tax levied against each parcel, is shown in Exhibit B.

**County of San Bernardino
 Fiscal Year 2014-2015
 Maximum and Actual Special Taxes
 Community Facilities District No. 2006-1**

Special Tax A

Land Use	FY 2014-2015 Maximum Special Tax A	FY 2014-2015 Actual Special Tax A
Residential Property	\$207.59 per unit	\$207.59 per unit
Non-Residential Property	\$1,318.56 per acre	\$0.00 per acre

Special Tax B

Land Use	FY 2014-2015 Maximum Special Tax B	FY 2014-2015 Actual Special Tax B
Residential Property	\$54.03 per unit	\$54.03 per unit
Non-Residential Property	\$343.17 per acre	\$0.00 per acre
Final Mapped Property	\$343.17 per acre	\$0.00 per acre

Special Tax C

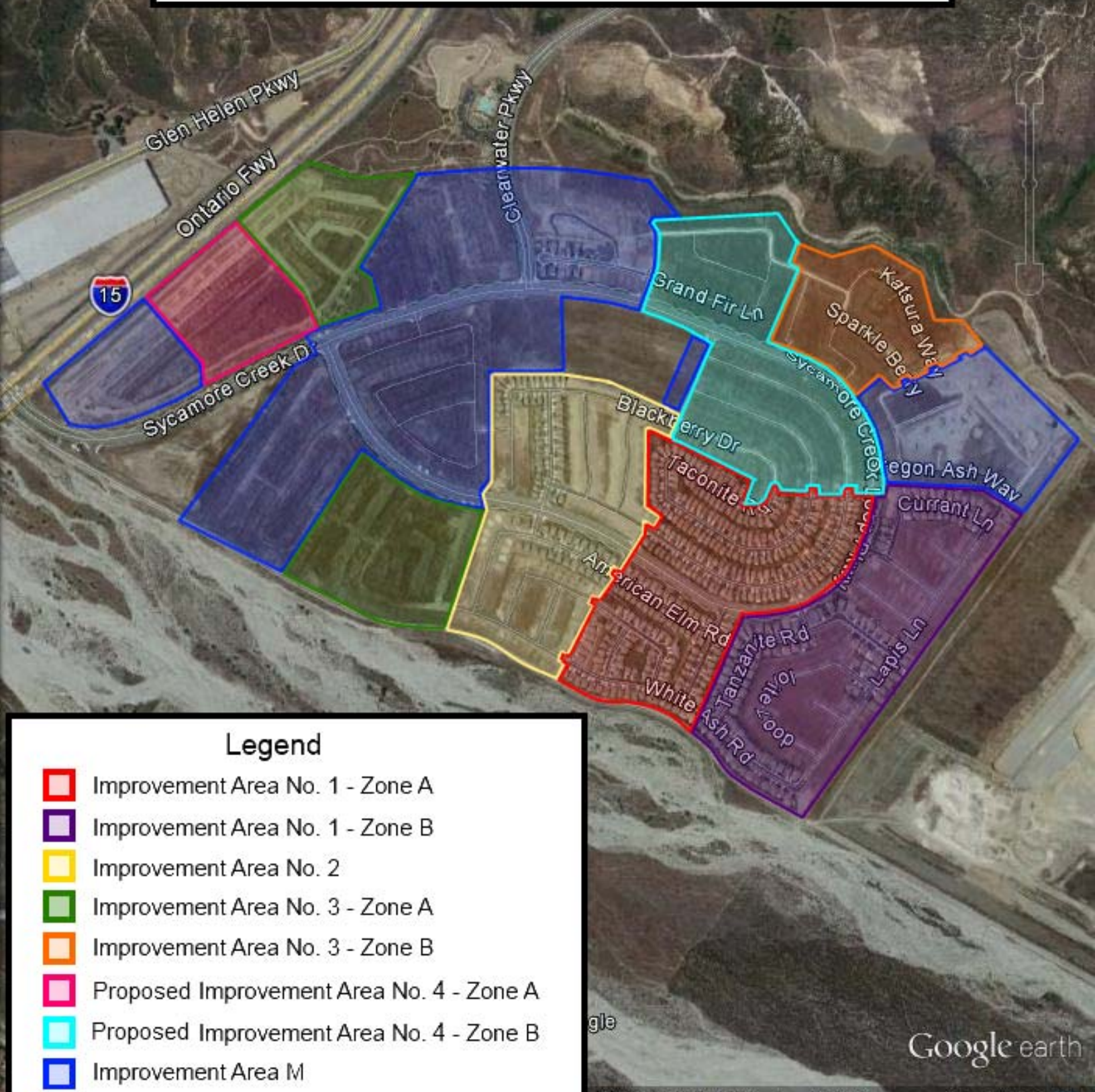
Land Use	FY 2014-2015 Maximum Special Tax A	FY 2014-2015 Actual Special Tax A
Residential Property	\$390.36 per unit	\$0.00 per unit
Non-Residential Property	\$2,479.55 per acre	\$0.00 per acre

EXHIBIT A

*County of San Bernardino
Community Facilities District No. 2006-1*

Boundary Map

County of San Bernardino
 Community Facilities District No. 2006-1
 (Lytle Creek North)
 Improvement Area M
 and Improvement Area Nos. 1, 2, 3, 4



Legend

	Improvement Area No. 1 - Zone A
	Improvement Area No. 1 - Zone B
	Improvement Area No. 2
	Improvement Area No. 3 - Zone A
	Improvement Area No. 3 - Zone B
	Proposed Improvement Area No. 4 - Zone A
	Proposed Improvement Area No. 4 - Zone B
	Improvement Area M

EXHIBIT B

*County of San Bernardino
Community Facilities District No. 2006-1*

*Special Tax Roll
Fiscal Year 2014-2015*

Exhibit B**County of San Bernardino CFD No. 2006-1
FY 2014-2015 Special Tax Levy**

<u>Assessor's Parcel Number</u>	<u>Special Tax A</u>	<u>Special Tax B</u>	<u>Special Tax C</u>
0239-202-01	\$207.59	\$54.03	\$0.00
0239-202-02	\$207.59	\$54.03	\$0.00
0239-202-03	\$207.59	\$54.03	\$0.00
0239-202-04	\$207.59	\$54.03	\$0.00
0239-202-05	\$207.59	\$54.03	\$0.00
0239-202-06	\$207.59	\$54.03	\$0.00
0239-202-07	\$207.59	\$54.03	\$0.00
0239-202-08	\$207.59	\$54.03	\$0.00
0239-202-09	\$207.59	\$54.03	\$0.00
0239-202-10	\$207.59	\$54.03	\$0.00
0239-202-11	\$207.59	\$54.03	\$0.00
0239-202-12	\$207.59	\$54.03	\$0.00
0239-202-13	\$207.59	\$54.03	\$0.00
0239-202-14	\$207.59	\$54.03	\$0.00
0239-202-15	\$207.59	\$54.03	\$0.00
0239-202-16	\$207.59	\$54.03	\$0.00
0239-202-17	\$207.59	\$54.03	\$0.00
0239-202-18	\$207.59	\$54.03	\$0.00
0239-202-19	\$207.59	\$54.03	\$0.00
0239-202-20	\$207.59	\$54.03	\$0.00
0239-202-21	\$207.59	\$54.03	\$0.00
0239-202-22	\$207.59	\$54.03	\$0.00
0239-202-23	\$207.59	\$54.03	\$0.00
0239-202-24	\$207.59	\$54.03	\$0.00
0239-202-25	\$207.59	\$54.03	\$0.00
0239-202-26	\$207.59	\$54.03	\$0.00
0239-202-27	\$207.59	\$54.03	\$0.00
0239-202-28	\$207.59	\$54.03	\$0.00
0239-202-29	\$207.59	\$54.03	\$0.00
0239-202-30	\$207.59	\$54.03	\$0.00
0239-202-31	\$207.59	\$54.03	\$0.00
0239-202-32	\$207.59	\$54.03	\$0.00
0239-202-33	\$207.59	\$54.03	\$0.00
0239-202-34	\$207.59	\$54.03	\$0.00
0239-202-35	\$207.59	\$54.03	\$0.00
0239-202-36	\$207.59	\$54.03	\$0.00
0239-202-37	\$207.59	\$54.03	\$0.00
0239-202-38	\$207.59	\$54.03	\$0.00
0239-202-39	\$207.59	\$54.03	\$0.00

Exhibit B**County of San Bernardino CFD No. 2006-1
FY 2014-2015 Special Tax Levy**

<u>Assessor's Parcel Number</u>	<u>Special Tax A</u>	<u>Special Tax B</u>	<u>Special Tax C</u>
0239-202-40	\$207.59	\$54.03	\$0.00
0239-202-41	\$207.59	\$54.03	\$0.00
0239-202-42	\$207.59	\$54.03	\$0.00
0239-202-43	\$207.59	\$54.03	\$0.00
0239-202-44	\$207.59	\$54.03	\$0.00
0239-202-45	\$207.59	\$54.03	\$0.00
0239-212-01	\$207.59	\$54.03	\$0.00
0239-212-02	\$207.59	\$54.03	\$0.00
0239-212-03	\$207.59	\$54.03	\$0.00
0239-212-04	\$207.59	\$54.03	\$0.00
0239-212-05	\$207.59	\$54.03	\$0.00
0239-212-06	\$207.59	\$54.03	\$0.00
0239-212-07	\$207.59	\$54.03	\$0.00
0239-212-08	\$207.59	\$54.03	\$0.00
0239-212-09	\$207.59	\$54.03	\$0.00
0239-212-10	\$207.59	\$54.03	\$0.00
0239-212-11	\$207.59	\$54.03	\$0.00
0239-212-12	\$207.59	\$54.03	\$0.00
0239-212-13	\$207.59	\$54.03	\$0.00
0239-212-14	\$207.59	\$54.03	\$0.00
0239-212-15	\$207.59	\$54.03	\$0.00
0239-212-16	\$207.59	\$54.03	\$0.00
0239-212-17	\$207.59	\$54.03	\$0.00
0239-212-18	\$207.59	\$54.03	\$0.00
0239-212-19	\$207.59	\$54.03	\$0.00
0239-212-20	\$207.59	\$54.03	\$0.00
0239-212-21	\$207.59	\$54.03	\$0.00
0239-212-22	\$207.59	\$54.03	\$0.00
0239-212-23	\$207.59	\$54.03	\$0.00
0239-212-24	\$207.59	\$54.03	\$0.00
0239-212-25	\$207.59	\$54.03	\$0.00
0239-212-26	\$207.59	\$54.03	\$0.00
0239-212-27	\$207.59	\$54.03	\$0.00
0239-212-28	\$207.59	\$54.03	\$0.00
0239-212-29	\$207.59	\$54.03	\$0.00
0239-212-30	\$207.59	\$54.03	\$0.00
0239-212-31	\$207.59	\$54.03	\$0.00
0239-212-32	\$207.59	\$54.03	\$0.00
0239-212-33	\$207.59	\$54.03	\$0.00

Exhibit B**County of San Bernardino CFD No. 2006-1
FY 2014-2015 Special Tax Levy**

<u>Assessor's Parcel Number</u>	<u>Special Tax A</u>	<u>Special Tax B</u>	<u>Special Tax C</u>
0239-212-34	\$207.59	\$54.03	\$0.00
0239-212-35	\$207.59	\$54.03	\$0.00
0239-212-36	\$207.59	\$54.03	\$0.00
0239-212-37	\$207.59	\$54.03	\$0.00
0239-212-38	\$207.59	\$54.03	\$0.00
0239-212-39	\$207.59	\$54.03	\$0.00
0239-212-40	\$207.59	\$54.03	\$0.00
0239-212-41	\$207.59	\$54.03	\$0.00
0239-212-42	\$207.59	\$54.03	\$0.00
0239-212-43	\$207.59	\$54.03	\$0.00
0239-212-44	\$207.59	\$54.03	\$0.00
0239-212-45	\$207.59	\$54.03	\$0.00
0239-212-46	\$207.59	\$54.03	\$0.00
0239-212-47	\$207.59	\$54.03	\$0.00
0239-212-48	\$207.59	\$54.03	\$0.00
0239-212-49	\$207.59	\$54.03	\$0.00
0239-212-50	\$207.59	\$54.03	\$0.00
0239-212-51	\$207.59	\$54.03	\$0.00
0239-212-52	\$207.59	\$54.03	\$0.00
0239-212-53	\$207.59	\$54.03	\$0.00
0239-212-54	\$207.59	\$54.03	\$0.00
0239-212-55	\$207.59	\$54.03	\$0.00
0239-212-56	\$207.59	\$54.03	\$0.00
0239-222-01	\$207.59	\$54.03	\$0.00
0239-222-02	\$207.59	\$54.03	\$0.00
0239-222-03	\$207.59	\$54.03	\$0.00
0239-222-04	\$207.59	\$54.03	\$0.00
0239-222-05	\$207.59	\$54.03	\$0.00
0239-222-06	\$207.59	\$54.03	\$0.00
0239-222-07	\$207.59	\$54.03	\$0.00
0239-222-08	\$207.59	\$54.03	\$0.00
0239-222-09	\$207.59	\$54.03	\$0.00
0239-222-10	\$207.59	\$54.03	\$0.00
0239-222-11	\$207.59	\$54.03	\$0.00
0239-222-12	\$207.59	\$54.03	\$0.00
0239-222-13	\$207.59	\$54.03	\$0.00
0239-222-14	\$207.59	\$54.03	\$0.00
0239-222-15	\$207.59	\$54.03	\$0.00
0239-222-16	\$207.59	\$54.03	\$0.00

Exhibit B**County of San Bernardino CFD No. 2006-1
FY 2014-2015 Special Tax Levy**

<u>Assessor's Parcel Number</u>	<u>Special Tax A</u>	<u>Special Tax B</u>	<u>Special Tax C</u>
0239-222-17	\$207.59	\$54.03	\$0.00
0239-222-18	\$207.59	\$54.03	\$0.00
0239-222-19	\$207.59	\$54.03	\$0.00
0239-222-20	\$207.59	\$54.03	\$0.00
0239-222-21	\$207.59	\$54.03	\$0.00
0239-222-22	\$207.59	\$54.03	\$0.00
0239-222-23	\$207.59	\$54.03	\$0.00
0239-222-24	\$207.59	\$54.03	\$0.00
0239-222-25	\$207.59	\$54.03	\$0.00
0239-222-26	\$207.59	\$54.03	\$0.00
0239-222-27	\$207.59	\$54.03	\$0.00
0239-222-28	\$207.59	\$54.03	\$0.00
0239-222-29	\$207.59	\$54.03	\$0.00
0239-222-30	\$207.59	\$54.03	\$0.00
0239-222-31	\$207.59	\$54.03	\$0.00
0239-222-32	\$207.59	\$54.03	\$0.00
0239-222-33	\$207.59	\$54.03	\$0.00
0239-222-34	\$207.59	\$54.03	\$0.00
0239-222-35	\$207.59	\$54.03	\$0.00
0239-222-36	\$207.59	\$54.03	\$0.00
0239-222-37	\$207.59	\$54.03	\$0.00
0239-222-38	\$207.59	\$54.03	\$0.00
0239-222-39	\$207.59	\$54.03	\$0.00
0239-222-40	\$207.59	\$54.03	\$0.00
0239-222-41	\$207.59	\$54.03	\$0.00
0239-222-42	\$207.59	\$54.03	\$0.00
0239-222-52	\$207.59	\$54.03	\$0.00
0239-222-53	\$207.59	\$54.03	\$0.00
0239-222-54	\$207.59	\$54.03	\$0.00
0239-222-55	\$207.59	\$54.03	\$0.00
0239-222-56	\$207.59	\$54.03	\$0.00
0239-222-57	\$207.59	\$54.03	\$0.00
0239-222-58	\$207.59	\$54.03	\$0.00
0239-222-59	\$207.59	\$54.03	\$0.00
0239-222-60	\$207.59	\$54.03	\$0.00
0239-222-61	\$207.59	\$54.03	\$0.00
0239-222-62	\$207.59	\$54.03	\$0.00
0239-222-63	\$207.59	\$54.03	\$0.00
0239-222-64	\$207.59	\$54.03	\$0.00

Exhibit B**County of San Bernardino CFD No. 2006-1
FY 2014-2015 Special Tax Levy**

<u>Assessor's Parcel Number</u>	<u>Special Tax A</u>	<u>Special Tax B</u>	<u>Special Tax C</u>
0239-222-65	\$207.59	\$54.03	\$0.00
0239-222-66	\$207.59	\$54.03	\$0.00
0239-222-73	\$207.59	\$54.03	\$0.00
0239-222-74	\$207.59	\$54.03	\$0.00
0239-222-75	\$207.59	\$54.03	\$0.00
0239-222-76	\$207.59	\$54.03	\$0.00
0239-222-77	\$207.59	\$54.03	\$0.00
0239-222-78	\$207.59	\$54.03	\$0.00
0239-222-79	\$207.59	\$54.03	\$0.00
0239-222-80	\$207.59	\$54.03	\$0.00
0239-222-81	\$207.59	\$54.03	\$0.00
0239-222-82	\$207.59	\$54.03	\$0.00
0239-222-83	\$207.59	\$54.03	\$0.00
0239-222-84	\$207.59	\$54.03	\$0.00
0239-222-85	\$207.59	\$54.03	\$0.00
0239-222-86	\$207.59	\$54.03	\$0.00
0239-222-87	\$207.59	\$54.03	\$0.00
0239-231-19	\$207.59	\$54.03	\$0.00
0239-231-20	\$207.59	\$54.03	\$0.00
0239-231-21	\$207.59	\$54.03	\$0.00
0239-231-22	\$207.59	\$54.03	\$0.00
0239-231-24	\$207.59	\$54.03	\$0.00
0239-231-25	\$207.59	\$54.03	\$0.00
0239-231-26	\$207.59	\$54.03	\$0.00
0239-231-27	\$207.59	\$54.03	\$0.00
0239-231-29	\$207.59	\$54.03	\$0.00
0239-231-30	\$207.59	\$54.03	\$0.00
0239-264-01	\$207.59	\$54.03	\$0.00
0239-264-02	\$207.59	\$54.03	\$0.00
0239-264-03	\$207.59	\$54.03	\$0.00
0239-264-04	\$207.59	\$54.03	\$0.00
0239-264-05	\$207.59	\$54.03	\$0.00
0239-264-07	\$207.59	\$54.03	\$0.00
0239-264-08	\$207.59	\$54.03	\$0.00
0239-264-12	\$207.59	\$54.03	\$0.00
0239-264-13	\$207.59	\$54.03	\$0.00
0239-264-14	\$207.59	\$54.03	\$0.00
0239-264-15	\$207.59	\$54.03	\$0.00
0239-264-16	\$207.59	\$54.03	\$0.00

Exhibit B**County of San Bernardino CFD No. 2006-1
FY 2014-2015 Special Tax Levy**

<u>Assessor's Parcel Number</u>	<u>Special Tax A</u>	<u>Special Tax B</u>	<u>Special Tax C</u>
0239-264-23	\$207.59	\$54.03	\$0.00
0239-264-24	\$207.59	\$54.03	\$0.00
0239-264-25	\$207.59	\$54.03	\$0.00
0239-264-26	\$207.59	\$54.03	\$0.00
0239-264-27	\$207.59	\$54.03	\$0.00
0239-264-28	\$207.59	\$54.03	\$0.00
0239-264-29	\$207.59	\$54.03	\$0.00
0239-264-30	\$207.59	\$54.03	\$0.00
0239-264-31	\$207.59	\$54.03	\$0.00
0239-264-32	\$207.59	\$54.03	\$0.00
0239-264-33	\$207.59	\$54.03	\$0.00
0239-264-34	\$207.59	\$54.03	\$0.00
0239-264-35	\$207.59	\$54.03	\$0.00
0239-264-36	\$207.59	\$54.03	\$0.00
0239-264-37	\$207.59	\$54.03	\$0.00
0239-264-38	\$207.59	\$54.03	\$0.00
0239-264-39	\$207.59	\$54.03	\$0.00
0239-275-01	\$207.59	\$54.03	\$0.00
0239-275-02	\$207.59	\$54.03	\$0.00
0239-275-03	\$207.59	\$54.03	\$0.00
0239-275-04	\$207.59	\$54.03	\$0.00
0239-275-05	\$207.59	\$54.03	\$0.00
0239-275-06	\$207.59	\$54.03	\$0.00
0239-275-07	\$207.59	\$54.03	\$0.00
0239-275-08	\$207.59	\$54.03	\$0.00
0239-275-09	\$207.59	\$54.03	\$0.00
0239-275-10	\$207.59	\$54.03	\$0.00
0239-275-11	\$207.59	\$54.03	\$0.00
0239-275-12	\$207.59	\$54.03	\$0.00
0239-275-13	\$207.59	\$54.03	\$0.00
0239-275-14	\$207.59	\$54.03	\$0.00
0239-275-15	\$207.59	\$54.03	\$0.00
0239-275-16	\$207.59	\$54.03	\$0.00
0239-275-17	\$207.59	\$54.03	\$0.00
0239-275-18	\$207.59	\$54.03	\$0.00
0239-275-19	\$207.59	\$54.03	\$0.00
0239-275-20	\$207.59	\$54.03	\$0.00
0239-275-21	\$207.59	\$54.03	\$0.00
0239-275-22	\$207.59	\$54.03	\$0.00

Exhibit B**County of San Bernardino CFD No. 2006-1
FY 2014-2015 Special Tax Levy**

<u>Assessor's Parcel Number</u>	<u>Special Tax A</u>	<u>Special Tax B</u>	<u>Special Tax C</u>
0239-275-23	\$207.59	\$54.03	\$0.00
0239-275-24	\$207.59	\$54.03	\$0.00
0239-275-25	\$207.59	\$54.03	\$0.00
0239-275-26	\$207.59	\$54.03	\$0.00
0239-275-27	\$207.59	\$54.03	\$0.00
0239-275-28	\$207.59	\$54.03	\$0.00
0239-275-29	\$207.59	\$54.03	\$0.00
0239-275-30	\$207.59	\$54.03	\$0.00
0239-275-31	\$207.59	\$54.03	\$0.00
0239-275-32	\$207.59	\$54.03	\$0.00
0239-275-33	\$207.59	\$54.03	\$0.00
0239-275-34	\$207.59	\$54.03	\$0.00
0239-275-35	\$207.59	\$54.03	\$0.00
0239-275-36	\$207.59	\$54.03	\$0.00
0239-275-42	\$207.59	\$54.03	\$0.00
0239-275-43	\$207.59	\$54.03	\$0.00
0239-275-44	\$207.59	\$54.03	\$0.00
0239-275-45	\$207.59	\$54.03	\$0.00
0239-275-46	\$207.59	\$54.03	\$0.00
0239-275-47	\$207.59	\$54.03	\$0.00
0239-275-48	\$207.59	\$54.03	\$0.00
0239-275-49	\$207.59	\$54.03	\$0.00
0239-275-50	\$207.59	\$54.03	\$0.00
0239-275-51	\$207.59	\$54.03	\$0.00
0239-275-52	\$207.59	\$54.03	\$0.00
0239-275-53	\$207.59	\$54.03	\$0.00
0239-275-54	\$207.59	\$54.03	\$0.00
0239-742-06	\$207.59	\$54.03	\$0.00
0239-742-07	\$207.59	\$54.03	\$0.00
0239-742-08	\$207.59	\$54.03	\$0.00
0239-742-09	\$207.59	\$54.03	\$0.00
0239-742-10	\$207.59	\$54.03	\$0.00
0239-742-11	\$207.59	\$54.03	\$0.00
0239-742-12	\$207.59	\$54.03	\$0.00
0239-742-13	\$207.59	\$54.03	\$0.00
0239-742-14	\$207.59	\$54.03	\$0.00
0239-742-15	\$207.59	\$54.03	\$0.00
0239-742-16	\$207.59	\$54.03	\$0.00
0239-742-17	\$207.59	\$54.03	\$0.00

Exhibit B**County of San Bernardino CFD No. 2006-1
FY 2014-2015 Special Tax Levy**

<u>Assessor's Parcel Number</u>	<u>Special Tax A</u>	<u>Special Tax B</u>	<u>Special Tax C</u>
0239-742-18	\$207.59	\$54.03	\$0.00
0239-742-23	\$207.59	\$54.03	\$0.00
0239-742-24	\$207.59	\$54.03	\$0.00
0239-742-25	\$207.59	\$54.03	\$0.00
0239-742-26	\$207.59	\$54.03	\$0.00
0239-742-27	\$207.59	\$54.03	\$0.00
0239-742-28	\$207.59	\$54.03	\$0.00
0239-742-29	\$207.59	\$54.03	\$0.00
0239-742-30	\$207.59	\$54.03	\$0.00
0239-742-31	\$207.59	\$54.03	\$0.00
0239-742-32	\$207.59	\$54.03	\$0.00
0239-742-37	\$207.59	\$54.03	\$0.00
0239-742-38	\$207.59	\$54.03	\$0.00
0239-742-39	\$207.59	\$54.03	\$0.00
0239-742-40	\$207.59	\$54.03	\$0.00
0239-742-41	\$207.59	\$54.03	\$0.00
0239-742-42	\$207.59	\$54.03	\$0.00
0239-742-43	\$207.59	\$54.03	\$0.00
0239-742-44	\$207.59	\$54.03	\$0.00
0239-752-25	\$207.59	\$54.03	\$0.00
0239-752-26	\$207.59	\$54.03	\$0.00
0239-752-27	\$207.59	\$54.03	\$0.00
0239-752-28	\$207.59	\$54.03	\$0.00
0239-752-29	\$207.59	\$54.03	\$0.00
0239-752-30	\$207.59	\$54.03	\$0.00
0239-752-31	\$207.59	\$54.03	\$0.00
0239-752-32	\$207.59	\$54.03	\$0.00
0239-752-33	\$207.59	\$54.03	\$0.00
0239-752-34	\$207.59	\$54.03	\$0.00
0239-752-35	\$207.59	\$54.03	\$0.00
0239-752-36	\$207.59	\$54.03	\$0.00
0239-752-37	\$207.59	\$54.03	\$0.00
0239-752-38	\$207.59	\$54.03	\$0.00
0239-752-39	\$207.59	\$54.03	\$0.00
0239-752-40	\$207.59	\$54.03	\$0.00
0239-752-41	\$207.59	\$54.03	\$0.00
0239-752-42	\$207.59	\$54.03	\$0.00
0239-752-43	\$207.59	\$54.03	\$0.00
0239-752-44	\$207.59	\$54.03	\$0.00

Exhibit B**County of San Bernardino CFD No. 2006-1
FY 2014-2015 Special Tax Levy**

<u>Assessor's Parcel Number</u>	<u>Special Tax A</u>	<u>Special Tax B</u>	<u>Special Tax C</u>
0239-752-45	\$207.59	\$54.03	\$0.00
0239-752-46	\$207.59	\$54.03	\$0.00
0239-752-47	\$207.59	\$54.03	\$0.00
0239-752-48	\$207.59	\$54.03	\$0.00
0239-752-49	\$207.59	\$54.03	\$0.00
0239-762-07	\$207.59	\$54.03	\$0.00
0239-762-08	\$207.59	\$54.03	\$0.00
0239-762-37	\$207.59	\$54.03	\$0.00
0239-762-38	\$207.59	\$54.03	\$0.00
0239-773-01	\$207.59	\$54.03	\$0.00
0239-773-02	\$207.59	\$54.03	\$0.00
0239-773-38	\$207.59	\$54.03	\$0.00
0239-773-39	\$207.59	\$54.03	\$0.00
0239-882-01	\$207.59	\$54.03	\$0.00
0239-882-02	\$207.59	\$54.03	\$0.00
0239-883-01	\$207.59	\$54.03	\$0.00
0239-883-02	\$207.59	\$54.03	\$0.00
0239-883-03	\$207.59	\$54.03	\$0.00
0239-883-04	\$207.59	\$54.03	\$0.00
0239-883-05	\$207.59	\$54.03	\$0.00
0239-883-09	\$207.59	\$54.03	\$0.00
0239-883-10	\$207.59	\$54.03	\$0.00
0239-883-11	\$207.59	\$54.03	\$0.00
0239-883-12	\$207.59	\$54.03	\$0.00
0239-883-13	\$207.59	\$54.03	\$0.00
0239-883-14	\$207.59	\$54.03	\$0.00
0239-883-15	\$207.59	\$54.03	\$0.00
0239-883-16	\$207.59	\$54.03	\$0.00
0239-883-17	\$207.59	\$54.03	\$0.00
0239-883-18	\$207.59	\$54.03	\$0.00
0239-883-19	\$207.59	\$54.03	\$0.00
0239-883-20	\$207.59	\$54.03	\$0.00
0239-883-21	\$207.59	\$54.03	\$0.00
0239-883-22	\$207.59	\$54.03	\$0.00
0239-883-23	\$207.59	\$54.03	\$0.00
0239-883-24	\$207.59	\$54.03	\$0.00
0239-883-25	\$207.59	\$54.03	\$0.00
0239-883-26	\$207.59	\$54.03	\$0.00
0239-883-27	\$207.59	\$54.03	\$0.00

Exhibit B**County of San Bernardino CFD No. 2006-1
FY 2014-2015 Special Tax Levy**

<u>Assessor's Parcel Number</u>	<u>Special Tax A</u>	<u>Special Tax B</u>	<u>Special Tax C</u>
0239-883-28	\$207.59	\$54.03	\$0.00
0239-883-29	\$207.59	\$54.03	\$0.00
0239-883-30	\$207.59	\$54.03	\$0.00
0239-883-31	\$207.59	\$54.03	\$0.00
0239-883-32	\$207.59	\$54.03	\$0.00
0239-883-57	\$207.59	\$54.03	\$0.00
0239-883-58	\$207.59	\$54.03	\$0.00
0239-883-59	\$207.59	\$54.03	\$0.00
0239-884-01	\$207.59	\$54.03	\$0.00
0239-884-02	\$207.59	\$54.03	\$0.00
0239-884-03	\$207.59	\$54.03	\$0.00
0239-884-04	\$207.59	\$54.03	\$0.00
0239-884-05	\$207.59	\$54.03	\$0.00
0239-884-06	\$207.59	\$54.03	\$0.00
0239-884-07	\$207.59	\$54.03	\$0.00
0239-884-08	\$207.59	\$54.03	\$0.00
0239-884-09	\$207.59	\$54.03	\$0.00
0239-884-10	\$207.59	\$54.03	\$0.00
0239-884-11	\$207.59	\$54.03	\$0.00
0239-884-12	\$207.59	\$54.03	\$0.00
0239-884-13	\$207.59	\$54.03	\$0.00
0239-884-14	\$207.59	\$54.03	\$0.00
0239-884-15	\$207.59	\$54.03	\$0.00
0239-884-16	\$207.59	\$54.03	\$0.00
0239-884-17	\$207.59	\$54.03	\$0.00
0239-884-18	\$207.59	\$54.03	\$0.00
0239-884-19	\$207.59	\$54.03	\$0.00
0239-884-20	\$207.59	\$54.03	\$0.00
0239-884-21	\$207.59	\$54.03	\$0.00
0239-884-22	\$207.59	\$54.03	\$0.00
0239-884-23	\$207.59	\$54.03	\$0.00
0239-884-24	\$207.59	\$54.03	\$0.00
0239-884-25	\$207.59	\$54.03	\$0.00
0239-884-26	\$207.59	\$54.03	\$0.00
0239-884-27	\$207.59	\$54.03	\$0.00
0239-884-28	\$207.59	\$54.03	\$0.00
0239-884-29	\$207.59	\$54.03	\$0.00
0239-884-30	\$207.59	\$54.03	\$0.00
0239-884-31	\$207.59	\$54.03	\$0.00

Exhibit B**County of San Bernardino CFD No. 2006-1
FY 2014-2015 Special Tax Levy**

<u>Assessor's Parcel Number</u>	<u>Special Tax A</u>	<u>Special Tax B</u>	<u>Special Tax C</u>
0239-884-32	\$207.59	\$54.03	\$0.00
0239-884-33	\$207.59	\$54.03	\$0.00
0239-884-34	\$207.59	\$54.03	\$0.00
0239-884-35	\$207.59	\$54.03	\$0.00
0239-884-36	\$207.59	\$54.03	\$0.00
0239-884-37	\$207.59	\$54.03	\$0.00
0239-884-38	\$207.59	\$54.03	\$0.00
0239-884-39	\$207.59	\$54.03	\$0.00
0239-884-40	\$207.59	\$54.03	\$0.00
0239-884-41	\$207.59	\$54.03	\$0.00
0239-884-42	\$207.59	\$54.03	\$0.00
0239-884-43	\$207.59	\$54.03	\$0.00
0239-884-44	\$207.59	\$54.03	\$0.00
0239-884-45	\$207.59	\$54.03	\$0.00
0239-884-46	\$207.59	\$54.03	\$0.00
0239-884-47	\$207.59	\$54.03	\$0.00
0239-884-48	\$207.59	\$54.03	\$0.00
0239-884-49	\$207.59	\$54.03	\$0.00
0239-884-50	\$207.59	\$54.03	\$0.00
0239-884-51	\$207.59	\$54.03	\$0.00
0239-884-52	\$207.59	\$54.03	\$0.00
0239-884-53	\$207.59	\$54.03	\$0.00
0239-884-54	\$207.59	\$54.03	\$0.00
0239-884-55	\$207.59	\$54.03	\$0.00
0239-884-56	\$207.59	\$54.03	\$0.00
0239-884-57	\$207.59	\$54.03	\$0.00
0239-884-58	\$207.59	\$54.03	\$0.00
0239-884-59	\$207.59	\$54.03	\$0.00
0239-885-01	\$207.59	\$54.03	\$0.00
0239-885-02	\$207.59	\$54.03	\$0.00
0239-885-03	\$207.59	\$54.03	\$0.00
0239-885-04	\$207.59	\$54.03	\$0.00
0239-885-05	\$207.59	\$54.03	\$0.00
0239-885-06	\$207.59	\$54.03	\$0.00
0239-885-07	\$207.59	\$54.03	\$0.00
0239-885-08	\$207.59	\$54.03	\$0.00
0239-885-09	\$207.59	\$54.03	\$0.00
0239-885-10	\$207.59	\$54.03	\$0.00
0239-885-11	\$207.59	\$54.03	\$0.00

Exhibit B**County of San Bernardino CFD No. 2006-1
FY 2014-2015 Special Tax Levy**

<u>Assessor's Parcel Number</u>	<u>Special Tax A</u>	<u>Special Tax B</u>	<u>Special Tax C</u>
0239-885-12	\$207.59	\$54.03	\$0.00
0239-885-13	\$207.59	\$54.03	\$0.00
0239-885-14	\$207.59	\$54.03	\$0.00
0239-885-15	\$207.59	\$54.03	\$0.00
0239-885-16	\$207.59	\$54.03	\$0.00
0239-885-17	\$207.59	\$54.03	\$0.00
0239-885-18	\$207.59	\$54.03	\$0.00
0239-885-19	\$207.59	\$54.03	\$0.00
0239-885-20	\$207.59	\$54.03	\$0.00
0239-885-21	\$207.59	\$54.03	\$0.00
0239-885-22	\$207.59	\$54.03	\$0.00
0239-885-23	\$207.59	\$54.03	\$0.00
0239-885-24	\$207.59	\$54.03	\$0.00
0239-885-25	\$207.59	\$54.03	\$0.00
0239-885-26	\$207.59	\$54.03	\$0.00
0239-885-27	\$207.59	\$54.03	\$0.00
0239-886-01	\$207.59	\$54.03	\$0.00
0239-886-02	\$207.59	\$54.03	\$0.00
0239-886-03	\$207.59	\$54.03	\$0.00
0239-886-04	\$207.59	\$54.03	\$0.00
0239-886-05	\$207.59	\$54.03	\$0.00
0239-886-06	\$207.59	\$54.03	\$0.00
0239-886-21	\$207.59	\$54.03	\$0.00
0239-886-22	\$207.59	\$54.03	\$0.00
0239-886-23	\$207.59	\$54.03	\$0.00
0239-886-24	\$207.59	\$54.03	\$0.00
0239-886-25	\$207.59	\$54.03	\$0.00
0239-886-26	\$207.59	\$54.03	\$0.00
0239-886-27	\$207.59	\$54.03	\$0.00
0239-886-28	\$207.59	\$54.03	\$0.00
0239-886-29	\$207.59	\$54.03	\$0.00
0239-886-30	\$207.59	\$54.03	\$0.00
0239-886-31	\$207.59	\$54.03	\$0.00
0239-886-32	\$207.59	\$54.03	\$0.00
0239-886-33	\$207.59	\$54.03	\$0.00
0239-886-34	\$207.59	\$54.03	\$0.00
0239-886-35	\$207.59	\$54.03	\$0.00
0239-886-36	\$207.59	\$54.03	\$0.00
0239-886-37	\$207.59	\$54.03	\$0.00

Exhibit B**County of San Bernardino CFD No. 2006-1
FY 2014-2015 Special Tax Levy**

<u>Assessor's Parcel Number</u>	<u>Special Tax A</u>	<u>Special Tax B</u>	<u>Special Tax C</u>
0239-886-38	\$207.59	\$54.03	\$0.00
0239-886-39	\$207.59	\$54.03	\$0.00
0239-886-40	\$207.59	\$54.03	\$0.00
0239-886-41	\$207.59	\$54.03	\$0.00
0239-886-42	\$207.59	\$54.03	\$0.00
0239-886-43	\$207.59	\$54.03	\$0.00
0239-886-44	\$207.59	\$54.03	\$0.00
0239-886-45	\$207.59	\$54.03	\$0.00
0239-886-46	\$207.59	\$54.03	\$0.00
0239-886-47	\$207.59	\$54.03	\$0.00
0239-886-48	\$207.59	\$54.03	\$0.00
0239-886-49	\$207.59	\$54.03	\$0.00
0239-886-50	\$207.59	\$54.03	\$0.00
0239-886-51	\$207.59	\$54.03	\$0.00
0239-886-52	\$207.59	\$54.03	\$0.00
0239-886-53	\$207.59	\$54.03	\$0.00
0239-892-01	\$207.59	\$54.03	\$0.00
0239-892-02	\$207.59	\$54.03	\$0.00
0239-892-03	\$207.59	\$54.03	\$0.00
0239-892-04	\$207.59	\$54.03	\$0.00
0239-892-05	\$207.59	\$54.03	\$0.00
0239-892-06	\$207.59	\$54.03	\$0.00
0239-892-07	\$207.59	\$54.03	\$0.00
0239-892-08	\$207.59	\$54.03	\$0.00
0239-892-09	\$207.59	\$54.03	\$0.00
0239-892-10	\$207.59	\$54.03	\$0.00
0239-892-11	\$207.59	\$54.03	\$0.00
0239-892-12	\$207.59	\$54.03	\$0.00
0239-892-13	\$207.59	\$54.03	\$0.00
0239-892-14	\$207.59	\$54.03	\$0.00
0239-892-15	\$207.59	\$54.03	\$0.00
0239-892-16	\$207.59	\$54.03	\$0.00
0239-892-17	\$207.59	\$54.03	\$0.00
0239-892-18	\$207.59	\$54.03	\$0.00
0239-892-19	\$207.59	\$54.03	\$0.00
0239-892-20	\$207.59	\$54.03	\$0.00
0239-892-21	\$207.59	\$54.03	\$0.00
0239-892-22	\$207.59	\$54.03	\$0.00
0239-892-23	\$207.59	\$54.03	\$0.00

Exhibit B**County of San Bernardino CFD No. 2006-1
FY 2014-2015 Special Tax Levy**

<u>Assessor's Parcel Number</u>	<u>Special Tax A</u>	<u>Special Tax B</u>	<u>Special Tax C</u>
0239-892-24	\$207.59	\$54.03	\$0.00
0239-892-25	\$207.59	\$54.03	\$0.00
0239-892-26	\$207.59	\$54.03	\$0.00
0239-892-27	\$207.59	\$54.03	\$0.00
0239-892-28	\$207.59	\$54.03	\$0.00
0239-892-29	\$207.59	\$54.03	\$0.00
0239-892-30	\$207.59	\$54.03	\$0.00
0239-892-31	\$207.59	\$54.03	\$0.00
0239-892-32	\$207.59	\$54.03	\$0.00
0239-892-33	\$207.59	\$54.03	\$0.00
0239-892-34	\$207.59	\$54.03	\$0.00
0239-892-35	\$207.59	\$54.03	\$0.00
0239-892-36	\$207.59	\$54.03	\$0.00
0239-892-37	\$207.59	\$54.03	\$0.00
0239-892-38	\$207.59	\$54.03	\$0.00
0239-892-39	\$207.59	\$54.03	\$0.00
0239-892-40	\$207.59	\$54.03	\$0.00
0239-892-41	\$207.59	\$54.03	\$0.00
0239-892-42	\$207.59	\$54.03	\$0.00
0239-892-43	\$207.59	\$54.03	\$0.00
0239-892-44	\$207.59	\$54.03	\$0.00
0239-892-45	\$207.59	\$54.03	\$0.00
0239-892-46	\$207.59	\$54.03	\$0.00
0239-892-47	\$207.59	\$54.03	\$0.00
0239-892-48	\$207.59	\$54.03	\$0.00
0239-892-49	\$207.59	\$54.03	\$0.00
0239-892-50	\$207.59	\$54.03	\$0.00
0239-892-51	\$207.59	\$54.03	\$0.00
0239-892-52	\$207.59	\$54.03	\$0.00
0239-892-53	\$207.59	\$54.03	\$0.00
0239-892-54	\$207.59	\$54.03	\$0.00
0239-892-55	\$207.59	\$54.03	\$0.00
0239-892-56	\$207.59	\$54.03	\$0.00
0239-892-57	\$207.59	\$54.03	\$0.00
0239-892-58	\$207.59	\$54.03	\$0.00
0239-892-59	\$207.59	\$54.03	\$0.00
0239-892-60	\$207.59	\$54.03	\$0.00
0239-892-61	\$207.59	\$54.03	\$0.00
0239-892-62	\$207.59	\$54.03	\$0.00

Exhibit B**County of San Bernardino CFD No. 2006-1
FY 2014-2015 Special Tax Levy**

<u>Assessor's Parcel Number</u>	<u>Special Tax A</u>	<u>Special Tax B</u>	<u>Special Tax C</u>
0239-892-63	\$207.59	\$54.03	\$0.00
0239-892-64	\$207.59	\$54.03	\$0.00
0239-892-65	\$207.59	\$54.03	\$0.00
0239-892-66	\$207.59	\$54.03	\$0.00
0239-892-67	\$207.59	\$54.03	\$0.00
0239-892-68	\$207.59	\$54.03	\$0.00
0239-892-69	\$207.59	\$54.03	\$0.00
0239-892-70	\$207.59	\$54.03	\$0.00
0239-892-71	\$207.59	\$54.03	\$0.00
0239-892-72	\$207.59	\$54.03	\$0.00
0239-892-73	\$207.59	\$54.03	\$0.00
0239-892-74	\$207.59	\$54.03	\$0.00
0239-892-75	\$207.59	\$54.03	\$0.00
0239-892-76	\$207.59	\$54.03	\$0.00
0239-892-77	\$207.59	\$54.03	\$0.00
0239-892-78	\$207.59	\$54.03	\$0.00
0239-892-79	\$207.59	\$54.03	\$0.00
0239-892-80	\$207.59	\$54.03	\$0.00
0239-892-81	\$207.59	\$54.03	\$0.00
0239-892-82	\$207.59	\$54.03	\$0.00
0239-892-83	\$207.59	\$54.03	\$0.00
0239-892-84	\$207.59	\$54.03	\$0.00
0239-892-85	\$207.59	\$54.03	\$0.00
0239-892-86	\$207.59	\$54.03	\$0.00
0239-892-87	\$207.59	\$54.03	\$0.00
0239-892-88	\$207.59	\$54.03	\$0.00
0239-892-89	\$207.59	\$54.03	\$0.00
0239-892-90	\$207.59	\$54.03	\$0.00
0239-892-91	\$207.59	\$54.03	\$0.00
0239-892-92	\$207.59	\$54.03	\$0.00
0239-893-01	\$207.59	\$54.03	\$0.00
0239-893-02	\$207.59	\$54.03	\$0.00
0239-893-03	\$207.59	\$54.03	\$0.00
0239-893-04	\$207.59	\$54.03	\$0.00
0239-893-05	\$207.59	\$54.03	\$0.00
0239-893-06	\$207.59	\$54.03	\$0.00
0239-893-08	\$207.59	\$54.03	\$0.00
0239-893-09	\$207.59	\$54.03	\$0.00
0239-893-10	\$207.59	\$54.03	\$0.00

Exhibit B**County of San Bernardino CFD No. 2006-1
FY 2014-2015 Special Tax Levy**

<u>Assessor's Parcel Number</u>	<u>Special Tax A</u>	<u>Special Tax B</u>	<u>Special Tax C</u>
0239-893-11	\$207.59	\$54.03	\$0.00
0239-893-12	\$207.59	\$54.03	\$0.00
0239-893-13	\$207.59	\$54.03	\$0.00
0239-893-14	\$207.59	\$54.03	\$0.00
0239-893-15	\$207.59	\$54.03	\$0.00
0239-893-16	\$207.59	\$54.03	\$0.00
0239-893-17	\$207.59	\$54.03	\$0.00
0239-893-18	\$207.59	\$54.03	\$0.00
0239-893-19	\$207.59	\$54.03	\$0.00
0239-893-20	\$207.59	\$54.03	\$0.00
0239-893-21	\$207.59	\$54.03	\$0.00
0239-893-22	\$207.59	\$54.03	\$0.00
0239-893-23	\$207.59	\$54.03	\$0.00
0239-893-24	\$207.59	\$54.03	\$0.00
0239-893-25	\$207.59	\$54.03	\$0.00
0239-893-26	\$207.59	\$54.03	\$0.00
0239-893-27	\$207.59	\$54.03	\$0.00
0239-893-28	\$207.59	\$54.03	\$0.00
0239-893-29	\$207.59	\$54.03	\$0.00
0239-893-30	\$207.59	\$54.03	\$0.00
0239-893-31	\$207.59	\$54.03	\$0.00
0239-893-32	\$207.59	\$54.03	\$0.00
0239-893-33	\$207.59	\$54.03	\$0.00
0239-893-34	\$207.59	\$54.03	\$0.00
0239-893-35	\$207.59	\$54.03	\$0.00
0239-893-36	\$207.59	\$54.03	\$0.00
0239-893-37	\$207.59	\$54.03	\$0.00
0239-893-38	\$207.59	\$54.03	\$0.00
0239-893-39	\$207.59	\$54.03	\$0.00
0239-893-40	\$207.59	\$54.03	\$0.00
0239-893-41	\$207.59	\$54.03	\$0.00
0239-893-42	\$207.59	\$54.03	\$0.00
0239-893-43	\$207.59	\$54.03	\$0.00
0239-893-44	\$207.59	\$54.03	\$0.00
0239-893-45	\$207.59	\$54.03	\$0.00
0239-893-46	\$207.59	\$54.03	\$0.00
0239-893-47	\$207.59	\$54.03	\$0.00
0239-893-48	\$207.59	\$54.03	\$0.00
0239-893-49	\$207.59	\$54.03	\$0.00

Exhibit B**County of San Bernardino CFD No. 2006-1
FY 2014-2015 Special Tax Levy**

<u>Assessor's Parcel Number</u>	<u>Special Tax A</u>	<u>Special Tax B</u>	<u>Special Tax C</u>
0239-893-50	\$207.59	\$54.03	\$0.00
0239-893-51	\$207.59	\$54.03	\$0.00
0239-893-52	\$207.59	\$54.03	\$0.00
0239-893-53	\$207.59	\$54.03	\$0.00
0239-893-54	\$207.59	\$54.03	\$0.00
0239-893-55	\$207.59	\$54.03	\$0.00
0239-893-56	\$207.59	\$54.03	\$0.00
0239-893-57	\$207.59	\$54.03	\$0.00
0239-893-58	\$207.59	\$54.03	\$0.00
0239-893-59	\$207.59	\$54.03	\$0.00
0239-893-60	\$207.59	\$54.03	\$0.00
0239-893-61	\$207.59	\$54.03	\$0.00
0239-893-62	\$207.59	\$54.03	\$0.00
0239-893-63	\$207.59	\$54.03	\$0.00
0239-893-64	\$207.59	\$54.03	\$0.00
0239-894-01	\$207.59	\$54.03	\$0.00
0239-894-02	\$207.59	\$54.03	\$0.00
0239-894-03	\$207.59	\$54.03	\$0.00
0239-894-12	\$207.59	\$54.03	\$0.00
0239-894-13	\$207.59	\$54.03	\$0.00
0239-894-14	\$207.59	\$54.03	\$0.00
0239-894-15	\$207.59	\$54.03	\$0.00
0239-894-16	\$207.59	\$54.03	\$0.00
0239-894-17	\$207.59	\$54.03	\$0.00
0239-894-18	\$207.59	\$54.03	\$0.00
0239-894-19	\$207.59	\$54.03	\$0.00
0239-894-22	\$207.59	\$54.03	\$0.00
0239-894-23	\$207.59	\$54.03	\$0.00
0239-894-24	\$207.59	\$54.03	\$0.00
0239-894-29	\$207.59	\$54.03	\$0.00
0239-894-30	\$207.59	\$54.03	\$0.00
0239-894-31	\$207.59	\$54.03	\$0.00
0239-894-32	\$207.59	\$54.03	\$0.00
0239-894-33	\$207.59	\$54.03	\$0.00
0239-894-34	\$207.59	\$54.03	\$0.00
0239-894-35	\$207.59	\$54.03	\$0.00
0239-894-36	\$207.59	\$54.03	\$0.00
0239-894-37	\$207.59	\$54.03	\$0.00
0239-894-38	\$207.59	\$54.03	\$0.00

Exhibit B**County of San Bernardino CFD No. 2006-1
FY 2014-2015 Special Tax Levy**

<u>Assessor's Parcel Number</u>	<u>Special Tax A</u>	<u>Special Tax B</u>	<u>Special Tax C</u>
0239-894-39	\$207.59	\$54.03	\$0.00
0239-894-40	\$207.59	\$54.03	\$0.00
0239-894-41	\$207.59	\$54.03	\$0.00
0239-894-42	\$207.59	\$54.03	\$0.00
0239-894-43	\$207.59	\$54.03	\$0.00
0239-894-44	\$207.59	\$54.03	\$0.00
0239-894-45	\$207.59	\$54.03	\$0.00
0239-894-46	\$207.59	\$54.03	\$0.00
0239-894-47	\$207.59	\$54.03	\$0.00
0239-894-48	\$207.59	\$54.03	\$0.00
0239-894-49	\$207.59	\$54.03	\$0.00
0239-895-01	\$207.59	\$54.03	\$0.00
0239-895-02	\$207.59	\$54.03	\$0.00
0239-895-03	\$207.59	\$54.03	\$0.00
0239-895-04	\$207.59	\$54.03	\$0.00
0239-895-05	\$207.59	\$54.03	\$0.00
0239-895-06	\$207.59	\$54.03	\$0.00
0239-895-07	\$207.59	\$54.03	\$0.00
0239-895-08	\$207.59	\$54.03	\$0.00
0239-895-09	\$207.59	\$54.03	\$0.00
0239-895-10	\$207.59	\$54.03	\$0.00
0239-895-11	\$207.59	\$54.03	\$0.00
0239-895-12	\$207.59	\$54.03	\$0.00
0239-895-13	\$207.59	\$54.03	\$0.00
0239-895-14	\$207.59	\$54.03	\$0.00
0239-895-15	\$207.59	\$54.03	\$0.00
0239-895-17	\$207.59	\$54.03	\$0.00
0239-895-18	\$207.59	\$54.03	\$0.00
0239-895-19	\$207.59	\$54.03	\$0.00
0239-895-26	\$207.59	\$54.03	\$0.00
0239-895-27	\$207.59	\$54.03	\$0.00
0239-895-28	\$207.59	\$54.03	\$0.00
0239-895-29	\$207.59	\$54.03	\$0.00
0239-895-30	\$207.59	\$54.03	\$0.00
0239-895-31	\$207.59	\$54.03	\$0.00
0239-895-32	\$207.59	\$54.03	\$0.00
0239-895-33	\$207.59	\$54.03	\$0.00
0239-895-44	\$207.59	\$54.03	\$0.00
0239-895-45	\$207.59	\$54.03	\$0.00

Exhibit B**County of San Bernardino CFD No. 2006-1
FY 2014-2015 Special Tax Levy**

<u>Assessor's Parcel Number</u>	<u>Special Tax A</u>	<u>Special Tax B</u>	<u>Special Tax C</u>
0239-895-46	\$207.59	\$54.03	\$0.00
0239-896-01	\$207.59	\$54.03	\$0.00
0239-896-02	\$207.59	\$54.03	\$0.00
0239-896-03	\$207.59	\$54.03	\$0.00
0239-896-04	\$207.59	\$54.03	\$0.00
0239-896-05	\$207.59	\$54.03	\$0.00
0239-896-06	\$207.59	\$54.03	\$0.00
0239-896-07	\$207.59	\$54.03	\$0.00
0239-896-08	\$207.59	\$54.03	\$0.00
0239-896-09	\$207.59	\$54.03	\$0.00
0239-896-10	\$207.59	\$54.03	\$0.00
0239-896-11	\$207.59	\$54.03	\$0.00
0239-896-12	\$207.59	\$54.03	\$0.00
0239-896-13	\$207.59	\$54.03	\$0.00
0239-896-14	\$207.59	\$54.03	\$0.00
0239-896-15	\$207.59	\$54.03	\$0.00
0239-896-16	\$207.59	\$54.03	\$0.00
0239-896-17	\$207.59	\$54.03	\$0.00
0239-896-18	\$207.59	\$54.03	\$0.00
0239-896-19	\$207.59	\$54.03	\$0.00
0239-896-20	\$207.59	\$54.03	\$0.00
0239-896-21	\$207.59	\$54.03	\$0.00
0239-896-22	\$207.59	\$54.03	\$0.00
0239-896-23	\$207.59	\$54.03	\$0.00
0239-896-24	\$207.59	\$54.03	\$0.00
0239-896-25	\$207.59	\$54.03	\$0.00
0239-896-26	\$207.59	\$54.03	\$0.00
0239-896-27	\$207.59	\$54.03	\$0.00
0239-896-28	\$207.59	\$54.03	\$0.00
0239-896-29	\$207.59	\$54.03	\$0.00
0239-896-30	\$207.59	\$54.03	\$0.00
0239-896-31	\$207.59	\$54.03	\$0.00
0239-896-32	\$207.59	\$54.03	\$0.00
0239-896-33	\$207.59	\$54.03	\$0.00
0239-896-34	\$207.59	\$54.03	\$0.00
0239-896-35	\$207.59	\$54.03	\$0.00
0239-896-36	\$207.59	\$54.03	\$0.00
0239-896-37	\$207.59	\$54.03	\$0.00
0239-896-38	\$207.59	\$54.03	\$0.00

Exhibit B**County of San Bernardino CFD No. 2006-1
FY 2014-2015 Special Tax Levy**

<u>Assessor's Parcel Number</u>	<u>Special Tax A</u>	<u>Special Tax B</u>	<u>Special Tax C</u>
0239-896-39	\$207.59	\$54.03	\$0.00
0239-896-40	\$207.59	\$54.03	\$0.00
0239-896-41	\$207.59	\$54.03	\$0.00
0239-896-42	\$207.59	\$54.03	\$0.00
0239-896-43	\$207.59	\$54.03	\$0.00
0239-896-44	\$207.59	\$54.03	\$0.00
0239-896-45	\$207.59	\$54.03	\$0.00
0239-896-46	\$207.59	\$54.03	\$0.00
0239-902-01	\$207.59	\$54.03	\$0.00
0239-902-02	\$207.59	\$54.03	\$0.00
0239-902-03	\$207.59	\$54.03	\$0.00
0239-902-04	\$207.59	\$54.03	\$0.00
0239-902-05	\$207.59	\$54.03	\$0.00
0239-902-06	\$207.59	\$54.03	\$0.00
0239-902-07	\$207.59	\$54.03	\$0.00
0239-902-08	\$207.59	\$54.03	\$0.00
0239-902-09	\$207.59	\$54.03	\$0.00
0239-902-10	\$207.59	\$54.03	\$0.00
0239-902-11	\$207.59	\$54.03	\$0.00
0239-902-12	\$207.59	\$54.03	\$0.00
0239-902-13	\$207.59	\$54.03	\$0.00
0239-902-14	\$207.59	\$54.03	\$0.00
0239-902-15	\$207.59	\$54.03	\$0.00
0239-902-16	\$207.59	\$54.03	\$0.00
0239-902-17	\$207.59	\$54.03	\$0.00
0239-902-18	\$207.59	\$54.03	\$0.00
0239-902-19	\$207.59	\$54.03	\$0.00
0239-902-20	\$207.59	\$54.03	\$0.00
0239-902-21	\$207.59	\$54.03	\$0.00
0239-902-22	\$207.59	\$54.03	\$0.00
0239-902-23	\$207.59	\$54.03	\$0.00
0239-902-24	\$207.59	\$54.03	\$0.00
0239-902-25	\$207.59	\$54.03	\$0.00
0239-902-26	\$207.59	\$54.03	\$0.00
0239-902-27	\$207.59	\$54.03	\$0.00
0239-902-28	\$207.59	\$54.03	\$0.00
0239-902-29	\$207.59	\$54.03	\$0.00
0239-902-30	\$207.59	\$54.03	\$0.00
0239-902-31	\$207.59	\$54.03	\$0.00

Exhibit B**County of San Bernardino CFD No. 2006-1
FY 2014-2015 Special Tax Levy**

<u>Assessor's Parcel Number</u>	<u>Special Tax A</u>	<u>Special Tax B</u>	<u>Special Tax C</u>
0239-902-32	\$207.59	\$54.03	\$0.00
0239-902-33	\$207.59	\$54.03	\$0.00
0239-902-34	\$207.59	\$54.03	\$0.00
0239-902-35	\$207.59	\$54.03	\$0.00
0239-902-36	\$207.59	\$54.03	\$0.00
0239-902-37	\$207.59	\$54.03	\$0.00
0239-902-38	\$207.59	\$54.03	\$0.00
0239-902-39	\$207.59	\$54.03	\$0.00
0239-902-40	\$207.59	\$54.03	\$0.00
0239-902-41	\$207.59	\$54.03	\$0.00
0239-902-42	\$207.59	\$54.03	\$0.00
0239-902-43	\$207.59	\$54.03	\$0.00
0239-902-44	\$207.59	\$54.03	\$0.00
0239-902-45	\$207.59	\$54.03	\$0.00
0239-902-46	\$207.59	\$54.03	\$0.00
0239-902-47	\$207.59	\$54.03	\$0.00
0239-902-48	\$207.59	\$54.03	\$0.00
0239-902-49	\$207.59	\$54.03	\$0.00
0239-902-50	\$207.59	\$54.03	\$0.00
0239-902-51	\$207.59	\$54.03	\$0.00
0239-902-52	\$207.59	\$54.03	\$0.00
0239-902-53	\$207.59	\$54.03	\$0.00
0239-902-54	\$207.59	\$54.03	\$0.00
0239-902-55	\$207.59	\$54.03	\$0.00
0239-902-56	\$207.59	\$54.03	\$0.00
0239-902-57	\$207.59	\$54.03	\$0.00
0239-902-58	\$207.59	\$54.03	\$0.00
0239-902-59	\$207.59	\$54.03	\$0.00
0239-902-60	\$207.59	\$54.03	\$0.00
0239-902-61	\$207.59	\$54.03	\$0.00
0239-902-62	\$207.59	\$54.03	\$0.00
0239-902-63	\$207.59	\$54.03	\$0.00
0239-902-64	\$207.59	\$54.03	\$0.00
0239-902-65	\$207.59	\$54.03	\$0.00
0239-902-66	\$207.59	\$54.03	\$0.00
0239-902-67	\$207.59	\$54.03	\$0.00
0239-902-68	\$207.59	\$54.03	\$0.00
0239-902-69	\$207.59	\$54.03	\$0.00
0239-902-70	\$207.59	\$54.03	\$0.00

Exhibit B

**County of San Bernardino CFD No. 2006-1
FY 2014-2015 Special Tax Levy**

<u>Assessor's Parcel Number</u>	<u>Special Tax A</u>	<u>Special Tax B</u>	<u>Special Tax C</u>
Total FY 2014-15 Special Tax Levy	\$170,016.21	\$44,250.57	\$0.00
Total Number of Parcels Taxed	819	819	0