

**COUNTY OF SAN BERNARDINO
IMPROVEMENT AREA NO. 1 OF
COMMUNITY FACILITIES DISTRICT
No. 2006-1
(LYTLE CREEK NORTH)**

May 6, 2013

*Public Finance
Facilities Planning
Urban Economics*

Newport Beach
Fresno
Riverside
San Francisco
Chicago
Dallas

**ADMINISTRATION REPORT
FISCAL YEAR 2013-2014**

**COUNTY OF SAN BERNARDINO
IMPROVEMENT AREA NO. 1 OF
COMMUNITY FACILITIES DISTRICT NO. 2006-1
(LYTLE CREEK NORTH)**

Prepared for

COUNTY OF SAN BERNARDINO
157 W. Fifth Street
San Bernardino, California 92371

Prepared by

DAVID TAUSSIG & ASSOCIATES, INC.
5000 Birch Street, Suite 6000
Newport Beach, California 92660
(949) 955-1500

Table of Contents

<i>Section</i>	<i>Page</i>
<i>I. Introduction</i>	1
<i>II. Special Tax Classifications and Development Update</i>	2
Special Tax Classifications	2
Development Update	2
<i>III. Sources and Uses of Funds</i>	4
<i>IV. Fiscal Year 2012-2013 Special Tax Levy</i>	5
<i>V. Fiscal Year 2013-2014 Special Tax Requirement</i>	6
<i>VI. Method of Apportionment</i>	8
Maximum Special Tax Rates	8
Apportionment of Special Taxes	8

EXHIBITS

- Exhibit A: Boundary Map*
Exhibit B: Summary of Transactions to Funds and Accounts from 4/1/2011 to 3/31/2012
Exhibit C: Special Tax Roll Fiscal Year 2013-2014

I. Introduction

This report presents the findings of the research and financial analysis performed by David Taussig & Associates, Inc. to determine the special tax requirement for Improvement Area No. 1 (“IA No. 1”) of Community Facilities District No. 2006-1 (Lytle Creek North) (“CFD No. 2006-1”) of the County of San Bernardino (“the County”) for fiscal year 2013-2014.

CFD No. 2006-1 is a legally constituted governmental entity established under the Mello-Roos Community Facilities Act of 1982, (the "Act") as amended. The Act provides an alternative method for the financing of certain public facilities and services. Specifically, IA No. 1 of CFD No. 2006-1 is authorized to issue up to \$28,000,000 in bonds. IA No. 1 issued \$7,130,000 in bonds in November 2010 to finance certain street, water, sewer, storm drain, flood control, and park and recreational improvements (the “Bonds”). Additional bonds are expected to be issued as development proceeds within IA No. 1. A map showing the property in IA No. 1 is included in Exhibit A.

In calculating the special tax liability for fiscal year 2013-2014, this report examines the financial obligations of the current fiscal year and analyzes the level of development within IA No. 1.

This report is organized into the following sections:

Section II

Section II provides an update of the development activity occurring within IA No. 1.

Section III

Section III examines the financial activity in the funds and accounts established pursuant to the bond indenture dated November 1, 2010, between IA No. 1 of CFD No. 2006-1 and the trustee. A year-to-date summary illustrating all disbursements, special tax receipts and interest earnings of the Bonds is provided.

Section IV

Section IV analyzes the previous year's special tax levy.

Section V

Section V determines the financial obligations of IA No. 1 for fiscal year 2013-2014.

Section VI

Section VI reviews the methodology used to apportion the special tax requirement to Developed Property and Undeveloped Property. A table of the 2013-2014 special tax rates for Developed Property and Undeveloped Property is included.

II. Special Tax Classifications and Development Update

Special Tax Classifications

The methodology employed to calculate and apportion the special tax is contained in a document entitled the Rate and Method of Apportionment. The Rate and Method of Apportionment defines two primary categories of property, namely “Developed Property” and “Undeveloped Property”. For both Zone A and Zone B of IA No. 1, the category of Developed Property is in turn divided into five separate special tax classifications which vary with dwelling unit size for residential development and acreage for non-residential development.

Developed Property is distinguished from Undeveloped Property by the issuance of a building permit. Specifically, property for which a building permit was issued between January 2, 2006 and March 1 of the prior Fiscal Year will be classified as Developed Property in the following fiscal year. For example, all property in IA No. 1 for which a building permit was issued between January 2, 2006 and March 1, 2013, will be classified as Developed Property in fiscal year 2013-2014.

Development Update

Review of the County of San Bernardino’s building permit records indicate that between January 2, 2006 and March 1, 2013 building permits for 290 units of residential property in Zone A and 107 units of residential property in Zone B had been issued within IA No. 1. A total of 25.39 acres in IA No. 1 are considered Undeveloped Property. The table below indicates the current amount of Developed Property and Undeveloped Property within IA No. 1.

Improvement Area No. 1 Cumulative Developed Property and Undeveloped Property

Zone A

Land Use Class	Description	Residential Floor Area	Number of Units/Acres
1	Residential Property	> 2,500 s.f.	48 units
2	Residential Property	2,350 – 2,500 s.f.	54 units
3	Residential Property	2,175 – 2,349 s.f.	86 units
4	Residential Property	2,050 – 2,174 s.f.	60 units
5	Residential Property	< 2,050 s.f.	42 units
6	Non-Residential Property	NA	0 acres
NA	Undeveloped Property	NA	0.00 acres

Zone B

Land Use Class	Description	Residential Floor Area	Number of Units/Acres
1	Residential Property	> 3,700 s.f.	11 units
2	Residential Property	3,450 – 3,700 s.f.	0 units
3	Residential Property	3,200 – 3,449 s.f.	22 units
4	Residential Property	3,000 – 3,199 s.f.	13 units
5	Residential Property	< 3,000 s.f.	61 units
6	Non-Residential Property	NA	0 acres
NA	Undeveloped Property	NA	25.39 acres

III. Sources and Uses of Funds

IA No. 1 Series 2010's sources of funds in the funds held by Trustee from April 1, 2012 through March 31, 2013 totaled \$949,695. This consisted of \$948,981 in special tax receipts and \$714 in investment earnings.

Total uses of funds in the funds held by Trustee for the time period mentioned above totaled \$530,064. Interest and principal payments on the bonds equaled \$354,063 and \$125,000, respectively. Payments for professional services incurred by IA No. 1 equaled \$51,002.

A more detailed analysis of all transactions within the Series 2010 funds and accounts for the time period mentioned above is included as Exhibit B.

As of March 31, 2013, the various funds and accounts established for the Bonds had the following balances:

Special Tax Fund	\$473,215 [3]
Redemption Fund [1]	\$0
Interest Account	\$13
Principal Account	\$3
Reserve Account	\$485,403 [2]
Administrative Expenses Account	\$10,017
Costs of Issuance	\$0
County Facilities Account	\$0
[1] Fund is held by the County of San Bernardino. DTA has no statements on file. Balance as of April 17, 2013 provided by County.	
[2] The current Reserve Requirement is equal to \$484,706.26.	
[3] Based on balance as of 5/3/2013.	

IV. Fiscal Year 2012-2013 Special Tax Levy

The total special tax levy for fiscal year 2012-2013 equaled \$651,277. As of May 3, 2013, \$647,000 in special taxes due for fiscal year 2012-2013 had been collected by the County, resulting in a delinquency rate of approximately 0.66%. Of the 385 parcels that were subject to the special tax, three failed to pay some or all of their fiscal year 2012-2013 special taxes in a timely manner.

V. *Fiscal Year 2013-2014 Special Tax Requirement*

The Assigned Special Tax can be levied on Developed Property to pay for debt service on the Bonds, the direct construction or acquisition of facilities eligible to be financed by IA No. 1, and annual administrative expenses as provided for by the RMA for IA No. 1. At the time of the issuance of the Bonds, the County determined that it would levy special taxes on Developed Property at 53.03% of the Assigned Special Tax so long as that amount generates sufficient revenues to pay for debt service on the Bonds and administrative expenses. Any additional special tax revenues will be used to pay directly for facilities. For fiscal year 2013-2014, the special tax requirement for IA No. 1 is equal to \$671,121 and is calculated as follows:

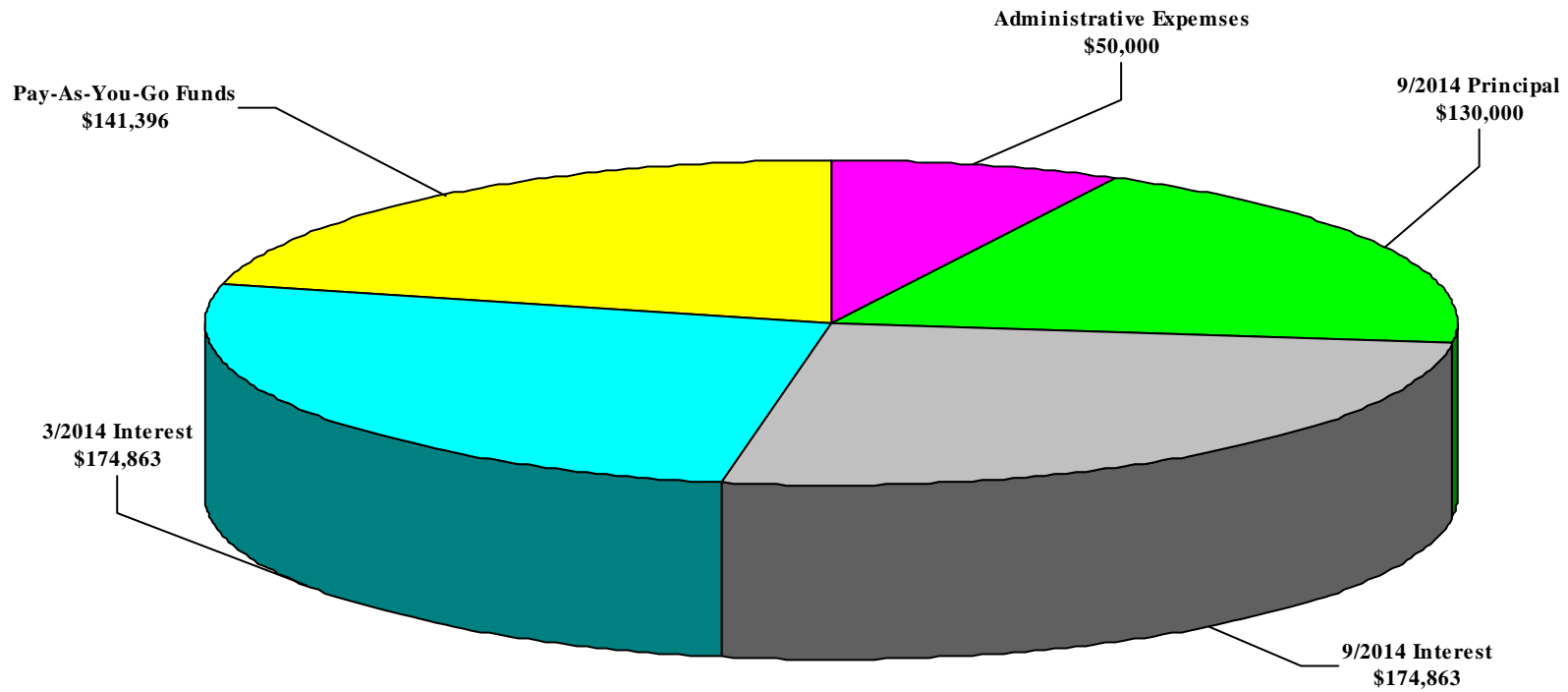
**County of San Bernardino
Improvement Area No. 1 of Community Facilities District No. 2006-1
(Lytle Creek North)
Fiscal Year 2013-2014 Special Tax Requirement**

Fund Balances as of March 31, 2013		\$491,205
Special Tax Fund [1]	\$473,215	
County-Held Redemption Fund [2]	\$0	
Administrative Expense Account	\$10,017	
Surplus Monies in the Reserve Fund	\$696	
Estimated 2nd Installment FY 2012-2013 Taxes [3]	\$7,261	
Remaining Fiscal Year 2012-2013 Obligations		(\$491,205)
Interest Due September 1, 2013	(\$176,406)	
Principal Due September 1, 2013	(\$130,000)	
Administrative Expenses	(\$50,000)	
Pay-As-You-Go Funds [4]	(\$134,799)	
Fiscal Year 2012-2013 Surplus / (Draw on Reserve Fund)		\$0
Fiscal Year 2013-2014 Obligations		(\$671,121)
Interest Due March 1, 2014	(\$174,863)	
Interest Due September 1, 2014	(\$174,863)	
Principal Due September 1, 2014	(\$130,000)	
Administrative Expenses	(\$50,000)	
Pay-As-You-Go Funds [4]	(\$141,396)	
Fiscal Year 2013-2014 Special Tax Requirement		\$671,121
[1] As of May 3, 2013 per Trustee. [2] As of April 17, 2013 per County. [3] Based on amount not yet apportioned for the 2 nd installment of fiscal year 2012-2013 less delinquent special taxes in the amount of \$4,276.86 as of May 3, 2013. [4] Pay-as-you-go amount is an estimate based on the expected Annual Special Tax receipts.		

The components of the fiscal year 2013-2014 special tax requirements are shown graphically on the following page.

**County of San Bernardino
IA No. 1 of Community Facilities District No. 2006-1
(Lytle Creek North)**

Fiscal Year 2013-2014 Special Tax Levy



Total Special Tax Requirement = \$671,121

VI. Method of Apportionment

Maximum Special Tax Rates

The amount of special taxes that IA No. 1 may levy is strictly limited by the maximum rates set forth in Section C of the Rate and Method of Apportionment.¹

The fiscal year 2013-2014 maximum special tax rates for Developed property are shown in the tables on the following page. The maximum special tax rates do not escalate.

Apportionment of Special Taxes

The special tax that is apportioned to each parcel is determined through the application of Section D of the Rate and Method of Apportionment. The Board of Supervisors shall first determine the Special Tax Requirement. Section D apportions the special tax requirement in four steps that prioritize the order in which Developed Property and Undeveloped Property are taxed.

The first step states that the special tax shall be levied against each parcel of Developed Property at up to 100% of the applicable Assigned Special Tax until the amount of the Special Taxes equals the Special Tax Requirement. If the special taxes raised pursuant to the first step are less than the special tax requirement, then the second step is applied. The second step states that the special tax shall be levied against each parcel of Undeveloped Property at up to 100 percent of the maximum special tax for Undeveloped Property.

The third and fourth steps are designed to accommodate changes in land use and are intended to be used only as a last resort. Since actual land uses have not substantially deviated from the original projections, these steps are not necessary.

Application of the first step generates special tax revenues of \$1,265,550 from Developed Property which is more than sufficient to meet all of the obligations for IA No. 1 as outlined in Section IV. As stated earlier, the County has decided to limit the fiscal year 2013-2014 special tax levy to 53.03% of the Assigned Special Tax which generates an amount equal to the fiscal year 2013-2014 Special Tax Requirement of \$671,121.

The fiscal year 2013-2014 maximum and actual special tax rates are shown for Developed Property in the following table. The Special Tax Roll, which lists the actual special tax levied against each parcel, is shown in Exhibit C.

1 Technically, Section C states that the maximum special tax for a parcel of Developed Property is equal to the greater of (i) the "Backup Special Tax" or (ii) the Assigned Special Tax. The Backup Special Tax was established for the contingency of a shortfall in revenues resulting from significant changes in development densities. The contingency for which the Backup Special Tax was established does not exist and hence, all discussion of maximum tax rates for Developed Property focuses on the Assigned Special Tax.

**County of San Bernardino
Fiscal Year 2013-2014
Maximum Special Taxes
Improvement Area No. 1**

Zone A

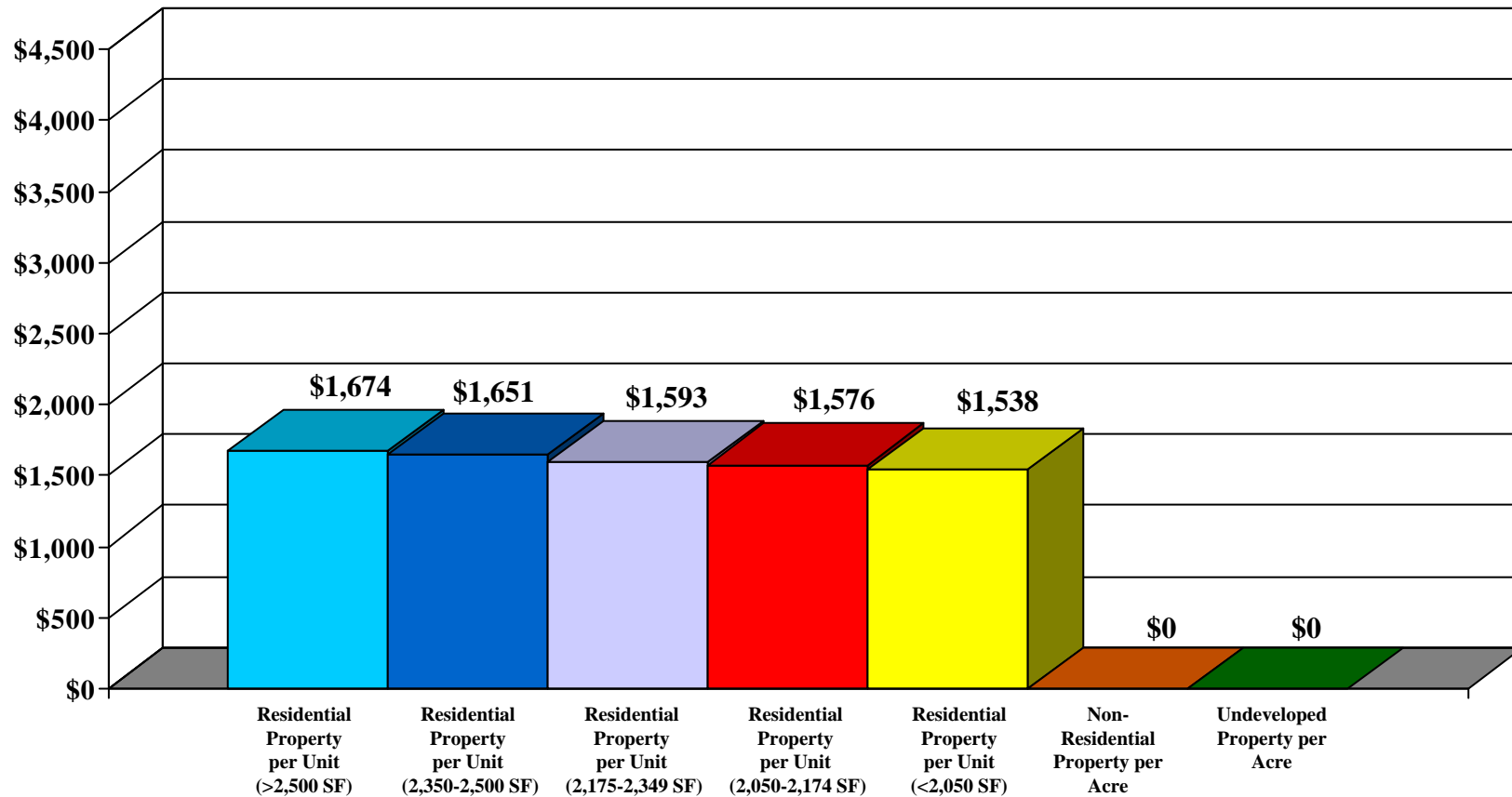
Land Use Class	Description	Residential Floor Area	Maximum Special Tax	FY 2013-2014 Actual Special Tax
1	Residential Property	> 2,500 s.f.	\$3,156.00 per unit	\$1,673.63 per unit
2	Residential Property	2,350 – 2,500 s.f.	\$3,113.00 per unit	\$1,650.82 per unit
3	Residential Property	2,175 – 2,349 s.f.	\$3,004.00 per unit	\$1,593.02 per unit
4	Residential Property	2,050 – 2,174 s.f.	\$2,972.00 per unit	\$1,576.05 per unit
5	Residential Property	< 2,050 s.f.	\$2,901.00 per unit	\$1,538.40 per unit
6	Non-Residential Property	NA	\$26,775.00 per Acre	\$0.00 per acre

Zone B

Land Use Class	Description	Residential Floor Area	Maximum Special Tax	FY 2013-2014 Actual Special Tax
1	Residential Property	> 3,700 s.f.	\$4,028.00 per unit	\$2,136.05 per unit
2	Residential Property	3,450 – 3,700 s.f.	\$3,872.00 per unit	\$0.00 per unit
3	Residential Property	3,200 – 3,449 s.f.	\$3,804.00 per unit	\$2,017.26 per unit
4	Residential Property	3,000 – 3,199 s.f.	\$3,615.00 per unit	\$1,917.03 per unit
5	Residential Property	< 3,000 s.f.	\$3,483.00 per unit	\$1,847.03 per unit
6	Non-Residential Property	NA	\$22,890.00 per Acre	\$0.00 per acre

**County of San Bernardino
 IA No. 1 of Community Facilities District No. 2006-1
 (Lytle Creek North)**

**Fiscal Year 2013-2014 Actual Special Tax Levy
 Zone A**



**County of San Bernardino
 IA No. 1 of Community Facilities District No. 2006-1
 (Lytle Creek North)**

**Fiscal Year 2013-2014 Actual Special Tax Levy
 Zone B**

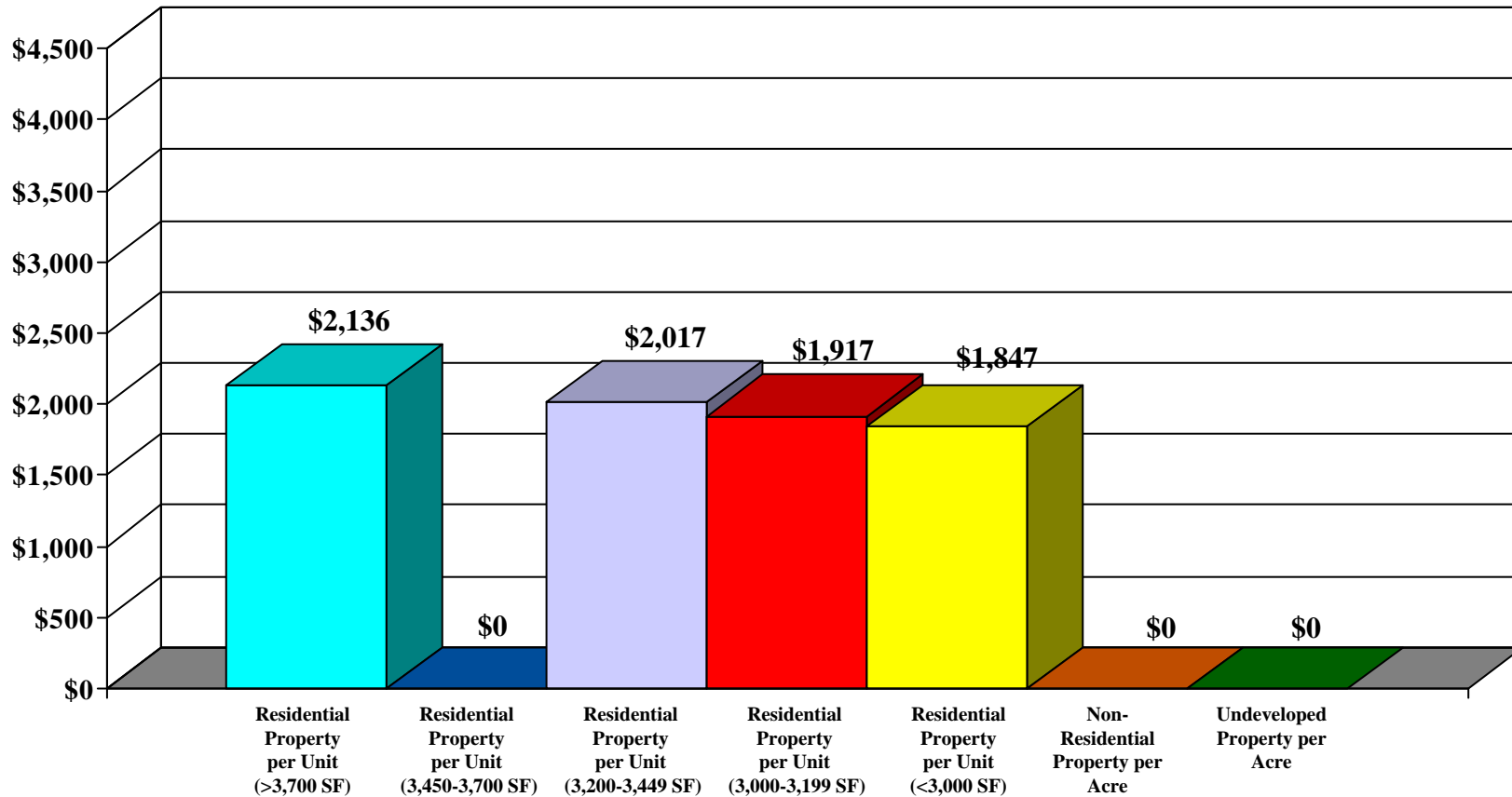
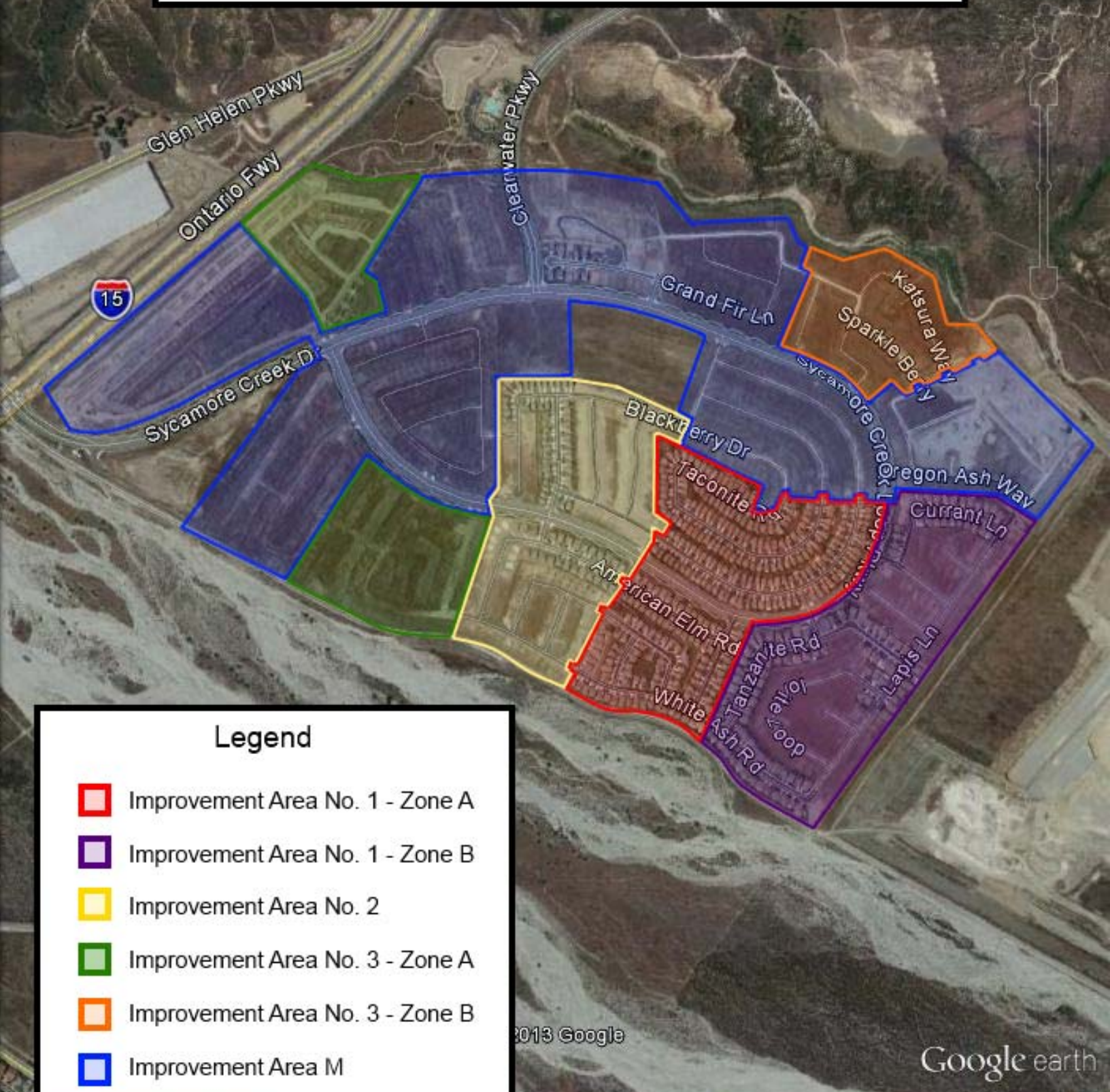


EXHIBIT A

*County of San Bernardino
Improvement Area No. 1 of
Community Facilities District No. 2006-1*

Boundary Map

County of San Bernardino
 Community Facilities District No. 2006-1
 (Lytle Creek North)
 Improvement Area M
 and Improvement Area Nos. 1, 2, 3



Legend

- Improvement Area No. 1 - Zone A
- Improvement Area No. 1 - Zone B
- Improvement Area No. 2
- Improvement Area No. 3 - Zone A
- Improvement Area No. 3 - Zone B
- Improvement Area M

EXHIBIT B

*County of San Bernardino
Improvement Area No. 1 of
Community Facilities District No. 2006-1*

*Summary of Transactions to Fund and Accounts
Series 2010*

**COUNTY OF SAN BERNARDINO
IMPROVEMENT AREA NO. 1 OF COMMUNITY FACILITIES DISTRICT NO. 2006-1
(LYTTLE CREEK NORTH)
SPECIAL TAX BONDS, SERIES 2010
FISCAL YEAR 2012-2013 (4/1/2012 through 3/31/13)**

	SPECIAL TAX FUND	INTEREST ACCOUNT	PRINCIPAL ACCOUNT	RESERVE FUND	ADMIN EXPENSE FUND	COST OF ISSUANCE FUND	COUNTY FACILITIES ACCOUNT	TOTAL
BEGINNING BALANCE	\$1,032,511	\$6	\$0	\$485,209	\$10,013	\$20,390	\$0	\$1,548,129
SOURCES OF FUNDS								
BOND PROCEEDS	\$0	\$0	\$0	\$0	\$0	\$0	\$0	\$0
SPECIAL TAX RECEIPTS	\$948,981	\$0	\$0	\$0	\$0	\$0	\$0	\$948,981
INVESTMENT AGREEMENT EARNINGS	\$0	\$0	\$0	\$0	\$0	\$0	\$0	\$0
OTHER INVESTMENT EARNINGS	\$404	\$7	\$3	\$194	\$4	\$6	\$97	\$714
MISCELLANEOUS	\$0	\$0	\$0	\$0	\$0	\$0	\$0	\$0
TOTAL SOURCES	\$949,386	\$7	\$3	\$194	\$4	\$6	\$97	\$949,695
USES OF FUNDS								
INTEREST PAYMENTS	\$0	(\$354,063)	\$0	\$0	\$0	\$0	\$0	(\$354,063)
PRINCIPAL PAYMENTS	\$0	\$0	(\$125,000)	\$0	\$0	\$0	\$0	(\$125,000)
PUBLIC FACILITIES	\$0	\$0	\$0	\$0	\$0	\$0	\$0	\$0
PROFESSIONAL SERVICES	(\$1,002)	\$0	\$0	\$0	(\$50,000)	\$0	\$0	(\$51,002)
MISCELLANEOUS	\$0	\$0	\$0	\$0	\$0	\$0	\$0	\$0
TOTAL USES	(\$1,002)	(\$354,063)	(\$125,000)	\$0	(\$50,000)	\$0	\$0	(\$530,064)
TRANSFERS	(\$1,823,425)	\$354,063	\$125,000	\$0	\$50,000	(\$20,396)	\$1,314,758	\$0
ENDING BALANCE	\$157,470	\$13	\$3	\$485,403	\$10,017	\$0	\$1,314,854	\$1,967,760

RESERVE REQUIREMENT = \$484,706.26

PRINTED: 03/05/13
10:46

PAGE:1

COUNTY OF SAN BERNARDINO
IMPROVEMENT AREA NO. 1 OF COMMUNITY FACILITIES DISTRICT NO. 2006-1
(LYTLE CREEK NORTH)
SPECIAL TAX BONDS, SERIES 2010
April 2012

	SPECIAL TAX FUND	INTEREST ACCOUNT	PRINCIPAL ACCOUNT	RESERVE FUND	ADMIN EXPENSE FUND	WATER DISTRICT FACILITIES ACCOUNT	COUNTY FACILITIES ACCOUNT	TOTAL
BEGINNING BALANCE	\$1,032,511	\$6	\$0	\$485,209	\$10,013	\$20,390	\$0	\$1,548,129
SOURCES OF FUNDS								
BOND PROCEEDS	\$0	\$0	\$0	\$0	\$0	\$0	\$0	\$0
SPECIAL TAX RECEIPTS	\$0	\$0	\$0	\$0	\$0	\$0	\$0	\$0
INVESTMENT AGREEMENT EARNINGS	\$0	\$0	\$0	\$0	\$0	\$0	\$0	\$0
OTHER INVESTMENT EARNINGS	\$35	\$0	\$0	\$16	\$0	\$1	\$0	\$52
<u>MISCELLANEOUS</u>	<u>\$0</u>	<u>\$0</u>	<u>\$0</u>	<u>\$0</u>	<u>\$0</u>	<u>\$0</u>	<u>\$0</u>	<u>\$0</u>
TOTAL SOURCES	\$35	\$0	\$0	\$16	\$0	\$1	\$0	\$52
USES OF FUNDS								
INTEREST PAYMENTS	\$0	\$0	\$0	\$0	\$0	\$0	\$0	\$0
PRINCIPAL PAYMENTS	\$0	\$0	\$0	\$0	\$0	\$0	\$0	\$0
PUBLIC FACILITIES	\$0	\$0	\$0	\$0	\$0	\$0	\$0	\$0
PROFESSIONAL SERVICES	\$0	\$0	\$0	\$0	\$0	\$0	\$0	\$0
<u>MISCELLANEOUS</u>	<u>\$0</u>	<u>\$0</u>	<u>\$0</u>	<u>\$0</u>	<u>\$0</u>	<u>\$0</u>	<u>\$0</u>	<u>\$0</u>
TOTAL USES	\$0	\$0	\$0	\$0	\$0	\$0	\$0	\$0
TRANSFERS	\$0	\$0	\$0	\$0	\$0	\$0	\$0	\$0
ENDING BALANCE	\$1,032,545	\$6	\$0	\$485,226	\$10,013	\$20,391	\$0	\$1,548,182

RESERVE REQUIREMENT = \$484,706.26

PRINTED: 03/05/13
10:33

PAGE:1

COUNTY OF SAN BERNARDINO
IMPROVEMENT AREA NO. 1 OF COMMUNITY FACILITIES DISTRICT NO. 2006-1
(LYTLE CREEK NORTH)
SPECIAL TAX BONDS, SERIES 2010
May 2012

	SPECIAL TAX FUND	INTEREST ACCOUNT	PRINCIPAL ACCOUNT	RESERVE FUND	ADMIN EXPENSE FUND	WATER DISTRICT FACILITIES ACCOUNT	COUNTY FACILITIES ACCOUNT	TOTAL
BEGINNING BALANCE	\$1,032,545	\$6	\$0	\$485,226	\$10,013	\$20,391	\$0	\$1,548,182
SOURCES OF FUNDS								
BOND PROCEEDS	\$0	\$0	\$0	\$0	\$0	\$0	\$0	\$0
SPECIAL TAX RECEIPTS	\$612,207	\$0	\$0	\$0	\$0	\$0	\$0	\$612,207
INVESTMENT AGREEMENT EARNINGS	\$0	\$0	\$0	\$0	\$0	\$0	\$0	\$0
OTHER INVESTMENT EARNINGS	\$34	\$0	\$0	\$16	\$0	\$1	\$0	\$51
<u>MISCELLANEOUS</u>	<u>\$0</u>	<u>\$0</u>	<u>\$0</u>	<u>\$0</u>	<u>\$0</u>	<u>\$0</u>	<u>\$0</u>	<u>\$0</u>
TOTAL SOURCES	\$612,241	\$0	\$0	\$16	\$0	\$1	\$0	\$612,258
USES OF FUNDS								
INTEREST PAYMENTS	\$0	\$0	\$0	\$0	\$0	\$0	\$0	\$0
PRINCIPAL PAYMENTS	\$0	\$0	\$0	\$0	\$0	\$0	\$0	\$0
PUBLIC FACILITIES	\$0	\$0	\$0	\$0	\$0	\$0	\$0	\$0
PROFESSIONAL SERVICES	\$0	\$0	\$0	\$0	\$0	\$0	\$0	\$0
<u>MISCELLANEOUS</u>	<u>\$0</u>	<u>\$0</u>	<u>\$0</u>	<u>\$0</u>	<u>\$0</u>	<u>\$0</u>	<u>\$0</u>	<u>\$0</u>
TOTAL USES	\$0	\$0	\$0	\$0	\$0	\$0	\$0	\$0
TRANSFERS	\$0	\$0	\$0	\$0	\$0	\$0	\$0	\$0
ENDING BALANCE	\$1,644,786	\$6	\$0	\$485,241	\$10,014	\$20,391	\$0	\$2,160,439

RESERVE REQUIREMENT = \$484,706.26

COUNTY OF SAN BERNARDINO
IMPROVEMENT AREA NO. 1 OF COMMUNITY FACILITIES DISTRICT NO. 2006-1
(LYTLE CREEK NORTH)
SPECIAL TAX BONDS, SERIES 2010
June 2012

	SPECIAL TAX FUND	INTEREST ACCOUNT	PRINCIPAL ACCOUNT	RESERVE FUND	ADMIN EXPENSE FUND	WATER DISTRICT FACILITIES ACCOUNT	COUNTY FACILITIES ACCOUNT	TOTAL
BEGINNING BALANCE	\$1,644,786	\$6	\$0	\$485,241	\$10,014	\$20,391	\$0	\$2,160,439
SOURCES OF FUNDS								
BOND PROCEEDS	\$0	\$0	\$0	\$0	\$0	\$0	\$0	\$0
SPECIAL TAX RECEIPTS	\$0	\$0	\$0	\$0	\$0	\$0	\$0	\$0
INVESTMENT AGREEMENT EARNINGS	\$0	\$0	\$0	\$0	\$0	\$0	\$0	\$0
OTHER INVESTMENT EARNINGS	\$42	\$0	\$0	\$16	\$0	\$1	\$0	\$59
<u>MISCELLANEOUS</u>	<u>\$0</u>	<u>\$0</u>	<u>\$0</u>	<u>\$0</u>	<u>\$0</u>	<u>\$0</u>	<u>\$0</u>	<u>\$0</u>
TOTAL SOURCES	\$42	\$0	\$0	\$16	\$0	\$1	\$0	\$59
USES OF FUNDS								
INTEREST PAYMENTS	\$0	\$0	\$0	\$0	\$0	\$0	\$0	\$0
PRINCIPAL PAYMENTS	\$0	\$0	\$0	\$0	\$0	\$0	\$0	\$0
PUBLIC FACILITIES	\$0	\$0	\$0	\$0	\$0	\$0	\$0	\$0
PROFESSIONAL SERVICES	\$0	\$0	\$0	\$0	(\$50,000)	\$0	\$0	(\$50,000)
<u>MISCELLANEOUS</u>	<u>\$0</u>	<u>\$0</u>	<u>\$0</u>	<u>\$0</u>	<u>\$0</u>	<u>\$0</u>	<u>\$0</u>	<u>\$0</u>
TOTAL USES	\$0	\$0	\$0	\$0	(\$50,000)	\$0	\$0	(\$50,000)
TRANSFERS	(\$50,000)	\$0	\$0	\$0	\$50,000	\$0	\$0	\$0
ENDING BALANCE	\$1,594,828	\$6	\$0	\$485,258	\$10,014	\$20,392	\$0	\$2,110,498

RESERVE REQUIREMENT = \$484,706.26

COUNTY OF SAN BERNARDINO
IMPROVEMENT AREA NO. 1 OF COMMUNITY FACILITIES DISTRICT NO. 2006-1
(LYTLE CREEK NORTH)
SPECIAL TAX BONDS, SERIES 2010
July 2012

	SPECIAL TAX FUND	INTEREST ACCOUNT	PRINCIPAL ACCOUNT	RESERVE FUND	ADMIN EXPENSE FUND	WATER DISTRICT FACILITIES ACCOUNT	COUNTY FACILITIES ACCOUNT	TOTAL
BEGINNING BALANCE	\$1,594,828	\$6	\$0	\$485,258	\$10,014	\$20,392	\$0	\$2,110,498
SOURCES OF FUNDS								
BOND PROCEEDS	\$0	\$0	\$0	\$0	\$0	\$0	\$0	\$0
SPECIAL TAX RECEIPTS	\$1,992	\$0	\$0	\$0	\$0	\$0	\$0	\$1,992
INVESTMENT AGREEMENT EARNINGS	\$0	\$0	\$0	\$0	\$0	\$0	\$0	\$0
OTHER INVESTMENT EARNINGS	\$54	\$0	\$0	\$16	\$0	\$1	\$0	\$71
<u>MISCELLANEOUS</u>	<u>\$0</u>	<u>\$0</u>	<u>\$0</u>	<u>\$0</u>	<u>\$0</u>	<u>\$0</u>	<u>\$0</u>	<u>\$0</u>
TOTAL SOURCES	\$2,045	\$0	\$0	\$16	\$0	\$1	\$0	\$2,062
USES OF FUNDS								
INTEREST PAYMENTS	\$0	\$0	\$0	\$0	\$0	\$0	\$0	\$0
PRINCIPAL PAYMENTS	\$0	\$0	\$0	\$0	\$0	\$0	\$0	\$0
PUBLIC FACILITIES	\$0	\$0	\$0	\$0	\$0	\$0	\$0	\$0
PROFESSIONAL SERVICES	\$0	\$0	\$0	\$0	\$0	\$0	\$0	\$0
<u>MISCELLANEOUS</u>	<u>\$0</u>	<u>\$0</u>	<u>\$0</u>	<u>\$0</u>	<u>\$0</u>	<u>\$0</u>	<u>\$0</u>	<u>\$0</u>
TOTAL USES	\$0	\$0	\$0	\$0	\$0	\$0	\$0	\$0
TRANSFERS	\$0	\$0	\$0	\$0	\$0	\$0	\$0	\$0
ENDING BALANCE	\$1,596,873	\$6	\$0	\$485,274	\$10,014	\$20,393	\$0	\$2,112,561

RESERVE REQUIREMENT = \$484,706.26

PRINTED: 03/05/13
10:33

PAGE:4

COUNTY OF SAN BERNARDINO
IMPROVEMENT AREA NO. 1 OF COMMUNITY FACILITIES DISTRICT NO. 2006-1
(LYTLE CREEK NORTH)
SPECIAL TAX BONDS, SERIES 2010
August 2012

	SPECIAL TAX FUND	INTEREST ACCOUNT	PRINCIPAL ACCOUNT	RESERVE FUND	ADMIN EXPENSE FUND	WATER DISTRICT FACILITIES ACCOUNT	COUNTY FACILITIES ACCOUNT	TOTAL
BEGINNING BALANCE	\$1,596,873	\$6	\$0	\$485,274	\$10,014	\$20,393	\$0	\$2,112,561
SOURCES OF FUNDS								
BOND PROCEEDS	\$0	\$0	\$0	\$0	\$0	\$0	\$0	\$0
SPECIAL TAX RECEIPTS	\$0	\$0	\$0	\$0	\$0	\$0	\$0	\$0
INVESTMENT AGREEMENT EARNINGS	\$0	\$0	\$0	\$0	\$0	\$0	\$0	\$0
OTHER INVESTMENT EARNINGS	\$54	\$0	\$0	\$16	\$0	\$1	\$0	\$72
<u>MISCELLANEOUS</u>	<u>\$0</u>	<u>\$0</u>	<u>\$0</u>	<u>\$0</u>	<u>\$0</u>	<u>\$0</u>	<u>\$0</u>	<u>\$0</u>
TOTAL SOURCES	\$54	\$0	\$0	\$16	\$0	\$1	\$0	\$72
USES OF FUNDS								
INTEREST PAYMENTS	\$0	\$0	\$0	\$0	\$0	\$0	\$0	\$0
PRINCIPAL PAYMENTS	\$0	\$0	\$0	\$0	\$0	\$0	\$0	\$0
PUBLIC FACILITIES	\$0	\$0	\$0	\$0	\$0	\$0	\$0	\$0
PROFESSIONAL SERVICES	\$0	\$0	\$0	\$0	\$0	\$0	\$0	\$0
<u>MISCELLANEOUS</u>	<u>\$0</u>	<u>\$0</u>	<u>\$0</u>	<u>\$0</u>	<u>\$0</u>	<u>\$0</u>	<u>\$0</u>	<u>\$0</u>
TOTAL USES	\$0	\$0	\$0	\$0	\$0	\$0	\$0	\$0
TRANSFERS	(\$302,656)	\$177,656	\$125,000	\$0	\$0	\$0	\$0	\$0
ENDING BALANCE	\$1,294,271	\$177,662	\$125,000	\$485,290	\$10,015	\$20,393	\$0	\$2,112,632

RESERVE REQUIREMENT = \$484,706.26

COUNTY OF SAN BERNARDINO
IMPROVEMENT AREA NO. 1 OF COMMUNITY FACILITIES DISTRICT NO. 2006-1
(LYTLE CREEK NORTH)
SPECIAL TAX BONDS, SERIES 2010
September 2012

	SPECIAL TAX FUND	INTEREST ACCOUNT	PRINCIPAL ACCOUNT	RESERVE FUND	ADMIN EXPENSE FUND	WATER DISTRICT FACILITIES ACCOUNT	COUNTY FACILITIES ACCOUNT	TOTAL
BEGINNING BALANCE	\$1,294,271	\$177,662	\$125,000	\$485,290	\$10,015	\$20,393	\$0	\$2,112,632
SOURCES OF FUNDS								
BOND PROCEEDS	\$0	\$0	\$0	\$0	\$0	\$0	\$0	\$0
SPECIAL TAX RECEIPTS	\$0	\$0	\$0	\$0	\$0	\$0	\$0	\$0
INVESTMENT AGREEMENT EARNINGS	\$0	\$0	\$0	\$0	\$0	\$0	\$0	\$0
OTHER INVESTMENT EARNINGS	\$48	\$3	\$2	\$16	\$0	\$1	\$0	\$72
<u>MISCELLANEOUS</u>	<u>\$0</u>	<u>\$0</u>	<u>\$0</u>	<u>\$0</u>	<u>\$0</u>	<u>\$0</u>	<u>\$0</u>	<u>\$0</u>
TOTAL SOURCES	\$48	\$3	\$2	\$16	\$0	\$1	\$0	\$72
USES OF FUNDS								
INTEREST PAYMENTS	\$0	(\$177,656)	\$0	\$0	\$0	\$0	\$0	(\$177,656)
PRINCIPAL PAYMENTS	\$0	\$0	(\$125,000)	\$0	\$0	\$0	\$0	(\$125,000)
PUBLIC FACILITIES	\$0	\$0	\$0	\$0	\$0	\$0	\$0	\$0
PROFESSIONAL SERVICES	\$0	\$0	\$0	\$0	\$0	\$0	\$0	\$0
<u>MISCELLANEOUS</u>	<u>\$0</u>	<u>\$0</u>	<u>\$0</u>	<u>\$0</u>	<u>\$0</u>	<u>\$0</u>	<u>\$0</u>	<u>\$0</u>
TOTAL USES	\$0	(\$177,656)	(\$125,000)	\$0	\$0	\$0	\$0	(\$302,656)
TRANSFERS	\$0	\$0	\$0	\$0	\$0	\$0	\$0	\$0
ENDING BALANCE	\$1,294,320	\$9	\$3	\$485,307	\$10,015	\$20,394	\$0	\$1,810,047

RESERVE REQUIREMENT = \$484,706.26

**COUNTY OF SAN BERNARDINO
IMPROVEMENT AREA NO. 1 OF COMMUNITY FACILITIES DISTRICT NO. 2006-1
(LYTTLE CREEK NORTH)
SPECIAL TAX BONDS, SERIES 2010
October 2012**

	SPECIAL TAX FUND	INTEREST ACCOUNT	PRINCIPAL ACCOUNT	RESERVE FUND	ADMIN EXPENSE FUND	WATER DISTRICT FACILITIES ACCOUNT	COUNTY FACILITIES ACCOUNT	TOTAL
BEGINNING BALANCE	\$1,294,320	\$9	\$3	\$485,307	\$10,015	\$20,394	\$0	\$1,810,047
SOURCES OF FUNDS								
BOND PROCEEDS	\$0	\$0	\$0	\$0	\$0	\$0	\$0	\$0
SPECIAL TAX RECEIPTS	\$0	\$0	\$0	\$0	\$0	\$0	\$0	\$0
INVESTMENT AGREEMENT EARNINGS	\$0	\$0	\$0	\$0	\$0	\$0	\$0	\$0
OTHER INVESTMENT EARNINGS	\$42	\$1	\$0	\$16	\$0	\$1	\$0	\$60
<u>MISCELLANEOUS</u>	<u>\$0</u>	<u>\$0</u>	<u>\$0</u>	<u>\$0</u>	<u>\$0</u>	<u>\$0</u>	<u>\$0</u>	<u>\$0</u>
TOTAL SOURCES	\$42	\$1	\$0	\$16	\$0	\$1	\$0	\$60
USES OF FUNDS								
INTEREST PAYMENTS	\$0	\$0	\$0	\$0	\$0	\$0	\$0	\$0
PRINCIPAL PAYMENTS	\$0	\$0	\$0	\$0	\$0	\$0	\$0	\$0
PUBLIC FACILITIES	\$0	\$0	\$0	\$0	\$0	\$0	\$0	\$0
PROFESSIONAL SERVICES	\$0	\$0	\$0	\$0	\$0	\$0	\$0	\$0
<u>MISCELLANEOUS</u>	<u>\$0</u>	<u>\$0</u>	<u>\$0</u>	<u>\$0</u>	<u>\$0</u>	<u>\$0</u>	<u>\$0</u>	<u>\$0</u>
TOTAL USES	\$0	\$0	\$0	\$0	\$0	\$0	\$0	\$0
TRANSFERS	\$0	\$0	\$0	\$0	\$0	\$0	\$0	\$0
ENDING BALANCE	\$1,294,362	\$10	\$3	\$485,323	\$10,015	\$20,395	\$0	\$1,810,108

RESERVE REQUIREMENT = \$484,706.26

**COUNTY OF SAN BERNARDINO
IMPROVEMENT AREA NO. 1 OF COMMUNITY FACILITIES DISTRICT NO. 2006-1
(LYTTLE CREEK NORTH)
SPECIAL TAX BONDS, SERIES 2010
November 2012**

	SPECIAL TAX FUND	INTEREST ACCOUNT	PRINCIPAL ACCOUNT	RESERVE FUND	ADMIN EXPENSE FUND	WATER DISTRICT FACILITIES ACCOUNT	COUNTY FACILITIES ACCOUNT	TOTAL
BEGINNING BALANCE	\$1,294,362	\$10	\$3	\$485,323	\$10,015	\$20,395	\$0	\$1,810,108
SOURCES OF FUNDS								
BOND PROCEEDS	\$0	\$0	\$0	\$0	\$0	\$0	\$0	\$0
SPECIAL TAX RECEIPTS	\$10,776	\$0	\$0	\$0	\$0	\$0	\$0	\$10,776
INVESTMENT AGREEMENT EARNINGS	\$0	\$0	\$0	\$0	\$0	\$0	\$0	\$0
OTHER INVESTMENT EARNINGS	\$44	\$0	\$0	\$16	\$0	\$1	\$0	\$61
MISCELLANEOUS	\$0	\$0	\$0	\$0	\$0	\$0	\$0	\$0
TOTAL SOURCES	\$10,819	\$0	\$0	\$16	\$0	\$1	\$0	\$10,837
USES OF FUNDS								
INTEREST PAYMENTS	\$0	\$0	\$0	\$0	\$0	\$0	\$0	\$0
PRINCIPAL PAYMENTS	\$0	\$0	\$0	\$0	\$0	\$0	\$0	\$0
PUBLIC FACILITIES	\$0	\$0	\$0	\$0	\$0	\$0	\$0	\$0
PROFESSIONAL SERVICES	(\$1,002)	\$0	\$0	\$0	\$0	\$0	\$0	(\$1,002)
MISCELLANEOUS	\$0	\$0	\$0	\$0	\$0	\$0	\$0	\$0
TOTAL USES	(\$1,002)	\$0	\$0	\$0	\$0	\$0	\$0	(\$1,002)
TRANSFERS	(\$1,294,362)	\$0	\$0	\$0	\$0	(\$20,396)	\$1,314,758	\$0
ENDING BALANCE	\$9,818	\$10	\$3	\$485,339	\$10,016	\$0	\$1,314,758	\$1,819,943

RESERVE REQUIREMENT = \$484,706.26

COUNTY OF SAN BERNARDINO
IMPROVEMENT AREA NO. 1 OF COMMUNITY FACILITIES DISTRICT NO. 2006-1
(LYTLE CREEK NORTH)
SPECIAL TAX BONDS, SERIES 2010
December 2012

	SPECIAL TAX FUND	INTEREST ACCOUNT	PRINCIPAL ACCOUNT	RESERVE FUND	ADMIN EXPENSE FUND	WATER DISTRICT FACILITIES ACCOUNT	COUNTY FACILITIES ACCOUNT	TOTAL
BEGINNING BALANCE	\$9,818	\$10	\$3	\$485,339	\$10,016	\$0	\$1,314,758	\$1,819,943
SOURCES OF FUNDS								
BOND PROCEEDS	\$0	\$0	\$0	\$0	\$0	\$0	\$0	\$0
SPECIAL TAX RECEIPTS	\$311,203	\$0	\$0	\$0	\$0	\$0	\$0	\$311,203
INVESTMENT AGREEMENT EARNINGS	\$0	\$0	\$0	\$0	\$0	\$0	\$0	\$0
OTHER INVESTMENT EARNINGS	\$27	\$0	\$0	\$16	\$0	\$0	\$0	\$44
MISCELLANEOUS	\$0	\$0	\$0	\$0	\$0	\$0	\$0	\$0
TOTAL SOURCES	\$311,231	\$0	\$0	\$16	\$0	\$0	\$0	\$311,247
USES OF FUNDS								
INTEREST PAYMENTS	\$0	\$0	\$0	\$0	\$0	\$0	\$0	\$0
PRINCIPAL PAYMENTS	\$0	\$0	\$0	\$0	\$0	\$0	\$0	\$0
PUBLIC FACILITIES	\$0	\$0	\$0	\$0	\$0	\$0	\$0	\$0
PROFESSIONAL SERVICES	\$0	\$0	\$0	\$0	\$0	\$0	\$0	\$0
MISCELLANEOUS	\$0	\$0	\$0	\$0	\$0	\$0	\$0	\$0
TOTAL USES	\$0	\$0	\$0	\$0	\$0	\$0	\$0	\$0
TRANSFERS	\$0	\$0	\$0	\$0	\$0	\$0	\$0	\$0
ENDING BALANCE	\$321,048	\$10	\$3	\$485,355	\$10,016	\$0	\$1,314,758	\$2,131,190

RESERVE REQUIREMENT = \$484,706.26

COUNTY OF SAN BERNARDINO
IMPROVEMENT AREA NO. 1 OF COMMUNITY FACILITIES DISTRICT NO. 2006-1
(LYTLE CREEK NORTH)
SPECIAL TAX BONDS, SERIES 2010
January 2013

	SPECIAL TAX FUND	INTEREST ACCOUNT	PRINCIPAL ACCOUNT	RESERVE FUND	ADMIN EXPENSE FUND	WATER DISTRICT FACILITIES ACCOUNT	COUNTY FACILITIES ACCOUNT	TOTAL
BEGINNING BALANCE	\$321,048	\$10	\$3	\$485,355	\$10,016	\$0	\$1,314,758	\$2,131,190
SOURCES OF FUNDS								
BOND PROCEEDS	\$0	\$0	\$0	\$0	\$0	\$0	\$0	\$0
SPECIAL TAX RECEIPTS	\$5,231	\$0	\$0	\$0	\$0	\$0	\$0	\$5,231
INVESTMENT AGREEMENT EARNINGS	\$0	\$0	\$0	\$0	\$0	\$0	\$0	\$0
OTHER INVESTMENT EARNINGS	\$6	\$0	\$0	\$16	\$0	\$0	\$12	\$34
<u>MISCELLANEOUS</u>	<u>\$0</u>	<u>\$0</u>	<u>\$0</u>	<u>\$0</u>	<u>\$0</u>	<u>\$0</u>	<u>\$0</u>	<u>\$0</u>
TOTAL SOURCES	\$5,237	\$0	\$0	\$16	\$0	\$0	\$12	\$5,265
USES OF FUNDS								
INTEREST PAYMENTS	\$0	\$0	\$0	\$0	\$0	\$0	\$0	\$0
PRINCIPAL PAYMENTS	\$0	\$0	\$0	\$0	\$0	\$0	\$0	\$0
PUBLIC FACILITIES	\$0	\$0	\$0	\$0	\$0	\$0	\$0	\$0
PROFESSIONAL SERVICES	\$0	\$0	\$0	\$0	\$0	\$0	\$0	\$0
<u>MISCELLANEOUS</u>	<u>\$0</u>	<u>\$0</u>	<u>\$0</u>	<u>\$0</u>	<u>\$0</u>	<u>\$0</u>	<u>\$0</u>	<u>\$0</u>
TOTAL USES	\$0	\$0	\$0	\$0	\$0	\$0	\$0	\$0
TRANSFERS	\$0	\$0	\$0	\$0	\$0	\$0	\$0	\$0
ENDING BALANCE	\$326,285	\$10	\$3	\$485,371	\$10,016	\$0	\$1,314,769	\$2,136,455

RESERVE REQUIREMENT = \$484,706.26

COUNTY OF SAN BERNARDINO
IMPROVEMENT AREA NO. 1 OF COMMUNITY FACILITIES DISTRICT NO. 2006-1
(LYTLE CREEK NORTH)
SPECIAL TAX BONDS, SERIES 2010
February 2013

	SPECIAL TAX FUND	INTEREST ACCOUNT	PRINCIPAL ACCOUNT	RESERVE FUND	ADMIN EXPENSE FUND	WATER DISTRICT FACILITIES ACCOUNT	COUNTY FACILITIES ACCOUNT	TOTAL
BEGINNING BALANCE	\$326,285	\$10	\$3	\$485,371	\$10,016	\$0	\$1,314,769	\$2,136,455
SOURCES OF FUNDS								
BOND PROCEEDS	\$0	\$0	\$0	\$0	\$0	\$0	\$0	\$0
SPECIAL TAX RECEIPTS	\$2,462	\$0	\$0	\$0	\$0	\$0	\$0	\$2,462
INVESTMENT AGREEMENT EARNINGS	\$0	\$0	\$0	\$0	\$0	\$0	\$0	\$0
OTHER INVESTMENT EARNINGS	\$11	\$0	\$0	\$16	\$0	\$0	\$45	\$73
<u>MISCELLANEOUS</u>	<u>\$0</u>	<u>\$0</u>	<u>\$0</u>	<u>\$0</u>	<u>\$0</u>	<u>\$0</u>	<u>\$0</u>	<u>\$0</u>
TOTAL SOURCES	\$2,473	\$0	\$0	\$16	\$0	\$0	\$45	\$2,535
USES OF FUNDS								
INTEREST PAYMENTS	\$0	\$0	\$0	\$0	\$0	\$0	\$0	\$0
PRINCIPAL PAYMENTS	\$0	\$0	\$0	\$0	\$0	\$0	\$0	\$0
PUBLIC FACILITIES	\$0	\$0	\$0	\$0	\$0	\$0	\$0	\$0
PROFESSIONAL SERVICES	\$0	\$0	\$0	\$0	\$0	\$0	\$0	\$0
<u>MISCELLANEOUS</u>	<u>\$0</u>	<u>\$0</u>	<u>\$0</u>	<u>\$0</u>	<u>\$0</u>	<u>\$0</u>	<u>\$0</u>	<u>\$0</u>
TOTAL USES	\$0	\$0	\$0	\$0	\$0	\$0	\$0	\$0
TRANSFERS	(\$176,406)	\$176,406	\$0	\$0	\$0	\$0	\$0	\$0
ENDING BALANCE	\$152,352	\$176,416	\$3	\$485,388	\$10,017	\$0	\$1,314,814	\$2,138,990

RESERVE REQUIREMENT = \$484,706.26

COUNTY OF SAN BERNARDINO
IMPROVEMENT AREA NO. 1 OF COMMUNITY FACILITIES DISTRICT NO. 2006-1
(LYTLE CREEK NORTH)
SPECIAL TAX BONDS, SERIES 2010
March 2013

	SPECIAL TAX FUND	INTEREST ACCOUNT	PRINCIPAL ACCOUNT	RESERVE FUND	ADMIN EXPENSE FUND	WATER DISTRICT FACILITIES ACCOUNT	COUNTY FACILITIES ACCOUNT	TOTAL
BEGINNING BALANCE	\$152,352	\$176,416	\$3	\$485,388	\$10,017	\$0	\$1,314,814	\$2,138,990
SOURCES OF FUNDS								
BOND PROCEEDS	\$0	\$0	\$0	\$0	\$0	\$0	\$0	\$0
SPECIAL TAX RECEIPTS	\$5,111	\$0	\$0	\$0	\$0	\$0	\$0	\$5,111
INVESTMENT AGREEMENT EARNINGS	\$0	\$0	\$0	\$0	\$0	\$0	\$0	\$0
OTHER INVESTMENT EARNINGS	\$7	\$3	\$0	\$15	\$0	\$0	\$40	\$66
<u>MISCELLANEOUS</u>	<u>\$0</u>	<u>\$0</u>	<u>\$0</u>	<u>\$0</u>	<u>\$0</u>	<u>\$0</u>	<u>\$0</u>	<u>\$0</u>
TOTAL SOURCES	\$5,118	\$3	\$0	\$15	\$0	\$0	\$40	\$5,176
USES OF FUNDS								
INTEREST PAYMENTS	\$0	(\$176,406)	\$0	\$0	\$0	\$0	\$0	(\$176,406)
PRINCIPAL PAYMENTS	\$0	\$0	\$0	\$0	\$0	\$0	\$0	\$0
PUBLIC FACILITIES	\$0	\$0	\$0	\$0	\$0	\$0	\$0	\$0
PROFESSIONAL SERVICES	\$0	\$0	\$0	\$0	\$0	\$0	\$0	\$0
<u>MISCELLANEOUS</u>	<u>\$0</u>	<u>\$0</u>	<u>\$0</u>	<u>\$0</u>	<u>\$0</u>	<u>\$0</u>	<u>\$0</u>	<u>\$0</u>
TOTAL USES	\$0	(\$176,406)	\$0	\$0	\$0	\$0	\$0	(\$176,406)
TRANSFERS	\$0	\$0	\$0	\$0	\$0	\$0	\$0	\$0
ENDING BALANCE	\$157,470	\$13	\$3	\$485,403	\$10,017	\$0	\$1,314,854	\$1,967,760

RESERVE REQUIREMENT = \$484,706.26

EXHIBIT C

***County of San Bernardino
Improvement Area No. 1 of
Community Facilities District No. 2006-1***

***Special Tax Roll
Fiscal Year 2013-2014***

Exhibit C**County of San Bernardino IA No. 1 of CFD No. 2006-1
FY 2013-2014 Special Tax Levy**

<u>Assessor's Parcel Number</u>	<u>Zone</u>	<u>FY 2013-14 Special Tax</u>
0239-882-01	ZONE B	\$2,136.05
0239-882-02	ZONE B	\$2,017.26
0239-883-01	ZONE B	\$2,136.05
0239-883-02	ZONE B	\$2,017.26
0239-883-03	ZONE B	\$2,017.26
0239-883-04	ZONE B	\$2,136.05
0239-883-05	ZONE B	\$2,017.26
0239-883-09	ZONE B	\$2,017.26
0239-883-10	ZONE B	\$2,136.05
0239-883-11	ZONE B	\$2,017.26
0239-883-12	ZONE B	\$2,136.05
0239-883-13	ZONE B	\$2,017.26
0239-883-14	ZONE B	\$1,847.03
0239-883-15	ZONE B	\$1,917.03
0239-883-16	ZONE B	\$1,847.03
0239-883-17	ZONE B	\$1,847.03
0239-883-18	ZONE B	\$1,847.03
0239-883-19	ZONE B	\$1,847.03
0239-883-20	ZONE B	\$1,847.03
0239-883-21	ZONE B	\$1,847.03
0239-883-22	ZONE B	\$1,847.03
0239-883-23	ZONE B	\$1,847.03
0239-883-24	ZONE B	\$1,847.03
0239-883-25	ZONE B	\$1,847.03
0239-883-26	ZONE B	\$1,847.03
0239-883-27	ZONE B	\$1,847.03
0239-883-28	ZONE B	\$1,847.03
0239-883-29	ZONE B	\$1,847.03
0239-883-30	ZONE B	\$1,847.03
0239-883-31	ZONE B	\$1,847.03
0239-883-32	ZONE B	\$1,847.03
0239-883-57	ZONE B	\$2,017.26
0239-883-58	ZONE B	\$2,017.26
0239-883-59	ZONE B	\$2,017.26
0239-884-01	ZONE B	\$1,847.03
0239-884-02	ZONE B	\$1,847.03
0239-884-03	ZONE B	\$1,847.03
0239-884-04	ZONE B	\$1,847.03
0239-884-05	ZONE B	\$1,847.03
0239-884-06	ZONE B	\$1,847.03
0239-884-07	ZONE B	\$1,917.03
0239-884-08	ZONE B	\$1,847.03
0239-884-09	ZONE B	\$1,847.03
0239-884-10	ZONE A	\$1,673.63
0239-884-11	ZONE A	\$1,593.02
0239-884-12	ZONE A	\$1,650.82

Exhibit C

**County of San Bernardino IA No. 1 of CFD No. 2006-1
FY 2013-2014 Special Tax Levy**

<u>Assessor's Parcel Number</u>	<u>Zone</u>	<u>FY 2013-14 Special Tax</u>
0239-884-13	ZONE A	\$1,673.63
0239-884-14	ZONE A	\$1,650.82
0239-884-15	ZONE A	\$1,673.63
0239-884-16	ZONE A	\$1,593.02
0239-884-17	ZONE A	\$1,576.05
0239-884-18	ZONE A	\$1,650.82
0239-884-19	ZONE A	\$1,593.02
0239-884-20	ZONE A	\$1,650.82
0239-884-21	ZONE A	\$1,576.05
0239-884-22	ZONE A	\$1,593.02
0239-884-23	ZONE A	\$1,650.82
0239-884-24	ZONE A	\$1,673.63
0239-884-25	ZONE A	\$1,650.82
0239-884-26	ZONE A	\$1,673.63
0239-884-27	ZONE A	\$1,593.02
0239-884-28	ZONE A	\$1,673.63
0239-884-29	ZONE A	\$1,650.82
0239-884-30	ZONE A	\$1,673.63
0239-884-31	ZONE A	\$1,650.82
0239-884-32	ZONE A	\$1,593.02
0239-884-33	ZONE A	\$1,673.63
0239-884-34	ZONE A	\$1,650.82
0239-884-35	ZONE A	\$1,673.63
0239-884-36	ZONE A	\$1,593.02
0239-884-37	ZONE A	\$1,593.02
0239-884-38	ZONE A	\$1,650.82
0239-884-39	ZONE A	\$1,673.63
0239-884-40	ZONE A	\$1,576.05
0239-884-41	ZONE A	\$1,538.40
0239-884-42	ZONE A	\$1,538.40
0239-884-43	ZONE A	\$1,673.63
0239-884-44	ZONE A	\$1,538.40
0239-884-45	ZONE A	\$1,576.05
0239-884-46	ZONE A	\$1,593.02
0239-884-47	ZONE A	\$1,650.82
0239-884-48	ZONE A	\$1,576.05
0239-884-49	ZONE A	\$1,576.05
0239-884-50	ZONE A	\$1,593.02
0239-884-51	ZONE A	\$1,650.82
0239-884-52	ZONE A	\$1,576.05
0239-884-53	ZONE A	\$1,650.82
0239-884-54	ZONE A	\$1,576.05
0239-884-55	ZONE A	\$1,593.02
0239-884-56	ZONE A	\$1,650.82
0239-884-57	ZONE A	\$1,576.05
0239-884-58	ZONE A	\$1,593.02
0239-884-59	ZONE A	\$1,576.05

Exhibit C

**County of San Bernardino IA No. 1 of CFD No. 2006-1
FY 2013-2014 Special Tax Levy**

<u>Assessor's Parcel Number</u>	<u>Zone</u>	<u>FY 2013-14 Special Tax</u>
0239-885-01	ZONE A	\$1,673.63
0239-885-02	ZONE A	\$1,538.40
0239-885-03	ZONE A	\$1,673.63
0239-885-04	ZONE A	\$1,538.40
0239-885-05	ZONE A	\$1,650.82
0239-885-06	ZONE A	\$1,673.63
0239-885-07	ZONE A	\$1,650.82
0239-885-08	ZONE A	\$1,593.02
0239-885-09	ZONE A	\$1,650.82
0239-885-10	ZONE A	\$1,593.02
0239-885-11	ZONE A	\$1,576.05
0239-885-12	ZONE A	\$1,650.82
0239-885-13	ZONE A	\$1,593.02
0239-885-14	ZONE A	\$1,576.05
0239-885-15	ZONE A	\$1,650.82
0239-885-16	ZONE A	\$1,593.02
0239-885-17	ZONE A	\$1,650.82
0239-885-18	ZONE A	\$1,576.05
0239-885-19	ZONE A	\$1,650.82
0239-885-20	ZONE A	\$1,593.02
0239-885-21	ZONE A	\$1,593.02
0239-885-22	ZONE A	\$1,650.82
0239-885-23	ZONE A	\$1,576.05
0239-885-24	ZONE A	\$1,650.82
0239-885-25	ZONE A	\$1,576.05
0239-885-26	ZONE A	\$1,576.05
0239-885-27	ZONE A	\$1,650.82
0239-886-01	ZONE B	\$2,017.26
0239-886-02	ZONE B	\$2,136.05
0239-886-03	ZONE B	\$2,017.26
0239-886-04	ZONE B	\$2,017.26
0239-886-05	ZONE B	\$2,136.05
0239-886-06	ZONE B	\$2,017.26
0239-886-21	ZONE B	\$1,847.03
0239-886-22	ZONE B	\$1,847.03
0239-886-23	ZONE B	\$1,847.03
0239-886-24	ZONE B	\$1,847.03
0239-886-25	ZONE B	\$1,847.03
0239-886-26	ZONE B	\$1,847.03
0239-886-27	ZONE B	\$1,847.03
0239-886-28	ZONE B	\$1,847.03
0239-886-29	ZONE B	\$1,847.03
0239-886-30	ZONE B	\$1,847.03
0239-886-31	ZONE B	\$1,847.03
0239-886-32	ZONE B	\$1,847.03
0239-886-33	ZONE B	\$1,847.03
0239-886-34	ZONE B	\$1,847.03

Exhibit C

**County of San Bernardino IA No. 1 of CFD No. 2006-1
FY 2013-2014 Special Tax Levy**

<u>Assessor's Parcel Number</u>	<u>Zone</u>	<u>FY 2013-14 Special Tax</u>
0239-886-35	ZONE A	\$1,576.05
0239-886-36	ZONE A	\$1,673.63
0239-886-37	ZONE A	\$1,673.63
0239-886-38	ZONE A	\$1,593.02
0239-886-39	ZONE A	\$1,650.82
0239-886-40	ZONE A	\$1,593.02
0239-886-41	ZONE A	\$1,576.05
0239-886-42	ZONE A	\$1,650.82
0239-886-43	ZONE A	\$1,538.40
0239-886-44	ZONE A	\$1,673.63
0239-886-45	ZONE A	\$1,650.82
0239-886-46	ZONE A	\$1,538.40
0239-886-47	ZONE A	\$1,673.63
0239-886-48	ZONE A	\$1,650.82
0239-886-49	ZONE A	\$1,673.63
0239-886-50	ZONE A	\$1,650.82
0239-886-51	ZONE A	\$1,538.40
0239-886-52	ZONE A	\$1,673.63
0239-886-53	ZONE A	\$1,650.82
0239-892-01	ZONE A	\$1,673.63
0239-892-02	ZONE A	\$1,650.82
0239-892-03	ZONE A	\$1,593.02
0239-892-04	ZONE A	\$1,673.63
0239-892-05	ZONE A	\$1,650.82
0239-892-06	ZONE A	\$1,593.02
0239-892-07	ZONE A	\$1,673.63
0239-892-08	ZONE A	\$1,650.82
0239-892-09	ZONE A	\$1,593.02
0239-892-10	ZONE A	\$1,538.40
0239-892-11	ZONE A	\$1,576.05
0239-892-12	ZONE A	\$1,593.02
0239-892-13	ZONE A	\$1,538.40
0239-892-14	ZONE A	\$1,593.02
0239-892-15	ZONE A	\$1,576.05
0239-892-16	ZONE A	\$1,593.02
0239-892-17	ZONE A	\$1,576.05
0239-892-18	ZONE A	\$1,538.40
0239-892-19	ZONE A	\$1,593.02
0239-892-20	ZONE A	\$1,538.40
0239-892-21	ZONE A	\$1,593.02
0239-892-22	ZONE A	\$1,576.05
0239-892-23	ZONE A	\$1,593.02
0239-892-24	ZONE A	\$1,576.05
0239-892-25	ZONE A	\$1,593.02
0239-892-26	ZONE A	\$1,538.40
0239-892-27	ZONE A	\$1,576.05
0239-892-28	ZONE A	\$1,673.63

Exhibit C

**County of San Bernardino IA No. 1 of CFD No. 2006-1
FY 2013-2014 Special Tax Levy**

<u>Assessor's Parcel Number</u>	<u>Zone</u>	<u>FY 2013-14 Special Tax</u>
0239-892-29	ZONE A	\$1,650.82
0239-892-30	ZONE A	\$1,673.63
0239-892-31	ZONE A	\$1,650.82
0239-892-32	ZONE A	\$1,593.02
0239-892-33	ZONE A	\$1,673.63
0239-892-34	ZONE A	\$1,650.82
0239-892-35	ZONE A	\$1,593.02
0239-892-36	ZONE A	\$1,673.63
0239-892-37	ZONE A	\$1,650.82
0239-892-38	ZONE A	\$1,576.05
0239-892-39	ZONE A	\$1,593.02
0239-892-40	ZONE A	\$1,576.05
0239-892-41	ZONE A	\$1,593.02
0239-892-42	ZONE A	\$1,576.05
0239-892-43	ZONE A	\$1,538.40
0239-892-44	ZONE A	\$1,593.02
0239-892-45	ZONE A	\$1,576.05
0239-892-46	ZONE A	\$1,538.40
0239-892-47	ZONE A	\$1,593.02
0239-892-48	ZONE A	\$1,576.05
0239-892-49	ZONE A	\$1,576.05
0239-892-50	ZONE A	\$1,593.02
0239-892-51	ZONE A	\$1,538.40
0239-892-52	ZONE A	\$1,576.05
0239-892-53	ZONE A	\$1,593.02
0239-892-54	ZONE A	\$1,576.05
0239-892-55	ZONE A	\$1,593.02
0239-892-56	ZONE A	\$1,538.40
0239-892-57	ZONE A	\$1,593.02
0239-892-58	ZONE A	\$1,576.05
0239-892-59	ZONE A	\$1,538.40
0239-892-60	ZONE A	\$1,593.02
0239-892-61	ZONE A	\$1,576.05
0239-892-62	ZONE A	\$1,593.02
0239-892-63	ZONE A	\$1,576.05
0239-892-64	ZONE A	\$1,593.02
0239-892-65	ZONE A	\$1,538.40
0239-892-66	ZONE A	\$1,593.02
0239-892-67	ZONE A	\$1,538.40
0239-892-68	ZONE A	\$1,576.05
0239-892-69	ZONE A	\$1,593.02
0239-892-70	ZONE A	\$1,538.40
0239-892-71	ZONE A	\$1,576.05
0239-892-72	ZONE A	\$1,593.02
0239-892-73	ZONE A	\$1,593.02
0239-892-74	ZONE A	\$1,576.05
0239-892-75	ZONE A	\$1,593.02

Exhibit C

**County of San Bernardino IA No. 1 of CFD No. 2006-1
FY 2013-2014 Special Tax Levy**

<u>Assessor's Parcel Number</u>	<u>Zone</u>	<u>FY 2013-14 Special Tax</u>
0239-892-76	ZONE A	\$1,673.63
0239-892-77	ZONE A	\$1,650.82
0239-892-78	ZONE A	\$1,673.63
0239-892-79	ZONE A	\$1,593.02
0239-892-80	ZONE A	\$1,650.82
0239-892-81	ZONE A	\$1,538.40
0239-892-82	ZONE A	\$1,576.05
0239-892-83	ZONE A	\$1,593.02
0239-892-84	ZONE A	\$1,538.40
0239-892-85	ZONE A	\$1,593.02
0239-892-86	ZONE A	\$1,576.05
0239-892-87	ZONE A	\$1,593.02
0239-892-88	ZONE A	\$1,538.40
0239-892-89	ZONE A	\$1,576.05
0239-892-90	ZONE A	\$1,538.40
0239-892-91	ZONE A	\$1,593.02
0239-892-92	ZONE A	\$1,538.40
0239-893-01	ZONE A	\$1,593.02
0239-893-02	ZONE A	\$1,538.40
0239-893-03	ZONE A	\$1,576.05
0239-893-04	ZONE A	\$1,593.02
0239-893-05	ZONE A	\$1,576.05
0239-893-06	ZONE A	\$1,593.02
0239-893-08	ZONE A	\$1,538.40
0239-893-09	ZONE A	\$1,576.05
0239-893-10	ZONE A	\$1,593.02
0239-893-11	ZONE A	\$1,538.40
0239-893-12	ZONE A	\$1,593.02
0239-893-13	ZONE A	\$1,576.05
0239-893-14	ZONE A	\$1,576.05
0239-893-15	ZONE A	\$1,593.02
0239-893-16	ZONE A	\$1,576.05
0239-893-17	ZONE A	\$1,538.40
0239-893-18	ZONE A	\$1,593.02
0239-893-19	ZONE A	\$1,576.05
0239-893-20	ZONE A	\$1,576.05
0239-893-21	ZONE A	\$1,593.02
0239-893-22	ZONE A	\$1,593.02
0239-893-23	ZONE A	\$1,576.05
0239-893-24	ZONE A	\$1,538.40
0239-893-25	ZONE A	\$1,673.63
0239-893-26	ZONE A	\$1,593.02
0239-893-27	ZONE A	\$1,650.82
0239-893-28	ZONE A	\$1,673.63
0239-893-29	ZONE A	\$1,593.02
0239-893-30	ZONE A	\$1,593.02
0239-893-31	ZONE A	\$1,538.40

Exhibit C

**County of San Bernardino IA No. 1 of CFD No. 2006-1
FY 2013-2014 Special Tax Levy**

<u>Assessor's Parcel Number</u>	<u>Zone</u>	<u>FY 2013-14 Special Tax</u>
0239-893-32	ZONE A	\$1,576.05
0239-893-33	ZONE A	\$1,538.40
0239-893-34	ZONE A	\$1,593.02
0239-893-35	ZONE A	\$1,576.05
0239-893-36	ZONE A	\$1,593.02
0239-893-37	ZONE A	\$1,538.40
0239-893-38	ZONE A	\$1,593.02
0239-893-39	ZONE A	\$1,650.82
0239-893-40	ZONE A	\$1,673.63
0239-893-41	ZONE A	\$1,593.02
0239-893-42	ZONE A	\$1,650.82
0239-893-43	ZONE A	\$1,538.40
0239-893-44	ZONE A	\$1,576.05
0239-893-45	ZONE A	\$1,650.82
0239-893-46	ZONE A	\$1,538.40
0239-893-47	ZONE A	\$1,650.82
0239-893-48	ZONE A	\$1,673.63
0239-893-49	ZONE A	\$1,650.82
0239-893-50	ZONE A	\$1,673.63
0239-893-51	ZONE A	\$1,593.02
0239-893-52	ZONE A	\$1,673.63
0239-893-53	ZONE A	\$1,650.82
0239-893-54	ZONE A	\$1,673.63
0239-893-55	ZONE A	\$1,650.82
0239-893-56	ZONE A	\$1,673.63
0239-893-57	ZONE A	\$1,593.02
0239-893-58	ZONE B	\$1,847.03
0239-893-59	ZONE B	\$1,917.03
0239-893-60	ZONE B	\$1,847.03
0239-893-61	ZONE B	\$1,917.03
0239-893-62	ZONE B	\$2,017.26
0239-893-63	ZONE B	\$2,017.26
0239-893-64	ZONE B	\$2,136.05
0239-894-01	ZONE B	\$1,917.03
0239-894-02	ZONE B	\$1,847.03
0239-894-03	ZONE B	\$1,917.03
0239-894-22	ZONE B	\$1,847.03
0239-894-23	ZONE B	\$1,847.03
0239-894-24	ZONE B	\$1,917.03
0239-894-29	ZONE B	\$1,847.03
0239-894-30	ZONE B	\$1,847.03
0239-894-31	ZONE B	\$1,847.03
0239-894-32	ZONE B	\$1,847.03
0239-894-33	ZONE B	\$1,847.03
0239-894-34	ZONE B	\$1,847.03
0239-894-35	ZONE B	\$1,917.03
0239-894-36	ZONE B	\$1,847.03

Exhibit C**County of San Bernardino IA No. 1 of CFD No. 2006-1
FY 2013-2014 Special Tax Levy**

<u>Assessor's Parcel Number</u>	<u>Zone</u>	<u>FY 2013-14 Special Tax</u>
0239-894-37	ZONE B	\$1,917.03
0239-894-38	ZONE B	\$1,917.03
0239-894-39	ZONE B	\$1,847.03
0239-894-40	ZONE B	\$1,847.03
0239-894-41	ZONE B	\$1,917.03
0239-894-42	ZONE B	\$1,847.03
0239-894-43	ZONE B	\$1,847.03
0239-894-44	ZONE B	\$1,917.03
0239-894-45	ZONE B	\$1,847.03
0239-894-46	ZONE B	\$1,917.03
0239-894-47	ZONE B	\$1,847.03
0239-894-48	ZONE B	\$1,847.03
0239-894-49	ZONE B	\$1,847.03
0239-895-09	ZONE B	\$2,017.26
0239-895-10	ZONE B	\$2,017.26
0239-895-11	ZONE B	\$2,136.05
0239-895-12	ZONE B	\$2,017.26
0239-895-13	ZONE B	\$2,136.05
0239-895-14	ZONE B	\$2,017.26
0239-895-15	ZONE B	\$1,847.03
0239-895-17	ZONE B	\$2,136.05
0239-895-18	ZONE B	\$2,017.26
0239-895-19	ZONE B	\$2,017.26
0239-896-01	ZONE A	\$1,593.02
0239-896-02	ZONE A	\$1,576.05
0239-896-03	ZONE A	\$1,593.02
0239-896-04	ZONE A	\$1,576.05
0239-896-05	ZONE A	\$1,593.02
0239-896-06	ZONE A	\$1,538.40
0239-896-07	ZONE A	\$1,593.02
0239-896-08	ZONE A	\$1,576.05
0239-896-09	ZONE A	\$1,538.40
0239-896-10	ZONE A	\$1,593.02
0239-896-11	ZONE A	\$1,673.63
0239-896-12	ZONE A	\$1,593.02
0239-896-13	ZONE A	\$1,673.63
0239-896-14	ZONE A	\$1,650.82
0239-896-15	ZONE A	\$1,673.63
0239-896-16	ZONE A	\$1,650.82
0239-896-17	ZONE A	\$1,673.63
0239-896-18	ZONE A	\$1,650.82
0239-896-19	ZONE A	\$1,673.63
0239-896-20	ZONE A	\$1,650.82
0239-896-21	ZONE A	\$1,673.63
0239-896-22	ZONE A	\$1,593.02
0239-896-23	ZONE A	\$1,538.40
0239-896-24	ZONE A	\$1,576.05

Exhibit C**County of San Bernardino IA No. 1 of CFD No. 2006-1
FY 2013-2014 Special Tax Levy**

<u>Assessor's Parcel Number</u>	<u>Zone</u>	<u>FY 2013-14 Special Tax</u>
0239-896-25	ZONE A	\$1,538.40
0239-896-26	ZONE A	\$1,576.05
0239-896-27	ZONE A	\$1,593.02
0239-896-28	ZONE A	\$1,538.40
0239-896-29	ZONE A	\$1,593.02
0239-896-30	ZONE A	\$1,673.63
0239-896-31	ZONE A	\$1,650.82
0239-896-32	ZONE A	\$1,593.02
0239-896-33	ZONE A	\$1,673.63
0239-896-34	ZONE A	\$1,650.82
0239-896-35	ZONE A	\$1,673.63
0239-896-36	ZONE A	\$1,593.02
0239-896-37	ZONE A	\$1,673.63
0239-896-38	ZONE A	\$1,650.82
0239-896-39	ZONE A	\$1,673.63
0239-896-40	ZONE A	\$1,593.02
0239-896-41	ZONE A	\$1,576.05
0239-896-42	ZONE A	\$1,593.02
0239-896-43	ZONE A	\$1,538.40
0239-896-44	ZONE A	\$1,593.02
0239-896-45	ZONE A	\$1,576.05
0239-896-46	ZONE A	\$1,593.02
Total FY 2013-14 Special Tax Levy		\$671,120.53
Total Number of Parcels Taxed		397