

**COUNTY OF SAN BERNARDINO  
IMPROVEMENT AREA NO. 1 OF  
COMMUNITY FACILITIES DISTRICT  
No. 2006-1  
(LYTLE CREEK NORTH)**

**May 9, 2014**

*Public Finance*  
*Public Private Partnerships*  
*Urban Economics*

---

*Newport Beach*  
Fresno  
Riverside  
San Francisco  
Chicago  
Dallas

**ADMINISTRATION REPORT  
FISCAL YEAR 2014-2015**

**COUNTY OF SAN BERNARDINO  
IMPROVEMENT AREA NO. 1 OF  
COMMUNITY FACILITIES DISTRICT NO. 2006-1  
(LYTLE CREEK NORTH)**

**Prepared for**

**COUNTY OF SAN BERNARDINO**  
157 W. Fifth Street  
San Bernardino, California 92371

**Prepared by**

**DAVID TAUSSIG & ASSOCIATES, INC.**  
5000 Birch Street, Suite 6000  
Newport Beach, California 92660  
(949) 955-1500

## *Table of Contents*

Section	Page
<i>I. Introduction</i> .....	1
<i>II. Special Tax Classifications and Development Update</i> .....	2
Special Tax Classifications .....	2
Development Update .....	2
<i>III. Sources and Uses of Funds</i> .....	4
<i>IV. Fiscal Year 2013-2014 Special Tax Levy</i> .....	5
<i>V. Fiscal Year 2014-2015 Special Tax Requirement</i> .....	6
<i>VI. Method of Apportionment</i> .....	9
Maximum Special Tax Rates .....	9
Apportionment of Special Taxes .....	9

### **EXHIBITS**

- Exhibit A: Boundary Map*  
*Exhibit B: Summary of Transactions to Funds and Accounts from 4/1/2013 to 4/30/2014*  
*Exhibit C: Special Tax Roll Fiscal Year 2014-2015*

---

# ***I. Introduction***

---

This report presents the findings of the research and financial analysis performed by David Taussig & Associates, Inc. to determine the special tax requirement for Improvement Area No. 1 (“IA No. 1”) of Community Facilities District No. 2006-1 (Lytle Creek North) (“CFD No. 2006-1”) of the County of San Bernardino (“the County”) for fiscal year 2014-2015.

CFD No. 2006-1 is a legally constituted governmental entity established under the Mello-Roos Community Facilities Act of 1982, (the "Act") as amended. The Act provides an alternative method for the financing of certain public facilities and services. Specifically, IA No. 1 of CFD No. 2006-1 is authorized to issue up to \$28,000,000 in bonds. IA No. 1 issued \$7,130,000 in bonds in November 2010 (the “2010 Bonds”) and \$2,345,000 in bonds in November 2013 (the “2013 Bonds”) to finance certain street, water, sewer, storm drain, flood control, and park and recreational improvements. Additional bonds are expected to be issued as development proceeds within IA No. 1. A map showing the property in IA No. 1 is included in Exhibit A.

In calculating the special tax liability for fiscal year 2014-2015, this report examines the financial obligations of the current fiscal year and analyzes the level of development within IA No. 1.

This report is organized into the following sections:

## Section II

Section II provides an update of the development activity occurring within IA No. 1.

## Section III

Section III examines the financial activity in the funds and accounts established pursuant to the bond indentures for the Series 2010 Bonds dated November 1, 2010, and for the Series 2013 Bonds dated November 1, 2013, between IA No. 1 of CFD No. 2006-1 and the trustee. A year-to-date summary illustrating all disbursements, special tax receipts and interest earnings of the Bonds is provided.

## Section IV

Section IV analyzes the previous year's special tax levy.

## Section V

Section V determines the financial obligations of IA No. 1 for fiscal year 2014-2015.

## Section VI

Section VI reviews the methodology used to apportion the special tax requirement to Developed Property and Undeveloped Property. A table of the 2014-2015 special tax rates for Developed Property and Undeveloped Property is included.

---

## ***II. Special Tax Classifications and Development Update***

---

### **Special Tax Classifications**

The methodology employed to calculate and apportion the special tax is contained in a document entitled the Rate and Method of Apportionment. The Rate and Method of Apportionment defines two primary categories of property, namely “Developed Property” and “Undeveloped Property”. For both Zone A and Zone B of IA No. 1, the category of Developed Property is in turn divided into five separate special tax classifications which vary with dwelling unit size for residential development and acreage for non-residential development.

Developed Property is distinguished from Undeveloped Property by the issuance of a building permit. Specifically, property for which a building permit was issued between January 2, 2006 and March 1 of the prior Fiscal Year will be classified as Developed Property in the following fiscal year. For example, all property in IA No. 1 for which a building permit was issued between January 2, 2006 and March 1, 2014, will be classified as Developed Property in fiscal year 2014-2015.

### **Development Update**

Review of the County of San Bernardino’s building permit records indicate that between January 2, 2006 and March 1, 2014 building permits for 290 units of residential property in Zone A and 134 units of residential property in Zone B had been issued within IA No. 1. A total of 20.93 acres in IA No. 1 are considered Undeveloped Property. In addition, four tract maps had been recorded as of January 1, 2014, and there is no unmapped property in IA No. 1. The tables below indicate tract maps recorded as of January 1, 2014 and the current amount of Developed Property and Undeveloped Property within IA No. 1.

#### **Improvement Area No. 1 Tract Maps Recorded as of January 1, 2014**

<b>Tract Map No.</b>	<b>Zone</b>	<b>Number of Taxable Lots</b>	<b>Date of Recordation</b>
16977	A	178 units	August 2006
16977-1	B	98 units	August 2006
16977-2	B	148 units	August 2006
16977-3	A	112 units	August 2006
Total	NA	536 units	NA

**Improvement Area No. 1  
Cumulative Developed Property and  
Undeveloped Property**

**Zone A**

<b>Land Use Class</b>	<b>Description</b>	<b>Residential Floor Area</b>	<b>Number of Units/Acres</b>
1	Residential Property	> 2,500 s.f.	48 units
2	Residential Property	2,350 – 2,500 s.f.	54 units
3	Residential Property	2,175 – 2,349 s.f.	86 units
4	Residential Property	2,050 – 2,174 s.f.	60 units
5	Residential Property	< 2,050 s.f.	42 units
6	Non-Residential Property	NA	0 acres
NA	Undeveloped Property	NA	0.00 acres

**Zone B**

<b>Land Use Class</b>	<b>Description</b>	<b>Residential Floor Area</b>	<b>Number of Units/Acres</b>
1	Residential Property	> 3,700 s.f.	11 units
2	Residential Property	3,450 – 3,700 s.f.	0 units
3	Residential Property	3,200 – 3,449 s.f.	22 units
4	Residential Property	3,000 – 3,199 s.f.	13 units
5	Residential Property	< 3,000 s.f.	88 units
6	Non-Residential Property	NA	0 acres
NA	Undeveloped Property	NA	20.93 acres

---

### ***III. Sources and Uses of Funds***

---

IA No. 1 Series 2010 and Series 2013's sources of funds in the funds held by Trustee from April 1, 2013 through April 30, 2014 totaled \$3,273,339. This consisted of \$2,280,322 in Series 2013 bond proceeds, \$992,049 in special tax receipts, and \$967 in investment earnings.

Total uses of funds in the funds held by Trustee for the time period mentioned above totaled \$1,556,006. Interest and principal payments on the bonds equaled \$386,626 and \$130,000, respectively. Payments for acquisition and/or construction of school facilities equaled \$870,353. Payments for professional services including costs of issuance on the 2013 Bonds equaled \$169,026.

A more detailed analysis of all transactions within the Series 2010 and Series 2013 funds and accounts for the time period mentioned above is included as Exhibit B.

As of April 30, 2014, the various funds and accounts established for the Series 2010 and Series 2013 Bonds had the following balances:

Special Tax Fund	\$633,025
Redemption Fund [1]	\$0
Interest Account	\$13
Principal Account	\$4
Administrative Expenses Account	\$7,399
Series 2010 Reserve Fund	\$485,585 [2]
Series 2010 County Facilities Account	\$815,284
Series 2013 Reserve Fund	\$130,945 [2]
Series 2013 Costs of Issuance	\$8,596
Series 2013 County Facilities Account	\$1,604,241
[1] Fund is held by the County of San Bernardino. DTA has no statements on file. Balance as of May 2, 2014 provided by County.	
[2] Based on Series 2013 Official Statement, the combined Series 2010 & 2013 Reserve Requirement is equal to \$616,444.	

---

#### ***IV. Fiscal Year 2013-2014 Special Tax Levy***

---

The total special tax levy for fiscal year 2013-2014 equaled \$671,121. As of May 8, 2014, \$669,528 in special taxes due for fiscal year 2013-2014 had been collected by the County, resulting in a delinquency rate of approximately 0.24%. Of the 397 parcels that were subject to the special tax, one failed to pay some or all of his/her fiscal year 2013-2014 special taxes in a timely manner.



---

## ***V. Fiscal Year 2014-2015 Special Tax Requirement***

---

The Assigned Special Tax can be levied on Developed Property to pay for debt service on the Bonds, the direct construction or acquisition of facilities eligible to be financed by IA No. 1, and annual administrative expenses as provided for by the RMA for IA No. 1. At the time of the issuance of the 2010 Bonds and 2013 Bonds, the County determined that it would levy special taxes on Developed Property at 53.03% of the Assigned Special Tax so long as that amount generates sufficient revenues to pay for debt service and administrative expenses. Any additional special tax revenues will be used to pay directly for facilities. For fiscal year 2014-2015, the special tax requirement for IA No. 1 is equal to \$720,990 and is calculated as follows:

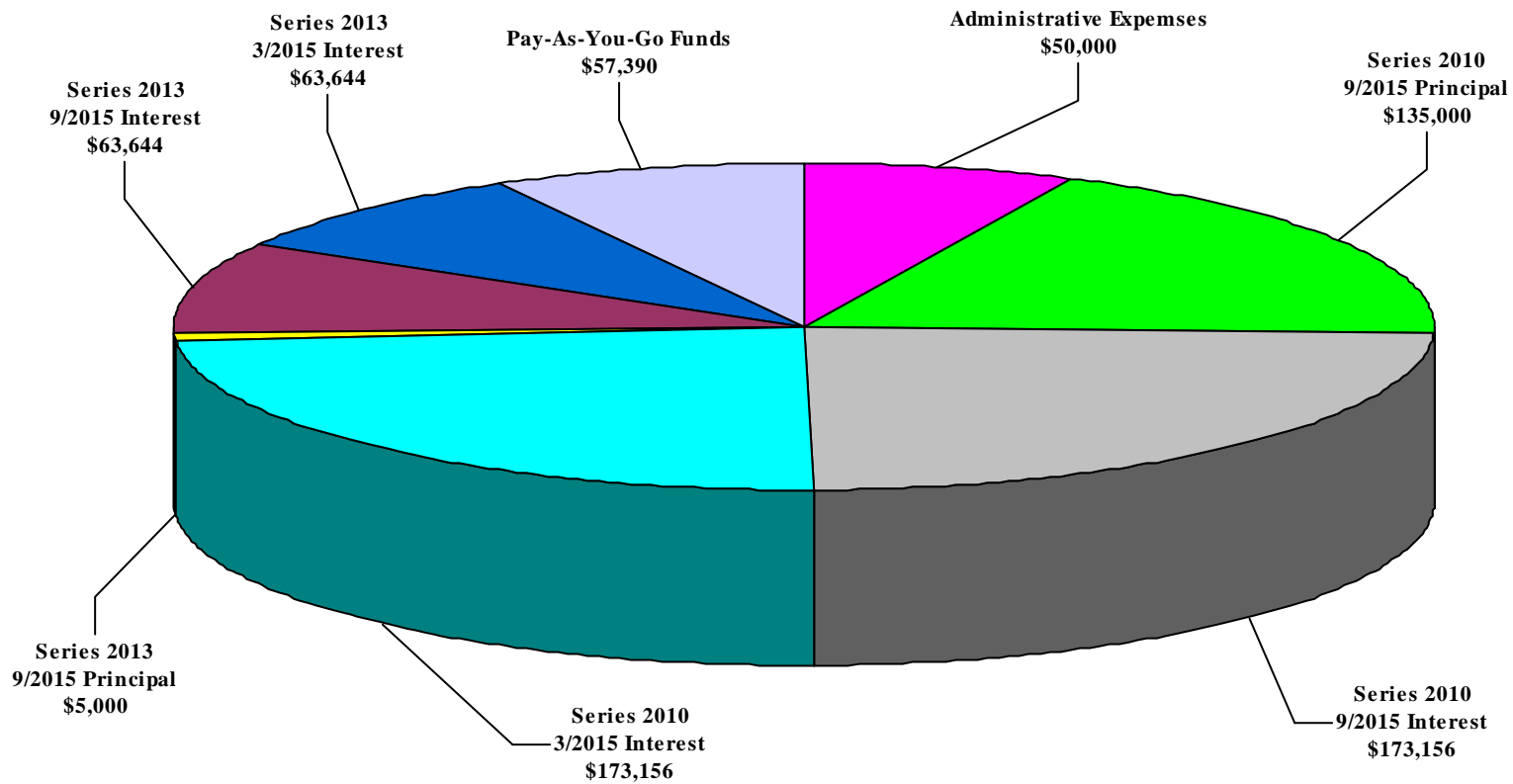
**County of San Bernardino**  
**Improvement Area No. 1 of Community Facilities District No. 2006-1**  
**(Lytle Creek North)**  
**Fiscal Year 2014-2015 Special Tax Requirement**

<b>Fund Balances as of April 30, 2014</b>		<b>\$643,708</b>
Special Tax Fund	\$633,025	
County-Held Redemption Fund [1]	\$0	
Administrative Expense Account	\$7,399	
Interest Account	\$13	
Principal Account	\$4	
Surplus Monies in the Reserve Fund	\$87	
Estimated 2nd Installment FY 2013-2014 Taxes [2]	\$3,180	
<b>Remaining Fiscal Year 2013-2014 Obligations</b>		<b>(\$643,708)</b>
Series 2010 Interest Due September 1, 2014	(\$174,863)	
Series 2010 Principal Due September 1, 2014	(\$130,000)	
Series 2013 Interest Due September 1, 2014	(\$63,644)	
Series 2013 Principal Due September 1, 2014	(\$0)	
Administrative Expenses	(\$50,000)	
Pay-As-You-Go Funds [3]	(\$225,202)	
<b>Fiscal Year 2013-2014 Surplus / (Draw on Reserve Fund)</b>		<b>\$0</b>
<b>Fiscal Year 2014-2015 Obligations</b>		<b>(\$720,990)</b>
Series 2010 Interest Due March 1, 2015	(\$173,156)	
Series 2010 Interest Due September 1, 2015	(\$173,156)	
Series 2010 Principal Due September 1, 2015	(\$135,000)	
Series 2013 Interest Due March 1, 2015	(\$63,644)	
Series 2013 Interest Due September 1, 2015	(\$63,644)	
Series 2013 Principal Due September 1, 2015	(\$5,000)	
Administrative Expenses	(\$50,000)	
Pay-As-You-Go Funds [3]	(\$57,390)	
<b>Fiscal Year 2014-2015 Special Tax Requirement</b>		<b>\$720,990</b>
[1] As of May 2, 2014 per County.		
[2] Based on amount not yet apportioned for the 2 <sup>nd</sup> installment of fiscal year 2013-2014 less delinquent special taxes and County collection fee.		
[3] Pay-as-you-go amount is an estimate based on the expected Annual Special Tax receipts.		

The components of the fiscal year 2014-2015 special tax requirement are shown graphically on the following page.

**County of San Bernardino  
 IA No. 1 of Community Facilities District No. 2006-1  
 (Lytle Creek North)**

**Fiscal Year 2014-2015 Special Tax Levy**



**Total Special Tax Requirement = \$720,990**

---

## ***VI. Method of Apportionment***

---

### **Maximum Special Tax Rates**

The amount of special taxes that IA No. 1 may levy is strictly limited by the maximum rates set forth in Section C of the Rate and Method of Apportionment.<sup>1</sup>

The fiscal year 2014-2015 maximum special tax rates for Developed property are shown in the tables on the following page. The maximum special tax rates do not escalate.

### **Apportionment of Special Taxes**

The special tax that is apportioned to each parcel is determined through the application of Section D of the Rate and Method of Apportionment. The Board of Supervisors shall first determine the Special Tax Requirement. Section D apportions the special tax requirement in four steps that prioritize the order in which Developed Property and Undeveloped Property are taxed.

The first step states that the special tax shall be levied against each parcel of Developed Property at up to 100% of the applicable Assigned Special Tax until the amount of the Special Taxes equals the Special Tax Requirement. If the special taxes raised pursuant to the first step are less than the special tax requirement, then the second step is applied. The second step states that the special tax shall be levied against each parcel of Undeveloped Property at up to 100 percent of the maximum special tax for Undeveloped Property.

The third and fourth steps are designed to accommodate changes in land use and are intended to be used only as a last resort. Since actual land uses have not substantially deviated from the original projections, these steps are not necessary.

Application of the first step generates special tax revenues of \$1,359,591 from Developed Property which is more than sufficient to meet all of the obligations for IA No. 1 as outlined in Section IV. As stated earlier, the County has decided to limit the fiscal year 2014-2015 special tax levy to 53.03% of the Assigned Special Tax which generates an amount equal to the fiscal year 2014-2015 Special Tax Requirement of \$720,990.

The fiscal year 2014-2015 maximum and actual special tax rates are shown for Developed Property in the following table. The Special Tax Roll, which lists the actual special tax levied against each parcel, is shown in Exhibit C.

---

1 Technically, Section C states that the maximum special tax for a parcel of Developed Property is equal to the greater of (i) the "Backup Special Tax" or (ii) the Assigned Special Tax. The Backup Special Tax was established for the contingency of a shortfall in revenues resulting from significant changes in development densities. The contingency for which the Backup Special Tax was established does not exist and hence, all discussion of maximum tax rates for Developed Property focuses on the Assigned Special Tax.

**County of San Bernardino  
Fiscal Year 2014-2015  
Maximum and Actual Special Taxes  
Improvement Area No. 1**

**Zone A**

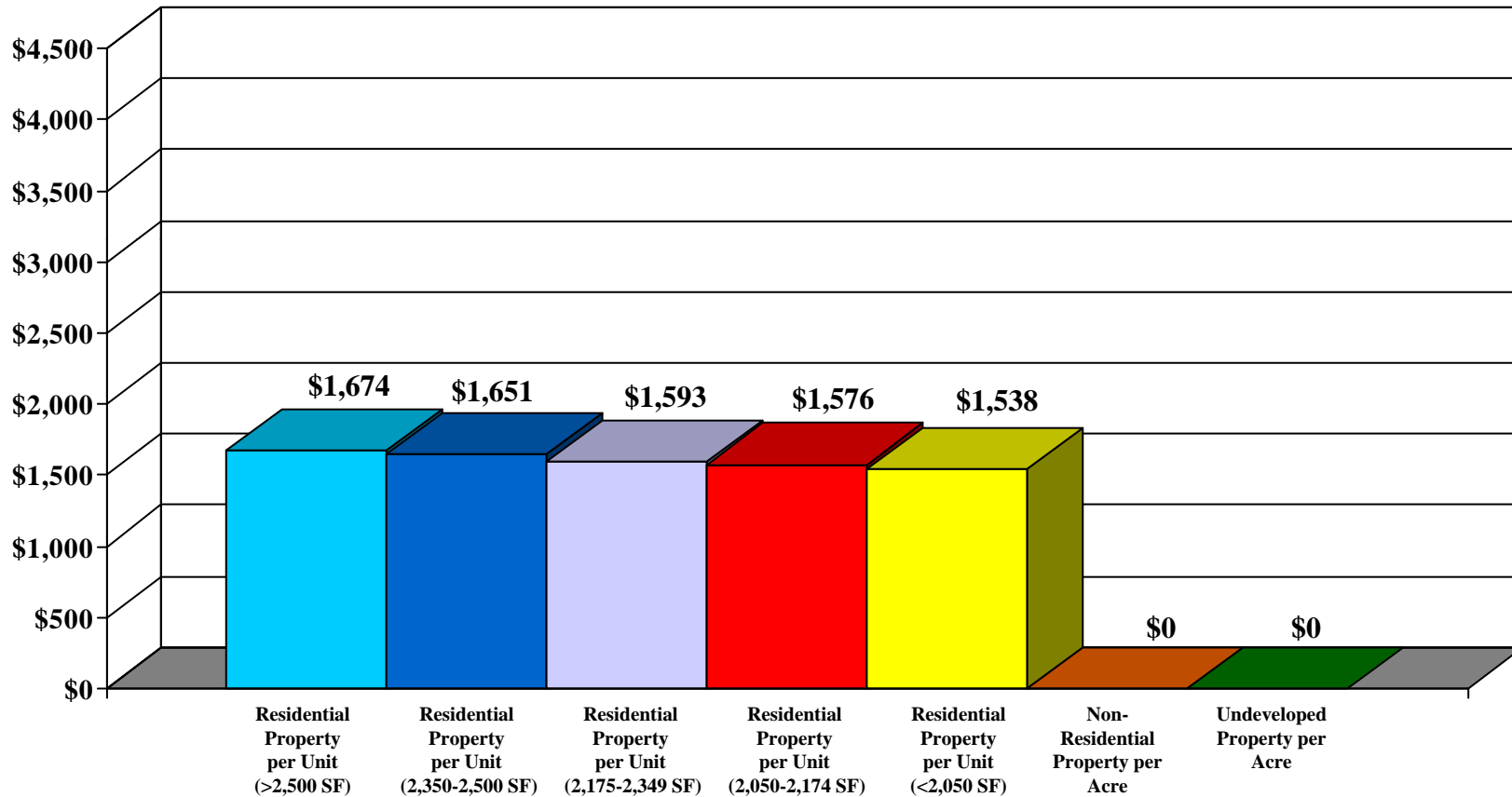
<b>Land Use Class</b>	<b>Description</b>	<b>Residential Floor Area</b>	<b>Maximum Special Tax</b>	<b>FY 2014-2015 Actual Special Tax</b>
1	Residential Property	> 2,500 s.f.	\$3,156.00 per unit	\$1,673.63 per unit
2	Residential Property	2,350 – 2,500 s.f.	\$3,113.00 per unit	\$1,650.82 per unit
3	Residential Property	2,175 – 2,349 s.f.	\$3,004.00 per unit	\$1,593.02 per unit
4	Residential Property	2,050 – 2,174 s.f.	\$2,972.00 per unit	\$1,576.05 per unit
5	Residential Property	< 2,050 s.f.	\$2,901.00 per unit	\$1,538.40 per unit
6	Non-Residential Property	NA	\$26,775.00 per Acre	\$0.00 per acre

**Zone B**

<b>Land Use Class</b>	<b>Description</b>	<b>Residential Floor Area</b>	<b>Maximum Special Tax</b>	<b>FY 2014-2014 Actual Special Tax</b>
1	Residential Property	> 3,700 s.f.	\$4,028.00 per unit	\$2,136.05 per unit
2	Residential Property	3,450 – 3,700 s.f.	\$3,872.00 per unit	\$0.00 per unit
3	Residential Property	3,200 – 3,449 s.f.	\$3,804.00 per unit	\$2,017.26 per unit
4	Residential Property	3,000 – 3,199 s.f.	\$3,615.00 per unit	\$1,917.03 per unit
5	Residential Property	< 3,000 s.f.	\$3,483.00 per unit	\$1,847.03 per unit
6	Non-Residential Property	NA	\$22,890.00 per Acre	\$0.00 per acre

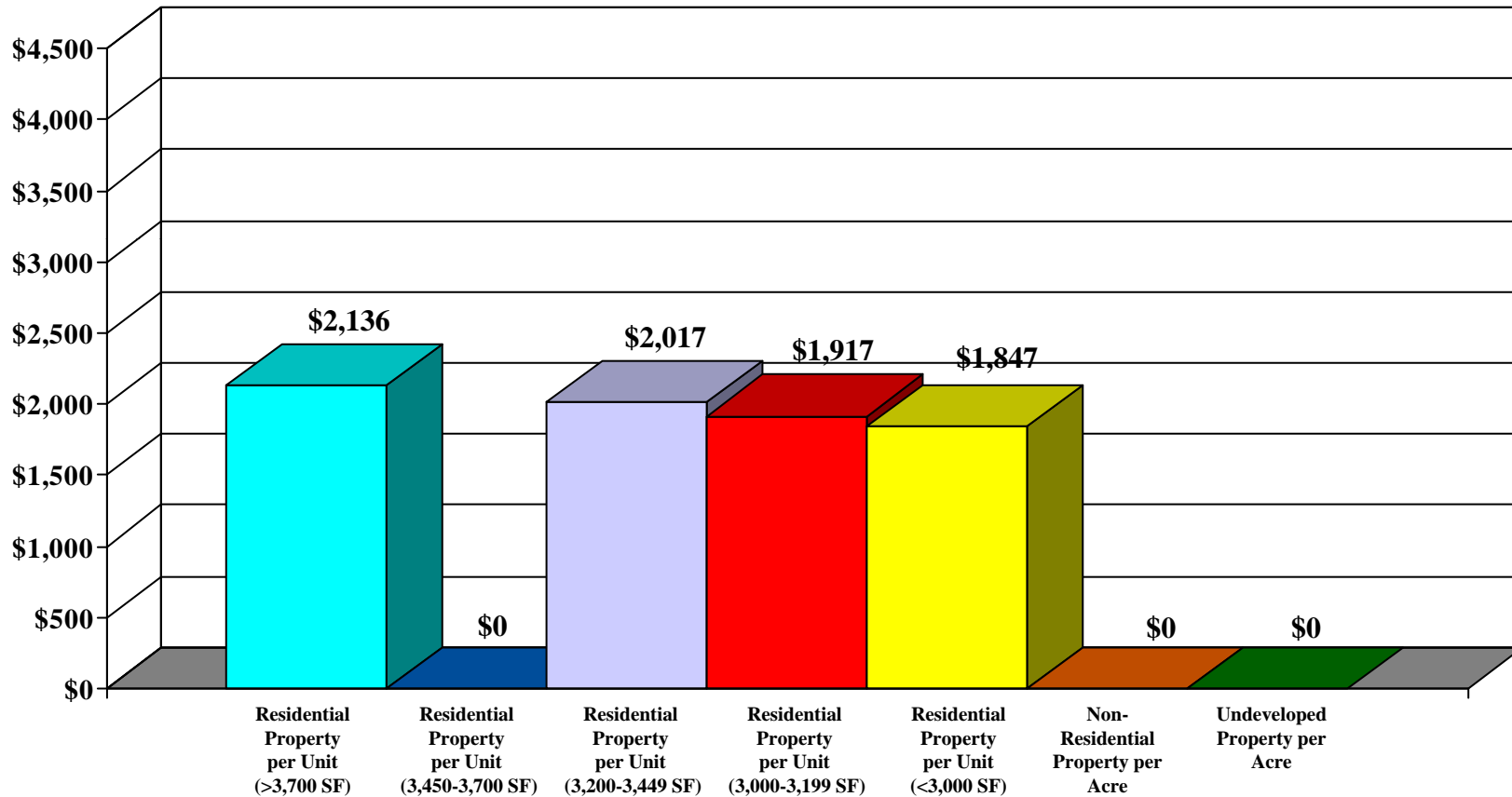
**County of San Bernardino  
 IA No. 1 of Community Facilities District No. 2006-1  
 (Lytle Creek North)**

**Fiscal Year 2014-2015 Actual Special Tax Levy  
 Zone A**



**County of San Bernardino  
 IA No. 1 of Community Facilities District No. 2006-1  
 (Lytle Creek North)**

**Fiscal Year 2014-2015 Actual Special Tax Levy  
 Zone B**



# **EXHIBIT A**

---

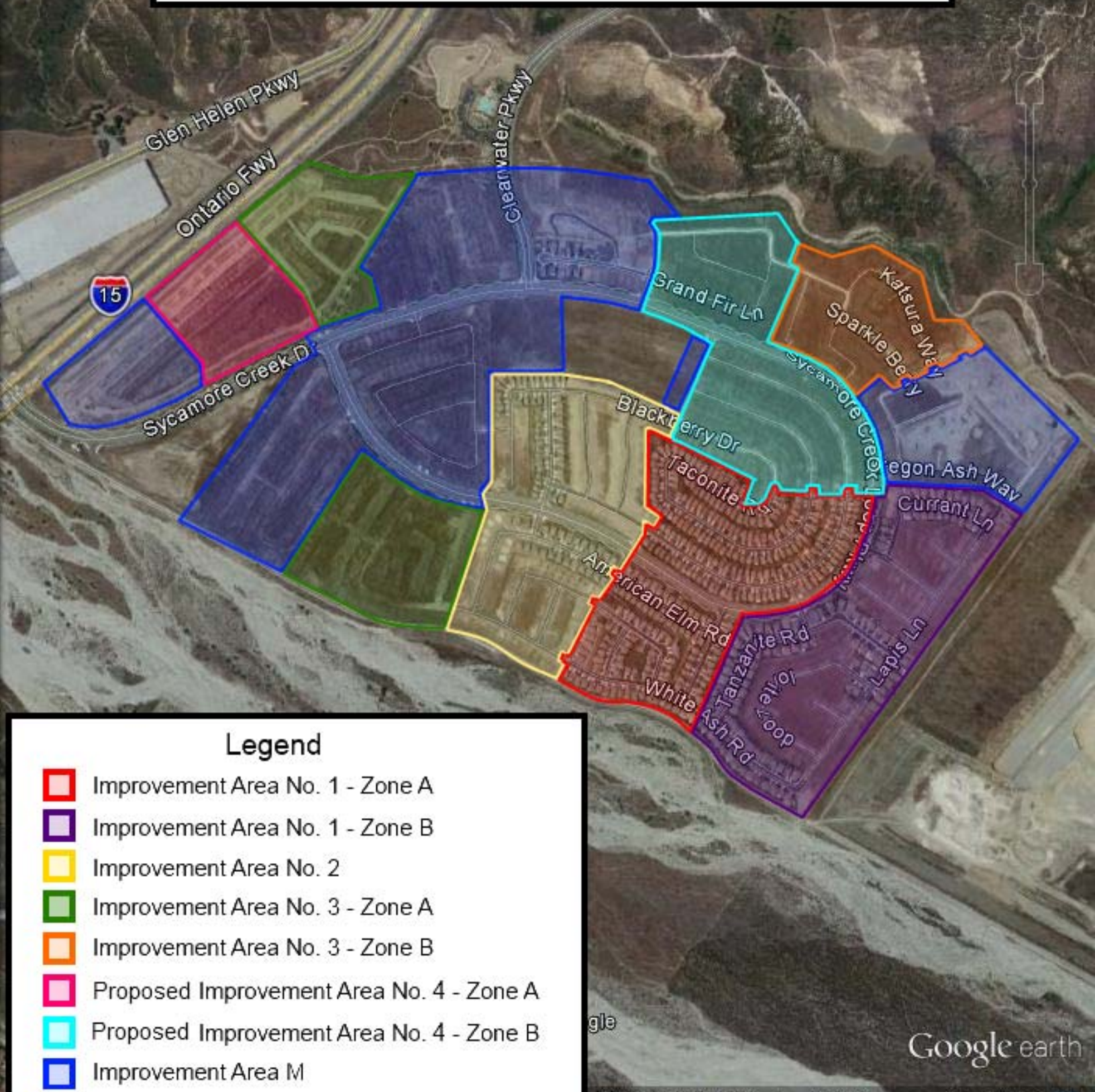
***County of San Bernardino  
Improvement Area No. 1 of  
Community Facilities District No. 2006-1***

***Boundary Map***

---



County of San Bernardino  
 Community Facilities District No. 2006-1  
 (Lytle Creek North)  
 Improvement Area M  
 and Improvement Area Nos. 1, 2, 3, 4



**Legend**

	Improvement Area No. 1 - Zone A
	Improvement Area No. 1 - Zone B
	Improvement Area No. 2
	Improvement Area No. 3 - Zone A
	Improvement Area No. 3 - Zone B
	Proposed Improvement Area No. 4 - Zone A
	Proposed Improvement Area No. 4 - Zone B
	Improvement Area M

## **EXHIBIT B**

---

*County of San Bernardino  
Improvement Area No. 1 of  
Community Facilities District No. 2006-1*

*Summary of Transactions to Fund and Accounts  
Series 2010 and Series 2013*

---

**COUNTY OF SAN BERNARDINO**  
**IMPROVEMENT AREA NO. 1 OF COMMUNITY FACILITIES DISTRICT NO. 2006-1**  
**(LYTLE CREEK NORTH)**  
**SPECIAL TAX BONDS, SERIES 2010 & 2013**  
**FISCAL YEAR 2013-2014 (4/1/13 through 4/30/14)**

	SPECIAL TAX FUND	INTEREST ACCOUNT	PRINCIPAL ACCOUNT	RESERVE FUND	ADMIN EXPENSE FUND	WATER DISTRICT FACILITIES ACCOUNT	COUNTY FACILITIES ACCOUNT	2013 RESERVE FUND	2013 COUNTY FACILITIES ACCOUNT	2013 COST OF ISSUANCE ACCOUNT	TOTAL
BEGINNING BALANCE	\$157,470	\$13	\$3	\$485,403	\$10,017	\$0	\$1,314,854	\$0	\$0	\$0	\$1,967,760
<b>SOURCES OF FUNDS</b>											
BOND PROCEEDS	\$0	\$0	\$0	\$0	\$0	\$0	\$0	\$130,931	\$1,974,391	\$175,000	\$2,280,322
SPECIAL TAX RECEIPTS	\$992,049	\$0	\$0	\$0	\$0	\$0	\$0	\$0	\$0	\$0	\$992,049
INVESTMENT AGREEMENT EARNINGS	\$0	\$0	\$0	\$0	\$0	\$0	\$0	\$0	\$0	\$0	\$0
OTHER INVESTMENT EARNINGS	\$132	\$1	\$1	\$183	\$4	\$0	\$430	\$14	\$203	\$1	\$967
MISCELLANEOUS	\$0	\$0	\$0	\$0	\$0	\$0	\$0	\$0	\$0	\$0	\$0
TOTAL SOURCES	\$992,181	\$1	\$1	\$183	\$4	\$0	\$430	\$130,945	\$1,974,594	\$175,001	\$3,273,339
<b>USES OF FUNDS</b>											
INTEREST PAYMENTS	\$0	(\$386,626)	\$0	\$0	\$0	\$0	\$0	\$0	\$0	\$0	(\$386,626)
PRINCIPAL PAYMENTS	\$0	\$0	(\$130,000)	\$0	\$0	\$0	\$0	\$0	\$0	\$0	(\$130,000)
PUBLIC FACILITIES	\$0	\$0	\$0	\$0	\$0	\$0	(\$500,000)	\$0	(\$370,353)	\$0	(\$870,353)
PROFESSIONAL SERVICES	\$0	\$0	\$0	\$0	(\$2,621)	\$0	\$0	\$0	\$0	(\$166,405)	(\$169,026)
MISCELLANEOUS	\$0	\$0	\$0	\$0	\$0	\$0	\$0	\$0	\$0	\$0	\$0
TOTAL USES	\$0	(\$386,626)	(\$130,000)	\$0	(\$2,621)	\$0	(\$500,000)	\$0	(\$370,353)	(\$166,405)	(\$1,556,006)
TRANSFERS	(\$516,626)	\$386,626	\$130,000	\$0	\$0	\$0	\$0	\$0	\$0	\$0	\$0
ENDING BALANCE	\$633,025	\$13	\$4	\$485,585	\$7,399	\$0	\$815,284	\$130,945	\$1,604,241	\$8,596	\$3,685,093

SERIES 2010 & 2013 COMBINED RESERVE REQUIREMENT = \$616,443.76 (based on Series 2013 OS)

**COUNTY OF SAN BERNARDINO**  
**IMPROVEMENT AREA NO. 1 OF COMMUNITY FACILITIES DISTRICT NO. 2006-1**  
**(LYTLE CREEK NORTH)**  
**SPECIAL TAX BONDS, SERIES 2010 & 2013**  
**April 2013**

	SPECIAL TAX FUND	INTEREST ACCOUNT	PRINCIPAL ACCOUNT	RESERVE FUND	ADMIN EXPENSE FUND	WATER DISTRICT FACILITIES ACCOUNT	COUNTY FACILITIES ACCOUNT	2013 RESERVE FUND	2013 COUNTY FACILITIES ACCOUNT	2013 COST OF ISSUANCE ACCOUNT	TOTAL
BEGINNING BALANCE	\$157,470	\$13	\$3	\$485,403	\$10,017	\$0	\$1,314,854	\$0	\$0	\$0	\$1,967,760
<b>SOURCES OF FUNDS</b>											
BOND PROCEEDS	\$0	\$0	\$0	\$0	\$0	\$0	\$0	\$0	\$0	\$0	\$0
SPECIAL TAX RECEIPTS	\$315,732	\$0	\$0	\$0	\$0	\$0	\$0	\$0	\$0	\$0	\$315,732
INVESTMENT AGREEMENT EARNINGS	\$0	\$0	\$0	\$0	\$0	\$0	\$0	\$0	\$0	\$0	\$0
OTHER INVESTMENT EARNINGS	\$5	\$0	\$0	\$16	\$0	\$0	\$45	\$0	\$0	\$0	\$67
MISCELLANEOUS	\$0	\$0	\$0	\$0	\$0	\$0	\$0	\$0	\$0	\$0	\$0
TOTAL SOURCES	\$315,737	\$0	\$0	\$16	\$0	\$0	\$45	\$0	\$0	\$0	\$315,799
<b>USES OF FUNDS</b>											
INTEREST PAYMENTS	\$0	\$0	\$0	\$0	\$0	\$0	\$0	\$0	\$0	\$0	\$0
PRINCIPAL PAYMENTS	\$0	\$0	\$0	\$0	\$0	\$0	\$0	\$0	\$0	\$0	\$0
PUBLIC FACILITIES	\$0	\$0	\$0	\$0	\$0	\$0	\$0	\$0	\$0	\$0	\$0
PROFESSIONAL SERVICES	\$0	\$0	\$0	\$0	\$0	\$0	\$0	\$0	\$0	\$0	\$0
MISCELLANEOUS	\$0	\$0	\$0	\$0	\$0	\$0	\$0	\$0	\$0	\$0	\$0
TOTAL USES	\$0	\$0	\$0	\$0	\$0	\$0	\$0	\$0	\$0	\$0	\$0
TRANSFERS	\$0	\$0	\$0	\$0	\$0	\$0	\$0	\$0	\$0	\$0	\$0
ENDING BALANCE	\$473,207	\$13	\$3	\$485,419	\$10,017	\$0	\$1,314,899	\$0	\$0	\$0	\$2,283,559

SERIES 2010 & 2013 COMBINED RESERVE REQUIREMENT = \$616,443.76 (based on Series 2013 OS)

PRINTED: 09/05/14  
08:14

PAGE:1

**COUNTY OF SAN BERNARDINO**  
**IMPROVEMENT AREA NO. 1 OF COMMUNITY FACILITIES DISTRICT NO. 2006-1**  
**(LYTLE CREEK NORTH)**  
**SPECIAL TAX BONDS, SERIES 2010 & 2013**  
**May 2013**

	SPECIAL TAX FUND	INTEREST ACCOUNT	PRINCIPAL ACCOUNT	RESERVE FUND	ADMIN EXPENSE FUND	WATER DISTRICT FACILITIES ACCOUNT	COUNTY FACILITIES ACCOUNT	2013 RESERVE FUND	2013 COUNTY FACILITIES ACCOUNT	2013 COST OF ISSUANCE ACCOUNT	TOTAL
BEGINNING BALANCE	\$473,207	\$13	\$3	\$485,419	\$10,017	\$0	\$1,314,899	\$0	\$0	\$0	\$2,283,559
<b>SOURCES OF FUNDS</b>											
BOND PROCEEDS	\$0	\$0	\$0	\$0	\$0	\$0	\$0	\$0	\$0	\$0	\$0
SPECIAL TAX RECEIPTS	\$3,547	\$0	\$0	\$0	\$0	\$0	\$0	\$0	\$0	\$0	\$3,547
INVESTMENT AGREEMENT EARNINGS	\$0	\$0	\$0	\$0	\$0	\$0	\$0	\$0	\$0	\$0	\$0
OTHER INVESTMENT EARNINGS	\$8	\$0	\$0	\$16	\$0	\$0	\$43	\$0	\$0	\$0	\$68
MISCELLANEOUS	\$0	\$0	\$0	\$0	\$0	\$0	\$0	\$0	\$0	\$0	\$0
TOTAL SOURCES	\$3,555	\$0	\$0	\$16	\$0	\$0	\$43	\$0	\$0	\$0	\$3,614
<b>USES OF FUNDS</b>											
INTEREST PAYMENTS	\$0	\$0	\$0	\$0	\$0	\$0	\$0	\$0	\$0	\$0	\$0
PRINCIPAL PAYMENTS	\$0	\$0	\$0	\$0	\$0	\$0	\$0	\$0	\$0	\$0	\$0
PUBLIC FACILITIES	\$0	\$0	\$0	\$0	\$0	\$0	\$0	\$0	\$0	\$0	\$0
PROFESSIONAL SERVICES	\$0	\$0	\$0	\$0	\$0	\$0	\$0	\$0	\$0	\$0	\$0
MISCELLANEOUS	\$0	\$0	\$0	\$0	\$0	\$0	\$0	\$0	\$0	\$0	\$0
TOTAL USES	\$0	\$0	\$0	\$0	\$0	\$0	\$0	\$0	\$0	\$0	\$0
TRANSFERS	\$0	\$0	\$0	\$0	\$0	\$0	\$0	\$0	\$0	\$0	\$0
ENDING BALANCE	\$476,762	\$13	\$3	\$485,435	\$10,018	\$0	\$1,314,942	\$0	\$0	\$0	\$2,287,173

SERIES 2010 & 2013 COMBINED RESERVE REQUIREMENT = \$616,443.76 (based on Series 2013 OS)

PRINTED: 09/05/14  
08:14

PAGE:2

**COUNTY OF SAN BERNARDINO  
IMPROVEMENT AREA NO. 1 OF COMMUNITY FACILITIES DISTRICT NO. 2006-1  
(LYTLE CREEK NORTH)  
SPECIAL TAX BONDS, SERIES 2010 & 2013  
June 2013**

	SPECIAL TAX FUND	INTEREST ACCOUNT	PRINCIPAL ACCOUNT	RESERVE FUND	ADMIN EXPENSE FUND	WATER DISTRICT FACILITIES ACCOUNT	COUNTY FACILITIES ACCOUNT	2013 RESERVE FUND	2013 COUNTY FACILITIES ACCOUNT	2013 COST OF ISSUANCE ACCOUNT	TOTAL
BEGINNING BALANCE	\$476,762	\$13	\$3	\$485,435	\$10,018	\$0	\$1,314,942	\$0	\$0	\$0	\$2,287,173
<b>SOURCES OF FUNDS</b>											
BOND PROCEEDS	\$0	\$0	\$0	\$0	\$0	\$0	\$0	\$0	\$0	\$0	\$0
SPECIAL TAX RECEIPTS	\$0	\$0	\$0	\$0	\$0	\$0	\$0	\$0	\$0	\$0	\$0
INVESTMENT AGREEMENT EARNINGS	\$0	\$0	\$0	\$0	\$0	\$0	\$0	\$0	\$0	\$0	\$0
OTHER INVESTMENT EARNINGS	\$16	\$0	\$0	\$16	\$0	\$0	\$45	\$0	\$0	\$0	\$78
MISCELLANEOUS	\$0	\$0	\$0	\$0	\$0	\$0	\$0	\$0	\$0	\$0	\$0
TOTAL SOURCES	\$16	\$0	\$0	\$16	\$0	\$0	\$45	\$0	\$0	\$0	\$78
<b>USES OF FUNDS</b>											
INTEREST PAYMENTS	\$0	\$0	\$0	\$0	\$0	\$0	\$0	\$0	\$0	\$0	\$0
PRINCIPAL PAYMENTS	\$0	\$0	\$0	\$0	\$0	\$0	\$0	\$0	\$0	\$0	\$0
PUBLIC FACILITIES	\$0	\$0	\$0	\$0	\$0	\$0	\$0	\$0	\$0	\$0	\$0
PROFESSIONAL SERVICES	\$0	\$0	\$0	\$0	\$0	\$0	\$0	\$0	\$0	\$0	\$0
MISCELLANEOUS	\$0	\$0	\$0	\$0	\$0	\$0	\$0	\$0	\$0	\$0	\$0
TOTAL USES	\$0	\$0	\$0	\$0	\$0	\$0	\$0	\$0	\$0	\$0	\$0
TRANSFERS	\$0	\$0	\$0	\$0	\$0	\$0	\$0	\$0	\$0	\$0	\$0
ENDING BALANCE	\$476,778	\$13	\$3	\$485,452	\$10,018	\$0	\$1,314,987	\$0	\$0	\$0	\$2,287,251

SERIES 2010 & 2013 COMBINED RESERVE REQUIREMENT = \$616,443.76 (based on Series 2013 OS)

PRINTED: 09/05/14  
08:14

PAGE:3

**COUNTY OF SAN BERNARDINO**  
**IMPROVEMENT AREA NO. 1 OF COMMUNITY FACILITIES DISTRICT NO. 2006-1**  
**(LYTLE CREEK NORTH)**  
**SPECIAL TAX BONDS, SERIES 2010 & 2013**  
**July 2013**

	SPECIAL TAX FUND	INTEREST ACCOUNT	PRINCIPAL ACCOUNT	RESERVE FUND	ADMIN EXPENSE FUND	WATER DISTRICT FACILITIES ACCOUNT	COUNTY FACILITIES ACCOUNT	2013 RESERVE FUND	2013 COUNTY FACILITIES ACCOUNT	2013 COST OF ISSUANCE ACCOUNT	TOTAL
BEGINNING BALANCE	\$476,778	\$13	\$3	\$485,452	\$10,018	\$0	\$1,314,987	\$0	\$0	\$0	\$2,287,251
<b>SOURCES OF FUNDS</b>											
BOND PROCEEDS	\$0	\$0	\$0	\$0	\$0	\$0	\$0	\$0	\$0	\$0	\$0
SPECIAL TAX RECEIPTS	\$2,684	\$0	\$0	\$0	\$0	\$0	\$0	\$0	\$0	\$0	\$2,684
INVESTMENT AGREEMENT EARNINGS	\$0	\$0	\$0	\$0	\$0	\$0	\$0	\$0	\$0	\$0	\$0
OTHER INVESTMENT EARNINGS	\$16	\$0	\$0	\$16	\$0	\$0	\$43	\$0	\$0	\$0	\$75
MISCELLANEOUS	\$0	\$0	\$0	\$0	\$0	\$0	\$0	\$0	\$0	\$0	\$0
TOTAL SOURCES	\$2,700	\$0	\$0	\$16	\$0	\$0	\$43	\$0	\$0	\$0	\$2,759
<b>USES OF FUNDS</b>											
INTEREST PAYMENTS	\$0	\$0	\$0	\$0	\$0	\$0	\$0	\$0	\$0	\$0	\$0
PRINCIPAL PAYMENTS	\$0	\$0	\$0	\$0	\$0	\$0	\$0	\$0	\$0	\$0	\$0
PUBLIC FACILITIES	\$0	\$0	\$0	\$0	\$0	\$0	\$0	\$0	\$0	\$0	\$0
PROFESSIONAL SERVICES	\$0	\$0	\$0	\$0	\$0	\$0	\$0	\$0	\$0	\$0	\$0
MISCELLANEOUS	\$0	\$0	\$0	\$0	\$0	\$0	\$0	\$0	\$0	\$0	\$0
TOTAL USES	\$0	\$0	\$0	\$0	\$0	\$0	\$0	\$0	\$0	\$0	\$0
TRANSFERS	\$0	\$0	\$0	\$0	\$0	\$0	\$0	\$0	\$0	\$0	\$0
ENDING BALANCE	\$479,478	\$13	\$3	\$485,468	\$10,018	\$0	\$1,315,030	\$0	\$0	\$0	\$2,290,010

SERIES 2010 & 2013 COMBINED RESERVE REQUIREMENT = \$616,443.76 (based on Series 2013 OS)

PRINTED: 09/05/14  
08:14

PAGE:4

**COUNTY OF SAN BERNARDINO**  
**IMPROVEMENT AREA NO. 1 OF COMMUNITY FACILITIES DISTRICT NO. 2006-1**  
**(LYTLE CREEK NORTH)**  
**SPECIAL TAX BONDS, SERIES 2010 & 2013**  
**August 2013**

	SPECIAL TAX FUND	INTEREST ACCOUNT	PRINCIPAL ACCOUNT	RESERVE FUND	ADMIN EXPENSE FUND	WATER DISTRICT FACILITIES ACCOUNT	COUNTY FACILITIES ACCOUNT	2013 RESERVE FUND	2013 COUNTY FACILITIES ACCOUNT	2013 COST OF ISSUANCE ACCOUNT	TOTAL
BEGINNING BALANCE	\$479,478	\$13	\$3	\$485,468	\$10,018	\$0	\$1,315,030	\$0	\$0	\$0	\$2,290,010
<b>SOURCES OF FUNDS</b>											
BOND PROCEEDS	\$0	\$0	\$0	\$0	\$0	\$0	\$0	\$0	\$0	\$0	\$0
SPECIAL TAX RECEIPTS	\$0	\$0	\$0	\$0	\$0	\$0	\$0	\$0	\$0	\$0	\$0
INVESTMENT AGREEMENT EARNINGS	\$0	\$0	\$0	\$0	\$0	\$0	\$0	\$0	\$0	\$0	\$0
OTHER INVESTMENT EARNINGS	\$16	\$0	\$0	\$16	\$0	\$0	\$45	\$0	\$0	\$0	\$78
MISCELLANEOUS	\$0	\$0	\$0	\$0	\$0	\$0	\$0	\$0	\$0	\$0	\$0
TOTAL SOURCES	\$16	\$0	\$0	\$16	\$0	\$0	\$45	\$0	\$0	\$0	\$78
<b>USES OF FUNDS</b>											
INTEREST PAYMENTS	\$0	\$0	\$0	\$0	\$0	\$0	\$0	\$0	\$0	\$0	\$0
PRINCIPAL PAYMENTS	\$0	\$0	\$0	\$0	\$0	\$0	\$0	\$0	\$0	\$0	\$0
PUBLIC FACILITIES	\$0	\$0	\$0	\$0	\$0	\$0	\$0	\$0	\$0	\$0	\$0
PROFESSIONAL SERVICES	\$0	\$0	\$0	\$0	\$0	\$0	\$0	\$0	\$0	\$0	\$0
MISCELLANEOUS	\$0	\$0	\$0	\$0	\$0	\$0	\$0	\$0	\$0	\$0	\$0
TOTAL USES	\$0	\$0	\$0	\$0	\$0	\$0	\$0	\$0	\$0	\$0	\$0
TRANSFERS	(\$306,406)	\$176,406	\$130,000	\$0	\$0	\$0	\$0	\$0	\$0	\$0	\$0
ENDING BALANCE	\$173,088	\$176,419	\$130,003	\$485,484	\$10,019	\$0	\$1,315,075	\$0	\$0	\$0	\$2,290,088

SERIES 2010 & 2013 COMBINED RESERVE REQUIREMENT = \$616,443.76 (based on Series 2013 OS)



**COUNTY OF SAN BERNARDINO**  
**IMPROVEMENT AREA NO. 1 OF COMMUNITY FACILITIES DISTRICT NO. 2006-1**  
**(LYTLE CREEK NORTH)**  
**SPECIAL TAX BONDS, SERIES 2010 & 2013**  
**September 2013**

	SPECIAL TAX FUND	INTEREST ACCOUNT	PRINCIPAL ACCOUNT	RESERVE FUND	ADMIN EXPENSE FUND	WATER DISTRICT FACILITIES ACCOUNT	COUNTY FACILITIES ACCOUNT	2013 RESERVE FUND	2013 COUNTY FACILITIES ACCOUNT	2013 COST OF ISSUANCE ACCOUNT	TOTAL
BEGINNING BALANCE	\$173,088	\$176,419	\$130,003	\$485,484	\$10,019	\$0	\$1,315,075	\$0	\$0	\$0	\$2,290,088
<b>SOURCES OF FUNDS</b>											
BOND PROCEEDS	\$0	\$0	\$0	\$0	\$0	\$0	\$0	\$0	\$0	\$0	\$0
SPECIAL TAX RECEIPTS	\$0	\$0	\$0	\$0	\$0	\$0	\$0	\$0	\$0	\$0	\$0
INVESTMENT AGREEMENT EARNINGS	\$0	\$0	\$0	\$0	\$0	\$0	\$0	\$0	\$0	\$0	\$0
OTHER INVESTMENT EARNINGS	\$16	\$0	\$0	\$16	\$0	\$0	\$45	\$0	\$0	\$0	\$78
MISCELLANEOUS	\$0	\$0	\$0	\$0	\$0	\$0	\$0	\$0	\$0	\$0	\$0
TOTAL SOURCES	\$16	\$0	\$0	\$16	\$0	\$0	\$45	\$0	\$0	\$0	\$78
<b>USES OF FUNDS</b>											
INTEREST PAYMENTS	\$0	(\$176,406)	\$0	\$0	\$0	\$0	\$0	\$0	\$0	\$0	(\$176,406)
PRINCIPAL PAYMENTS	\$0	\$0	(\$130,000)	\$0	\$0	\$0	\$0	\$0	\$0	\$0	(\$130,000)
PUBLIC FACILITIES	\$0	\$0	\$0	\$0	\$0	\$0	\$0	\$0	\$0	\$0	\$0
PROFESSIONAL SERVICES	\$0	\$0	\$0	\$0	\$0	\$0	\$0	\$0	\$0	\$0	\$0
MISCELLANEOUS	\$0	\$0	\$0	\$0	\$0	\$0	\$0	\$0	\$0	\$0	\$0
TOTAL USES	\$0	(\$176,406)	(\$130,000)	\$0	\$0	\$0	\$0	\$0	\$0	\$0	(\$306,406)
TRANSFERS	\$0	\$0	\$0	\$0	\$0	\$0	\$0	\$0	\$0	\$0	\$0
ENDING BALANCE	\$173,104	\$13	\$3	\$485,501	\$10,019	\$0	\$1,315,120	\$0	\$0	\$0	\$1,983,760

SERIES 2010 & 2013 COMBINED RESERVE REQUIREMENT = \$616,443.76 (based on Series 2013 OS)

**COUNTY OF SAN BERNARDINO**  
**IMPROVEMENT AREA NO. 1 OF COMMUNITY FACILITIES DISTRICT NO. 2006-1**  
**(LYTLE CREEK NORTH)**  
**SPECIAL TAX BONDS, SERIES 2010 & 2013**  
**October 2013**

	SPECIAL TAX FUND	INTEREST ACCOUNT	PRINCIPAL ACCOUNT	RESERVE FUND	ADMIN EXPENSE FUND	WATER DISTRICT FACILITIES ACCOUNT	COUNTY FACILITIES ACCOUNT	2013 RESERVE FUND	2013 COUNTY FACILITIES ACCOUNT	2013 COST OF ISSUANCE ACCOUNT	TOTAL
BEGINNING BALANCE	\$173,104	\$13	\$3	\$485,501	\$10,019	\$0	\$1,315,120	\$0	\$0	\$0	\$1,983,760
<b>SOURCES OF FUNDS</b>											
BOND PROCEEDS	\$0	\$0	\$0	\$0	\$0	\$0	\$0	\$0	\$0	\$0	\$0
SPECIAL TAX RECEIPTS	\$0	\$0	\$0	\$0	\$0	\$0	\$0	\$0	\$0	\$0	\$0
INVESTMENT AGREEMENT EARNINGS	\$0	\$0	\$0	\$0	\$0	\$0	\$0	\$0	\$0	\$0	\$0
OTHER INVESTMENT EARNINGS	\$4	\$0	\$0	\$12	\$0	\$0	\$33	\$0	\$0	\$0	\$51
MISCELLANEOUS	\$0	\$0	\$0	\$0	\$0	\$0	\$0	\$0	\$0	\$0	\$0
TOTAL SOURCES	\$4	\$0	\$0	\$12	\$0	\$0	\$33	\$0	\$0	\$0	\$51
<b>USES OF FUNDS</b>											
INTEREST PAYMENTS	\$0	\$0	\$0	\$0	\$0	\$0	\$0	\$0	\$0	\$0	\$0
PRINCIPAL PAYMENTS	\$0	\$0	\$0	\$0	\$0	\$0	\$0	\$0	\$0	\$0	\$0
PUBLIC FACILITIES	\$0	\$0	\$0	\$0	\$0	\$0	(\$500,000)	\$0	\$0	\$0	(\$500,000)
PROFESSIONAL SERVICES	\$0	\$0	\$0	\$0	\$0	\$0	\$0	\$0	\$0	\$0	\$0
MISCELLANEOUS	\$0	\$0	\$0	\$0	\$0	\$0	\$0	\$0	\$0	\$0	\$0
TOTAL USES	\$0	\$0	\$0	\$0	\$0	\$0	(\$500,000)	\$0	\$0	\$0	(\$500,000)
TRANSFERS	\$0	\$0	\$0	\$0	\$0	\$0	\$0	\$0	\$0	\$0	\$0
ENDING BALANCE	\$173,108	\$13	\$4	\$485,513	\$10,019	\$0	\$815,153	\$0	\$0	\$0	\$1,483,810

SERIES 2010 & 2013 COMBINED RESERVE REQUIREMENT = \$616,443.76 (based on Series 2013 OS)

PRINTED: 09/05/14  
08:14

PAGE:7

**COUNTY OF SAN BERNARDINO**  
**IMPROVEMENT AREA NO. 1 OF COMMUNITY FACILITIES DISTRICT NO. 2006-1**  
**(LYTLE CREEK NORTH)**  
**SPECIAL TAX BONDS, SERIES 2010 & 2013**  
**November 2013**

	SPECIAL TAX FUND	INTEREST ACCOUNT	PRINCIPAL ACCOUNT	RESERVE FUND	ADMIN EXPENSE FUND	WATER DISTRICT FACILITIES ACCOUNT	COUNTY FACILITIES ACCOUNT	2013 RESERVE FUND	2013 COUNTY FACILITIES ACCOUNT	2013 COST OF ISSUANCE ACCOUNT	TOTAL
BEGINNING BALANCE	\$173,108	\$13	\$4	\$485,513	\$10,019	\$0	\$815,153	\$0	\$0	\$0	\$1,483,810
<b>SOURCES OF FUNDS</b>											
BOND PROCEEDS	\$0	\$0	\$0	\$0	\$0	\$0	\$0	\$130,931	\$1,974,391	\$175,000	\$2,280,322
SPECIAL TAX RECEIPTS	\$12,103	\$0	\$0	\$0	\$0	\$0	\$0	\$0	\$0	\$0	\$12,103
INVESTMENT AGREEMENT EARNINGS	\$0	\$0	\$0	\$0	\$0	\$0	\$0	\$0	\$0	\$0	\$0
OTHER INVESTMENT EARNINGS	\$4	\$0	\$0	\$12	\$0	\$0	\$30	\$0	\$0	\$0	\$47
MISCELLANEOUS	\$0	\$0	\$0	\$0	\$0	\$0	\$0	\$0	\$0	\$0	\$0
TOTAL SOURCES	\$12,107	\$0	\$0	\$12	\$0	\$0	\$30	\$130,931	\$1,974,391	\$175,000	\$2,292,472
<b>USES OF FUNDS</b>											
INTEREST PAYMENTS	\$0	\$0	\$0	\$0	\$0	\$0	\$0	\$0	\$0	\$0	\$0
PRINCIPAL PAYMENTS	\$0	\$0	\$0	\$0	\$0	\$0	\$0	\$0	\$0	\$0	\$0
PUBLIC FACILITIES	\$0	\$0	\$0	\$0	\$0	\$0	\$0	\$0	\$0	\$0	\$0
PROFESSIONAL SERVICES	\$0	\$0	\$0	\$0	\$0	\$0	\$0	\$0	\$0	(\$166,405)	(\$166,405)
MISCELLANEOUS	\$0	\$0	\$0	\$0	\$0	\$0	\$0	\$0	\$0	\$0	\$0
TOTAL USES	\$0	\$0	\$0	\$0	\$0	\$0	\$0	\$0	\$0	(\$166,405)	(\$166,405)
TRANSFERS	\$0	\$0	\$0	\$0	\$0	\$0	\$0	\$0	\$0	\$0	\$0
ENDING BALANCE	\$185,215	\$13	\$4	\$485,525	\$10,020	\$0	\$815,183	\$130,931	\$1,974,391	\$8,595	\$3,609,877

SERIES 2010 & 2013 COMBINED RESERVE REQUIREMENT = \$616,443.76 (based on Series 2013 OS)

**COUNTY OF SAN BERNARDINO**  
**IMPROVEMENT AREA NO. 1 OF COMMUNITY FACILITIES DISTRICT NO. 2006-1**  
**(LYTLE CREEK NORTH)**  
**SPECIAL TAX BONDS, SERIES 2010 & 2013**  
**December 2013**

	SPECIAL TAX FUND	INTEREST ACCOUNT	PRINCIPAL ACCOUNT	RESERVE FUND	ADMIN EXPENSE FUND	WATER DISTRICT FACILITIES ACCOUNT	COUNTY FACILITIES ACCOUNT	2013 RESERVE FUND	2013 COUNTY FACILITIES ACCOUNT	2013 COST OF ISSUANCE ACCOUNT	TOTAL
BEGINNING BALANCE	\$185,215	\$13	\$4	\$485,525	\$10,020	\$0	\$815,183	\$130,931	\$1,974,391	\$8,595	\$3,609,877
<b>SOURCES OF FUNDS</b>											
BOND PROCEEDS	\$0	\$0	\$0	\$0	\$0	\$0	\$0	\$0	\$0	\$0	\$0
SPECIAL TAX RECEIPTS	\$322,323	\$0	\$0	\$0	\$0	\$0	\$0	\$0	\$0	\$0	\$322,323
INVESTMENT AGREEMENT EARNINGS	\$0	\$0	\$0	\$0	\$0	\$0	\$0	\$0	\$0	\$0	\$0
OTHER INVESTMENT EARNINGS	\$4	\$0	\$0	\$12	\$0	\$0	\$20	\$1	\$16	\$0	\$54
MISCELLANEOUS	\$0	\$0	\$0	\$0	\$0	\$0	\$0	\$0	\$0	\$0	\$0
TOTAL SOURCES	\$322,327	\$0	\$0	\$12	\$0	\$0	\$20	\$1	\$16	\$0	\$322,377
<b>USES OF FUNDS</b>											
INTEREST PAYMENTS	\$0	\$0	\$0	\$0	\$0	\$0	\$0	\$0	\$0	\$0	\$0
PRINCIPAL PAYMENTS	\$0	\$0	\$0	\$0	\$0	\$0	\$0	\$0	\$0	\$0	\$0
PUBLIC FACILITIES	\$0	\$0	\$0	\$0	\$0	\$0	\$0	\$0	\$0	\$0	\$0
PROFESSIONAL SERVICES	\$0	\$0	\$0	\$0	(\$1,500)	\$0	\$0	\$0	\$0	\$0	(\$1,500)
MISCELLANEOUS	\$0	\$0	\$0	\$0	\$0	\$0	\$0	\$0	\$0	\$0	\$0
TOTAL USES	\$0	\$0	\$0	\$0	(\$1,500)	\$0	\$0	\$0	\$0	\$0	(\$1,500)
TRANSFERS	\$0	\$0	\$0	\$0	\$0	\$0	\$0	\$0	\$0	\$0	\$0
ENDING BALANCE	\$507,542	\$13	\$4	\$485,537	\$8,520	\$0	\$815,203	\$130,932	\$1,974,407	\$8,595	\$3,930,754

SERIES 2010 & 2013 COMBINED RESERVE REQUIREMENT = \$616,443.76 (based on Series 2013 OS)

PRINTED: 09/05/14  
08:14

PAGE:9

**COUNTY OF SAN BERNARDINO  
IMPROVEMENT AREA NO. 1 OF COMMUNITY FACILITIES DISTRICT NO. 2006-1  
(LYTTLE CREEK NORTH)  
SPECIAL TAX BONDS, SERIES 2010 & 2013  
January 2014**

	SPECIAL TAX FUND	INTEREST ACCOUNT	PRINCIPAL ACCOUNT	RESERVE FUND	ADMIN EXPENSE FUND	WATER DISTRICT FACILITIES ACCOUNT	COUNTY FACILITIES ACCOUNT	2013 RESERVE FUND	2013 COUNTY FACILITIES ACCOUNT	2013 COST OF ISSUANCE ACCOUNT	TOTAL
BEGINNING BALANCE	\$507,542	\$13	\$4	\$485,537	\$8,520	\$0	\$815,203	\$130,932	\$1,974,407	\$8,595	\$3,930,754
SOURCES OF FUNDS											
BOND PROCEEDS	\$0	\$0	\$0	\$0	\$0	\$0	\$0	\$0	\$0	\$0	\$0
SPECIAL TAX RECEIPTS	\$6,980	\$0	\$0	\$0	\$0	\$0	\$0	\$0	\$0	\$0	\$6,980
INVESTMENT AGREEMENT EARNINGS	\$0	\$0	\$0	\$0	\$0	\$0	\$0	\$0	\$0	\$0	\$0
OTHER INVESTMENT EARNINGS	\$9	\$0	\$0	\$12	\$0	\$0	\$21	\$3	\$50	\$0	\$96
MISCELLANEOUS	\$0	\$0	\$0	\$0	\$0	\$0	\$0	\$0	\$0	\$0	\$0
TOTAL SOURCES	\$6,989	\$0	\$0	\$12	\$0	\$0	\$21	\$3	\$50	\$0	\$7,076
USES OF FUNDS											
INTEREST PAYMENTS	\$0	\$0	\$0	\$0	\$0	\$0	\$0	\$0	\$0	\$0	\$0
PRINCIPAL PAYMENTS	\$0	\$0	\$0	\$0	\$0	\$0	\$0	\$0	\$0	\$0	\$0
PUBLIC FACILITIES	\$0	\$0	\$0	\$0	\$0	\$0	\$0	\$0	\$0	\$0	\$0
PROFESSIONAL SERVICES	\$0	\$0	\$0	\$0	(\$897)	\$0	\$0	\$0	\$0	\$0	(\$897)
MISCELLANEOUS	\$0	\$0	\$0	\$0	\$0	\$0	\$0	\$0	\$0	\$0	\$0
TOTAL USES	\$0	\$0	\$0	\$0	(\$897)	\$0	\$0	\$0	\$0	\$0	(\$897)
TRANSFERS	\$0	\$0	\$0	\$0	\$0	\$0	\$0	\$0	\$0	\$0	\$0
ENDING BALANCE	\$514,531	\$13	\$4	\$485,550	\$7,623	\$0	\$815,224	\$130,935	\$1,974,458	\$8,595	\$3,936,933

SERIES 2010 & 2013 COMBINED RESERVE REQUIREMENT = \$616,443.76 (based on Series 2013 OS)

**COUNTY OF SAN BERNARDINO  
IMPROVEMENT AREA NO. 1 OF COMMUNITY FACILITIES DISTRICT NO. 2006-1  
(LYTTLE CREEK NORTH)  
SPECIAL TAX BONDS, SERIES 2010 & 2013  
February 2014**

	SPECIAL TAX FUND	INTEREST ACCOUNT	PRINCIPAL ACCOUNT	RESERVE FUND	ADMIN EXPENSE FUND	WATER DISTRICT FACILITIES ACCOUNT	COUNTY FACILITIES ACCOUNT	2013 RESERVE FUND	2013 COUNTY FACILITIES ACCOUNT	2013 COST OF ISSUANCE ACCOUNT	TOTAL
BEGINNING BALANCE	\$514,531	\$13	\$4	\$485,550	\$7,623	\$0	\$815,224	\$130,935	\$1,974,458	\$8,595	\$3,936,933
<b>SOURCES OF FUNDS</b>											
BOND PROCEEDS	\$0	\$0	\$0	\$0	\$0	\$0	\$0	\$0	\$0	\$0	\$0
SPECIAL TAX RECEIPTS	\$2,490	\$0	\$0	\$0	\$0	\$0	\$0	\$0	\$0	\$0	\$2,490
INVESTMENT AGREEMENT EARNINGS	\$0	\$0	\$0	\$0	\$0	\$0	\$0	\$0	\$0	\$0	\$0
OTHER INVESTMENT EARNINGS	\$13	\$0	\$0	\$12	\$0	\$0	\$21	\$3	\$50	\$0	\$100
MISCELLANEOUS	\$0	\$0	\$0	\$0	\$0	\$0	\$0	\$0	\$0	\$0	\$0
TOTAL SOURCES	\$2,503	\$0	\$0	\$12	\$0	\$0	\$21	\$3	\$50	\$0	\$2,590
<b>USES OF FUNDS</b>											
INTEREST PAYMENTS	\$0	\$0	\$0	\$0	\$0	\$0	\$0	\$0	\$0	\$0	\$0
PRINCIPAL PAYMENTS	\$0	\$0	\$0	\$0	\$0	\$0	\$0	\$0	\$0	\$0	\$0
PUBLIC FACILITIES	\$0	\$0	\$0	\$0	\$0	\$0	\$0	\$0	(\$370,353)	\$0	(\$370,353)
PROFESSIONAL SERVICES	\$0	\$0	\$0	\$0	\$0	\$0	\$0	\$0	\$0	\$0	\$0
MISCELLANEOUS	\$0	\$0	\$0	\$0	\$0	\$0	\$0	\$0	\$0	\$0	\$0
TOTAL USES	\$0	\$0	\$0	\$0	\$0	\$0	\$0	\$0	(\$370,353)	\$0	(\$370,353)
TRANSFERS	\$0	\$0	\$0	\$0	\$0	\$0	\$0	\$0	\$0	\$0	\$0
ENDING BALANCE	\$517,034	\$13	\$4	\$485,562	\$7,623	\$0	\$815,245	\$130,939	\$1,604,155	\$8,595	\$3,569,170

SERIES 2010 & 2013 COMBINED RESERVE REQUIREMENT = \$616,443.76 (based on Series 2013 OS)

**COUNTY OF SAN BERNARDINO  
IMPROVEMENT AREA NO. 1 OF COMMUNITY FACILITIES DISTRICT NO. 2006-1  
(LYTLE CREEK NORTH)  
SPECIAL TAX BONDS, SERIES 2010 & 2013  
March 2014**

	SPECIAL TAX FUND	INTEREST ACCOUNT	PRINCIPAL ACCOUNT	RESERVE FUND	ADMIN EXPENSE FUND	WATER DISTRICT FACILITIES ACCOUNT	COUNTY FACILITIES ACCOUNT	2013 RESERVE FUND	2013 COUNTY FACILITIES ACCOUNT	2013 COST OF ISSUANCE ACCOUNT	TOTAL
BEGINNING BALANCE	\$517,034	\$13	\$4	\$485,562	\$7,623	\$0	\$815,245	\$130,939	\$1,604,155	\$8,595	\$3,569,170
<b>SOURCES OF FUNDS</b>											
BOND PROCEEDS	\$0	\$0	\$0	\$0	\$0	\$0	\$0	\$0	\$0	\$0	\$0
SPECIAL TAX RECEIPTS	\$3,520	\$0	\$0	\$0	\$0	\$0	\$0	\$0	\$0	\$0	\$3,520
INVESTMENT AGREEMENT EARNINGS	\$0	\$0	\$0	\$0	\$0	\$0	\$0	\$0	\$0	\$0	\$0
OTHER INVESTMENT EARNINGS	\$12	\$0	\$0	\$11	\$0	\$0	\$19	\$3	\$45	\$0	\$90
MISCELLANEOUS	\$0	\$0	\$0	\$0	\$0	\$0	\$0	\$0	\$0	\$0	\$0
TOTAL SOURCES	\$3,532	\$0	\$0	\$11	\$0	\$0	\$19	\$3	\$45	\$0	\$3,611
<b>USES OF FUNDS</b>											
INTEREST PAYMENTS	\$0	(\$210,220)	\$0	\$0	\$0	\$0	\$0	\$0	\$0	\$0	(\$210,220)
PRINCIPAL PAYMENTS	\$0	\$0	\$0	\$0	\$0	\$0	\$0	\$0	\$0	\$0	\$0
PUBLIC FACILITIES	\$0	\$0	\$0	\$0	\$0	\$0	\$0	\$0	\$0	\$0	\$0
PROFESSIONAL SERVICES	\$0	\$0	\$0	\$0	(\$224)	\$0	\$0	\$0	\$0	\$0	(\$224)
MISCELLANEOUS	\$0	\$0	\$0	\$0	\$0	\$0	\$0	\$0	\$0	\$0	\$0
TOTAL USES	\$0	(\$210,220)	\$0	\$0	(\$224)	\$0	\$0	\$0	\$0	\$0	(\$210,444)
TRANSFERS	(\$210,220)	\$210,220	\$0	\$0	\$0	\$0	\$0	\$0	\$0	\$0	\$0
ENDING BALANCE	\$310,346	\$13	\$4	\$485,573	\$7,399	\$0	\$815,263	\$130,942	\$1,604,200	\$8,596	\$3,362,336

SERIES 2010 & 2013 COMBINED RESERVE REQUIREMENT = \$616,443.76 (based on Series 2013 OS)

**COUNTY OF SAN BERNARDINO**  
**IMPROVEMENT AREA NO. 1 OF COMMUNITY FACILITIES DISTRICT NO. 2006-1**  
**(LYTLE CREEK NORTH)**  
**SPECIAL TAX BONDS, SERIES 2010 & 2013**  
**April 2014**

	SPECIAL TAX FUND	INTEREST ACCOUNT	PRINCIPAL ACCOUNT	RESERVE FUND	ADMIN EXPENSE FUND	WATER DISTRICT FACILITIES ACCOUNT	COUNTY FACILITIES ACCOUNT	2013 RESERVE FUND	2013 COUNTY FACILITIES ACCOUNT	2013 COST OF ISSUANCE ACCOUNT	TOTAL
BEGINNING BALANCE	\$310,346	\$13	\$4	\$485,573	\$7,399	\$0	\$815,263	\$130,942	\$1,604,200	\$8,596	\$3,362,336
<b>SOURCES OF FUNDS</b>											
BOND PROCEEDS	\$0	\$0	\$0	\$0	\$0	\$0	\$0	\$0	\$0	\$0	\$0
SPECIAL TAX RECEIPTS	\$322,671	\$0	\$0	\$0	\$0	\$0	\$0	\$0	\$0	\$0	\$322,671
INVESTMENT AGREEMENT EARNINGS	\$0	\$0	\$0	\$0	\$0	\$0	\$0	\$0	\$0	\$0	\$0
OTHER INVESTMENT EARNINGS	\$8	\$0	\$0	\$12	\$0	\$0	\$21	\$3	\$41	\$0	\$86
MISCELLANEOUS	\$0	\$0	\$0	\$0	\$0	\$0	\$0	\$0	\$0	\$0	\$0
TOTAL SOURCES	\$322,679	\$0	\$0	\$12	\$0	\$0	\$21	\$3	\$41	\$0	\$322,757
<b>USES OF FUNDS</b>											
INTEREST PAYMENTS	\$0	\$0	\$0	\$0	\$0	\$0	\$0	\$0	\$0	\$0	\$0
PRINCIPAL PAYMENTS	\$0	\$0	\$0	\$0	\$0	\$0	\$0	\$0	\$0	\$0	\$0
PUBLIC FACILITIES	\$0	\$0	\$0	\$0	\$0	\$0	\$0	\$0	\$0	\$0	\$0
PROFESSIONAL SERVICES	\$0	\$0	\$0	\$0	\$0	\$0	\$0	\$0	\$0	\$0	\$0
MISCELLANEOUS	\$0	\$0	\$0	\$0	\$0	\$0	\$0	\$0	\$0	\$0	\$0
TOTAL USES	\$0	\$0	\$0	\$0	\$0	\$0	\$0	\$0	\$0	\$0	\$0
TRANSFERS	\$0	\$0	\$0	\$0	\$0	\$0	\$0	\$0	\$0	\$0	\$0
ENDING BALANCE	\$633,025	\$13	\$4	\$485,585	\$7,399	\$0	\$815,284	\$130,945	\$1,604,241	\$8,596	\$3,685,093

SERIES 2010 & 2013 COMBINED RESERVE REQUIREMENT = \$616,443.76 (based on Series 2013 OS)



# **EXHIBIT C**

---

***County of San Bernardino  
Improvement Area No. 1 of  
Community Facilities District No. 2006-1***

***Special Tax Roll  
Fiscal Year 2014-2015***

---

**Exhibit C****County of San Bernardino IA No. 1 of CFD No. 2006-1  
FY 2014-2015 Special Tax Levy**

<u>Assessor's Parcel Number</u>	<u>Zone</u>	<u>FY 2014-15 Special Tax</u>
0239-882-01	ZONE B	\$2,136.05
0239-882-02	ZONE B	\$2,017.26
0239-883-01	ZONE B	\$2,136.05
0239-883-02	ZONE B	\$2,017.26
0239-883-03	ZONE B	\$2,017.26
0239-883-04	ZONE B	\$2,136.05
0239-883-05	ZONE B	\$2,017.26
0239-883-09	ZONE B	\$2,017.26
0239-883-10	ZONE B	\$2,136.05
0239-883-11	ZONE B	\$2,017.26
0239-883-12	ZONE B	\$2,136.05
0239-883-13	ZONE B	\$2,017.26
0239-883-14	ZONE B	\$1,847.03
0239-883-15	ZONE B	\$1,917.03
0239-883-16	ZONE B	\$1,847.03
0239-883-17	ZONE B	\$1,847.03
0239-883-18	ZONE B	\$1,847.03
0239-883-19	ZONE B	\$1,847.03
0239-883-20	ZONE B	\$1,847.03
0239-883-21	ZONE B	\$1,847.03
0239-883-22	ZONE B	\$1,847.03
0239-883-23	ZONE B	\$1,847.03
0239-883-24	ZONE B	\$1,847.03
0239-883-25	ZONE B	\$1,847.03
0239-883-26	ZONE B	\$1,847.03
0239-883-27	ZONE B	\$1,847.03
0239-883-28	ZONE B	\$1,847.03
0239-883-29	ZONE B	\$1,847.03
0239-883-30	ZONE B	\$1,847.03
0239-883-31	ZONE B	\$1,847.03
0239-883-32	ZONE B	\$1,847.03
0239-883-57	ZONE B	\$2,017.26
0239-883-58	ZONE B	\$2,017.26
0239-883-59	ZONE B	\$2,017.26
0239-884-01	ZONE B	\$1,847.03
0239-884-02	ZONE B	\$1,847.03
0239-884-03	ZONE B	\$1,847.03
0239-884-04	ZONE B	\$1,847.03
0239-884-05	ZONE B	\$1,847.03
0239-884-06	ZONE B	\$1,847.03
0239-884-07	ZONE B	\$1,917.03
0239-884-08	ZONE B	\$1,847.03
0239-884-09	ZONE B	\$1,847.03
0239-884-10	ZONE A	\$1,673.63
0239-884-11	ZONE A	\$1,593.02
0239-884-12	ZONE A	\$1,650.82

## Exhibit C

**County of San Bernardino IA No. 1 of CFD No. 2006-1  
FY 2014-2015 Special Tax Levy**

<u>Assessor's Parcel Number</u>	<u>Zone</u>	<u>FY 2014-15 Special Tax</u>
0239-884-13	ZONE A	\$1,673.63
0239-884-14	ZONE A	\$1,650.82
0239-884-15	ZONE A	\$1,673.63
0239-884-16	ZONE A	\$1,593.02
0239-884-17	ZONE A	\$1,576.05
0239-884-18	ZONE A	\$1,650.82
0239-884-19	ZONE A	\$1,593.02
0239-884-20	ZONE A	\$1,650.82
0239-884-21	ZONE A	\$1,576.05
0239-884-22	ZONE A	\$1,593.02
0239-884-23	ZONE A	\$1,650.82
0239-884-24	ZONE A	\$1,673.63
0239-884-25	ZONE A	\$1,650.82
0239-884-26	ZONE A	\$1,673.63
0239-884-27	ZONE A	\$1,593.02
0239-884-28	ZONE A	\$1,673.63
0239-884-29	ZONE A	\$1,650.82
0239-884-30	ZONE A	\$1,673.63
0239-884-31	ZONE A	\$1,650.82
0239-884-32	ZONE A	\$1,593.02
0239-884-33	ZONE A	\$1,673.63
0239-884-34	ZONE A	\$1,650.82
0239-884-35	ZONE A	\$1,673.63
0239-884-36	ZONE A	\$1,593.02
0239-884-37	ZONE A	\$1,593.02
0239-884-38	ZONE A	\$1,650.82
0239-884-39	ZONE A	\$1,673.63
0239-884-40	ZONE A	\$1,576.05
0239-884-41	ZONE A	\$1,538.40
0239-884-42	ZONE A	\$1,538.40
0239-884-43	ZONE A	\$1,673.63
0239-884-44	ZONE A	\$1,538.40
0239-884-45	ZONE A	\$1,576.05
0239-884-46	ZONE A	\$1,593.02
0239-884-47	ZONE A	\$1,650.82
0239-884-48	ZONE A	\$1,576.05
0239-884-49	ZONE A	\$1,576.05
0239-884-50	ZONE A	\$1,593.02
0239-884-51	ZONE A	\$1,650.82
0239-884-52	ZONE A	\$1,576.05
0239-884-53	ZONE A	\$1,650.82
0239-884-54	ZONE A	\$1,576.05
0239-884-55	ZONE A	\$1,593.02
0239-884-56	ZONE A	\$1,650.82
0239-884-57	ZONE A	\$1,576.05
0239-884-58	ZONE A	\$1,593.02
0239-884-59	ZONE A	\$1,576.05

## Exhibit C

**County of San Bernardino IA No. 1 of CFD No. 2006-1  
FY 2014-2015 Special Tax Levy**

<u>Assessor's Parcel Number</u>	<u>Zone</u>	<u>FY 2014-15 Special Tax</u>
0239-885-01	ZONE A	\$1,673.63
0239-885-02	ZONE A	\$1,538.40
0239-885-03	ZONE A	\$1,673.63
0239-885-04	ZONE A	\$1,538.40
0239-885-05	ZONE A	\$1,650.82
0239-885-06	ZONE A	\$1,673.63
0239-885-07	ZONE A	\$1,650.82
0239-885-08	ZONE A	\$1,593.02
0239-885-09	ZONE A	\$1,650.82
0239-885-10	ZONE A	\$1,593.02
0239-885-11	ZONE A	\$1,576.05
0239-885-12	ZONE A	\$1,650.82
0239-885-13	ZONE A	\$1,593.02
0239-885-14	ZONE A	\$1,576.05
0239-885-15	ZONE A	\$1,650.82
0239-885-16	ZONE A	\$1,593.02
0239-885-17	ZONE A	\$1,650.82
0239-885-18	ZONE A	\$1,576.05
0239-885-19	ZONE A	\$1,650.82
0239-885-20	ZONE A	\$1,593.02
0239-885-21	ZONE A	\$1,593.02
0239-885-22	ZONE A	\$1,650.82
0239-885-23	ZONE A	\$1,576.05
0239-885-24	ZONE A	\$1,650.82
0239-885-25	ZONE A	\$1,576.05
0239-885-26	ZONE A	\$1,576.05
0239-885-27	ZONE A	\$1,650.82
0239-886-01	ZONE B	\$2,017.26
0239-886-02	ZONE B	\$2,136.05
0239-886-03	ZONE B	\$2,017.26
0239-886-04	ZONE B	\$2,017.26
0239-886-05	ZONE B	\$2,136.05
0239-886-06	ZONE B	\$2,017.26
0239-886-21	ZONE B	\$1,847.03
0239-886-22	ZONE B	\$1,847.03
0239-886-23	ZONE B	\$1,847.03
0239-886-24	ZONE B	\$1,847.03
0239-886-25	ZONE B	\$1,847.03
0239-886-26	ZONE B	\$1,847.03
0239-886-27	ZONE B	\$1,847.03
0239-886-28	ZONE B	\$1,847.03
0239-886-29	ZONE B	\$1,847.03
0239-886-30	ZONE B	\$1,847.03
0239-886-31	ZONE B	\$1,847.03
0239-886-32	ZONE B	\$1,847.03
0239-886-33	ZONE B	\$1,847.03
0239-886-34	ZONE B	\$1,847.03

## Exhibit C

**County of San Bernardino IA No. 1 of CFD No. 2006-1  
FY 2014-2015 Special Tax Levy**

<u>Assessor's Parcel Number</u>	<u>Zone</u>	<u>FY 2014-15 Special Tax</u>
0239-886-35	ZONE A	\$1,576.05
0239-886-36	ZONE A	\$1,673.63
0239-886-37	ZONE A	\$1,673.63
0239-886-38	ZONE A	\$1,593.02
0239-886-39	ZONE A	\$1,650.82
0239-886-40	ZONE A	\$1,593.02
0239-886-41	ZONE A	\$1,576.05
0239-886-42	ZONE A	\$1,650.82
0239-886-43	ZONE A	\$1,538.40
0239-886-44	ZONE A	\$1,673.63
0239-886-45	ZONE A	\$1,650.82
0239-886-46	ZONE A	\$1,538.40
0239-886-47	ZONE A	\$1,673.63
0239-886-48	ZONE A	\$1,650.82
0239-886-49	ZONE A	\$1,673.63
0239-886-50	ZONE A	\$1,650.82
0239-886-51	ZONE A	\$1,538.40
0239-886-52	ZONE A	\$1,673.63
0239-886-53	ZONE A	\$1,650.82
0239-892-01	ZONE A	\$1,673.63
0239-892-02	ZONE A	\$1,650.82
0239-892-03	ZONE A	\$1,593.02
0239-892-04	ZONE A	\$1,673.63
0239-892-05	ZONE A	\$1,650.82
0239-892-06	ZONE A	\$1,593.02
0239-892-07	ZONE A	\$1,673.63
0239-892-08	ZONE A	\$1,650.82
0239-892-09	ZONE A	\$1,593.02
0239-892-10	ZONE A	\$1,538.40
0239-892-11	ZONE A	\$1,576.05
0239-892-12	ZONE A	\$1,593.02
0239-892-13	ZONE A	\$1,538.40
0239-892-14	ZONE A	\$1,593.02
0239-892-15	ZONE A	\$1,576.05
0239-892-16	ZONE A	\$1,593.02
0239-892-17	ZONE A	\$1,576.05
0239-892-18	ZONE A	\$1,538.40
0239-892-19	ZONE A	\$1,593.02
0239-892-20	ZONE A	\$1,538.40
0239-892-21	ZONE A	\$1,593.02
0239-892-22	ZONE A	\$1,576.05
0239-892-23	ZONE A	\$1,593.02
0239-892-24	ZONE A	\$1,576.05
0239-892-25	ZONE A	\$1,593.02
0239-892-26	ZONE A	\$1,538.40
0239-892-27	ZONE A	\$1,576.05
0239-892-28	ZONE A	\$1,673.63

## Exhibit C

**County of San Bernardino IA No. 1 of CFD No. 2006-1  
FY 2014-2015 Special Tax Levy**

<u>Assessor's Parcel Number</u>	<u>Zone</u>	<u>FY 2014-15 Special Tax</u>
0239-892-29	ZONE A	\$1,650.82
0239-892-30	ZONE A	\$1,673.63
0239-892-31	ZONE A	\$1,650.82
0239-892-32	ZONE A	\$1,593.02
0239-892-33	ZONE A	\$1,673.63
0239-892-34	ZONE A	\$1,650.82
0239-892-35	ZONE A	\$1,593.02
0239-892-36	ZONE A	\$1,673.63
0239-892-37	ZONE A	\$1,650.82
0239-892-38	ZONE A	\$1,576.05
0239-892-39	ZONE A	\$1,593.02
0239-892-40	ZONE A	\$1,576.05
0239-892-41	ZONE A	\$1,593.02
0239-892-42	ZONE A	\$1,576.05
0239-892-43	ZONE A	\$1,538.40
0239-892-44	ZONE A	\$1,593.02
0239-892-45	ZONE A	\$1,576.05
0239-892-46	ZONE A	\$1,538.40
0239-892-47	ZONE A	\$1,593.02
0239-892-48	ZONE A	\$1,576.05
0239-892-49	ZONE A	\$1,576.05
0239-892-50	ZONE A	\$1,593.02
0239-892-51	ZONE A	\$1,538.40
0239-892-52	ZONE A	\$1,576.05
0239-892-53	ZONE A	\$1,593.02
0239-892-54	ZONE A	\$1,576.05
0239-892-55	ZONE A	\$1,593.02
0239-892-56	ZONE A	\$1,538.40
0239-892-57	ZONE A	\$1,593.02
0239-892-58	ZONE A	\$1,576.05
0239-892-59	ZONE A	\$1,538.40
0239-892-60	ZONE A	\$1,593.02
0239-892-61	ZONE A	\$1,576.05
0239-892-62	ZONE A	\$1,593.02
0239-892-63	ZONE A	\$1,576.05
0239-892-64	ZONE A	\$1,593.02
0239-892-65	ZONE A	\$1,538.40
0239-892-66	ZONE A	\$1,593.02
0239-892-67	ZONE A	\$1,538.40
0239-892-68	ZONE A	\$1,576.05
0239-892-69	ZONE A	\$1,593.02
0239-892-70	ZONE A	\$1,538.40
0239-892-71	ZONE A	\$1,576.05
0239-892-72	ZONE A	\$1,593.02
0239-892-73	ZONE A	\$1,593.02
0239-892-74	ZONE A	\$1,576.05
0239-892-75	ZONE A	\$1,593.02

## Exhibit C

**County of San Bernardino IA No. 1 of CFD No. 2006-1  
FY 2014-2015 Special Tax Levy**

<u>Assessor's Parcel Number</u>	<u>Zone</u>	<u>FY 2014-15 Special Tax</u>
0239-892-76	ZONE A	\$1,673.63
0239-892-77	ZONE A	\$1,650.82
0239-892-78	ZONE A	\$1,673.63
0239-892-79	ZONE A	\$1,593.02
0239-892-80	ZONE A	\$1,650.82
0239-892-81	ZONE A	\$1,538.40
0239-892-82	ZONE A	\$1,576.05
0239-892-83	ZONE A	\$1,593.02
0239-892-84	ZONE A	\$1,538.40
0239-892-85	ZONE A	\$1,593.02
0239-892-86	ZONE A	\$1,576.05
0239-892-87	ZONE A	\$1,593.02
0239-892-88	ZONE A	\$1,538.40
0239-892-89	ZONE A	\$1,576.05
0239-892-90	ZONE A	\$1,538.40
0239-892-91	ZONE A	\$1,593.02
0239-892-92	ZONE A	\$1,538.40
0239-893-01	ZONE A	\$1,593.02
0239-893-02	ZONE A	\$1,538.40
0239-893-03	ZONE A	\$1,576.05
0239-893-04	ZONE A	\$1,593.02
0239-893-05	ZONE A	\$1,576.05
0239-893-06	ZONE A	\$1,593.02
0239-893-08	ZONE A	\$1,538.40
0239-893-09	ZONE A	\$1,576.05
0239-893-10	ZONE A	\$1,593.02
0239-893-11	ZONE A	\$1,538.40
0239-893-12	ZONE A	\$1,593.02
0239-893-13	ZONE A	\$1,576.05
0239-893-14	ZONE A	\$1,576.05
0239-893-15	ZONE A	\$1,593.02
0239-893-16	ZONE A	\$1,576.05
0239-893-17	ZONE A	\$1,538.40
0239-893-18	ZONE A	\$1,593.02
0239-893-19	ZONE A	\$1,576.05
0239-893-20	ZONE A	\$1,576.05
0239-893-21	ZONE A	\$1,593.02
0239-893-22	ZONE A	\$1,593.02
0239-893-23	ZONE A	\$1,576.05
0239-893-24	ZONE A	\$1,538.40
0239-893-25	ZONE A	\$1,673.63
0239-893-26	ZONE A	\$1,593.02
0239-893-27	ZONE A	\$1,650.82
0239-893-28	ZONE A	\$1,673.63
0239-893-29	ZONE A	\$1,593.02
0239-893-30	ZONE A	\$1,593.02
0239-893-31	ZONE A	\$1,538.40

## Exhibit C

**County of San Bernardino IA No. 1 of CFD No. 2006-1  
FY 2014-2015 Special Tax Levy**

<u>Assessor's Parcel Number</u>	<u>Zone</u>	<u>FY 2014-15 Special Tax</u>
0239-893-32	ZONE A	\$1,576.05
0239-893-33	ZONE A	\$1,538.40
0239-893-34	ZONE A	\$1,593.02
0239-893-35	ZONE A	\$1,576.05
0239-893-36	ZONE A	\$1,593.02
0239-893-37	ZONE A	\$1,538.40
0239-893-38	ZONE A	\$1,593.02
0239-893-39	ZONE A	\$1,650.82
0239-893-40	ZONE A	\$1,673.63
0239-893-41	ZONE A	\$1,593.02
0239-893-42	ZONE A	\$1,650.82
0239-893-43	ZONE A	\$1,538.40
0239-893-44	ZONE A	\$1,576.05
0239-893-45	ZONE A	\$1,650.82
0239-893-46	ZONE A	\$1,538.40
0239-893-47	ZONE A	\$1,650.82
0239-893-48	ZONE A	\$1,673.63
0239-893-49	ZONE A	\$1,650.82
0239-893-50	ZONE A	\$1,673.63
0239-893-51	ZONE A	\$1,593.02
0239-893-52	ZONE A	\$1,673.63
0239-893-53	ZONE A	\$1,650.82
0239-893-54	ZONE A	\$1,673.63
0239-893-55	ZONE A	\$1,650.82
0239-893-56	ZONE A	\$1,673.63
0239-893-57	ZONE A	\$1,593.02
0239-893-58	ZONE B	\$1,847.03
0239-893-59	ZONE B	\$1,917.03
0239-893-60	ZONE B	\$1,847.03
0239-893-61	ZONE B	\$1,917.03
0239-893-62	ZONE B	\$2,017.26
0239-893-63	ZONE B	\$2,017.26
0239-893-64	ZONE B	\$2,136.05
0239-894-01	ZONE B	\$1,917.03
0239-894-02	ZONE B	\$1,847.03
0239-894-03	ZONE B	\$1,917.03
0239-894-12	ZONE B	\$1,847.03
0239-894-13	ZONE B	\$1,847.03
0239-894-14	ZONE B	\$1,847.03
0239-894-15	ZONE B	\$1,847.03
0239-894-16	ZONE B	\$1,847.03
0239-894-17	ZONE B	\$1,847.03
0239-894-18	ZONE B	\$1,847.03
0239-894-19	ZONE B	\$1,847.03
0239-894-22	ZONE B	\$1,847.03
0239-894-23	ZONE B	\$1,847.03
0239-894-24	ZONE B	\$1,917.03



## Exhibit C

**County of San Bernardino IA No. 1 of CFD No. 2006-1  
FY 2014-2015 Special Tax Levy**

<u>Assessor's Parcel Number</u>	<u>Zone</u>	<u>FY 2014-15 Special Tax</u>
0239-894-29	ZONE B	\$1,847.03
0239-894-30	ZONE B	\$1,847.03
0239-894-31	ZONE B	\$1,847.03
0239-894-32	ZONE B	\$1,847.03
0239-894-33	ZONE B	\$1,847.03
0239-894-34	ZONE B	\$1,847.03
0239-894-35	ZONE B	\$1,917.03
0239-894-36	ZONE B	\$1,847.03
0239-894-37	ZONE B	\$1,917.03
0239-894-38	ZONE B	\$1,917.03
0239-894-39	ZONE B	\$1,847.03
0239-894-40	ZONE B	\$1,847.03
0239-894-41	ZONE B	\$1,917.03
0239-894-42	ZONE B	\$1,847.03
0239-894-43	ZONE B	\$1,847.03
0239-894-44	ZONE B	\$1,917.03
0239-894-45	ZONE B	\$1,847.03
0239-894-46	ZONE B	\$1,917.03
0239-894-47	ZONE B	\$1,847.03
0239-894-48	ZONE B	\$1,847.03
0239-894-49	ZONE B	\$1,847.03
0239-895-01	ZONE B	\$1,847.03
0239-895-02	ZONE B	\$1,847.03
0239-895-03	ZONE B	\$1,847.03
0239-895-04	ZONE B	\$1,847.03
0239-895-05	ZONE B	\$1,847.03
0239-895-06	ZONE B	\$1,847.03
0239-895-07	ZONE B	\$1,847.03
0239-895-08	ZONE B	\$1,847.03
0239-895-09	ZONE B	\$2,017.26
0239-895-10	ZONE B	\$2,017.26
0239-895-11	ZONE B	\$2,136.05
0239-895-12	ZONE B	\$2,017.26
0239-895-13	ZONE B	\$2,136.05
0239-895-14	ZONE B	\$2,017.26
0239-895-15	ZONE B	\$1,847.03
0239-895-17	ZONE B	\$2,136.05
0239-895-18	ZONE B	\$2,017.26
0239-895-19	ZONE B	\$2,017.26
0239-895-26	ZONE B	\$1,847.03
0239-895-27	ZONE B	\$1,847.03
0239-895-28	ZONE B	\$1,847.03
0239-895-29	ZONE B	\$1,847.03
0239-895-30	ZONE B	\$1,847.03
0239-895-31	ZONE B	\$1,847.03
0239-895-32	ZONE B	\$1,847.03
0239-895-33	ZONE B	\$1,847.03

## Exhibit C

**County of San Bernardino IA No. 1 of CFD No. 2006-1  
FY 2014-2015 Special Tax Levy**

<u>Assessor's Parcel Number</u>	<u>Zone</u>	<u>FY 2014-15 Special Tax</u>
0239-895-44	ZONE B	\$1,847.03
0239-895-45	ZONE B	\$1,847.03
0239-895-46	ZONE B	\$1,847.03
0239-896-01	ZONE A	\$1,593.02
0239-896-02	ZONE A	\$1,576.05
0239-896-03	ZONE A	\$1,593.02
0239-896-04	ZONE A	\$1,576.05
0239-896-05	ZONE A	\$1,593.02
0239-896-06	ZONE A	\$1,538.40
0239-896-07	ZONE A	\$1,593.02
0239-896-08	ZONE A	\$1,576.05
0239-896-09	ZONE A	\$1,538.40
0239-896-10	ZONE A	\$1,593.02
0239-896-11	ZONE A	\$1,673.63
0239-896-12	ZONE A	\$1,593.02
0239-896-13	ZONE A	\$1,673.63
0239-896-14	ZONE A	\$1,650.82
0239-896-15	ZONE A	\$1,673.63
0239-896-16	ZONE A	\$1,650.82
0239-896-17	ZONE A	\$1,673.63
0239-896-18	ZONE A	\$1,650.82
0239-896-19	ZONE A	\$1,673.63
0239-896-20	ZONE A	\$1,650.82
0239-896-21	ZONE A	\$1,673.63
0239-896-22	ZONE A	\$1,593.02
0239-896-23	ZONE A	\$1,538.40
0239-896-24	ZONE A	\$1,576.05
0239-896-25	ZONE A	\$1,538.40
0239-896-26	ZONE A	\$1,576.05
0239-896-27	ZONE A	\$1,593.02
0239-896-28	ZONE A	\$1,538.40
0239-896-29	ZONE A	\$1,593.02
0239-896-30	ZONE A	\$1,673.63
0239-896-31	ZONE A	\$1,650.82
0239-896-32	ZONE A	\$1,593.02
0239-896-33	ZONE A	\$1,673.63
0239-896-34	ZONE A	\$1,650.82
0239-896-35	ZONE A	\$1,673.63
0239-896-36	ZONE A	\$1,593.02
0239-896-37	ZONE A	\$1,673.63
0239-896-38	ZONE A	\$1,650.82
0239-896-39	ZONE A	\$1,673.63
0239-896-40	ZONE A	\$1,593.02
0239-896-41	ZONE A	\$1,576.05
0239-896-42	ZONE A	\$1,593.02
0239-896-43	ZONE A	\$1,538.40
0239-896-44	ZONE A	\$1,593.02

**Exhibit C**

**County of San Bernardino IA No. 1 of CFD No. 2006-1  
FY 2014-2015 Special Tax Levy**

<u>Assessor's Parcel Number</u>	<u>Zone</u>	<u>FY 2014-15 Special Tax</u>
0239-896-45	ZONE A	\$1,576.05
0239-896-46	ZONE A	\$1,593.02
<b>Total FY 2014-15 Special Tax Levy</b>		<b>\$720,990.34</b>
<b>Total Number of Parcels Taxed</b>		<b>424</b>