



Public Works Special Districts

County Service Area (CSA) 70 S-3

LYTLE CREEK

RATE MEETING

Please join the San Bernardino County's Department of Public Works – Special Districts Water and Sanitation regarding your sewer rates.

- Ask questions about your sewer service.
- Review your existing rates and discuss why we are proposing an increase for five years starting in July of 2026.
- Outline how revenue is spent and what projects we are working on in your district.

WHEN

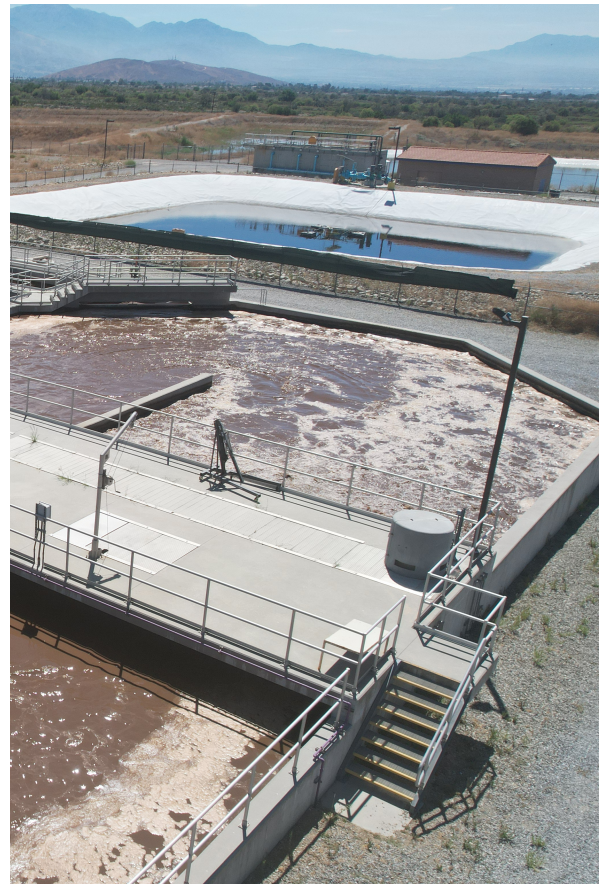
- Tuesday, March 31, 2026
- 6:00 pm – 8:00 pm

WHERE

- Lytle Creek Community Center
14082 Center Road, Lytle Creek, CA

QUESTIONS

- Janine Valenzuela contact (909) 386 - 8881
or jvalenzuela@sdd.sbcounty.gov



Public Works, Special Districts - Water and Sanitation Division

(760) 955.9885 • SpecialDistricts.SBCounty.gov/WAS

