



CSA 70 R-20 (FLAMINGO HEIGHTS)

DECEMBER 4, 2025



**Department of Public Works
Special Districts**

Henry Mac
Rudy Guerrero

WHAT IS A SPECIAL DISTRICT?

- A Special District is a form of local government created by a community to provide a specific service (or set of services) that the city or county does not directly provide.

Key Characteristics

Single-purpose focus: Unlike cities or counties, which handle many different responsibilities, special districts are usually formed for one or a few specific services such as water, sewer, parks, fire protection, lighting, or road maintenance.

Defined boundaries: Each district serves a particular geographic area. The boundaries may include a small neighborhood, a rural community, or multiple communities.

Funding: They are funded through property taxes, special assessments, service fees, or grants. The residents who benefit from the services pay for them, rather than spreading costs across the entire county or state.

Why do Special Districts Exist?

Special districts exist because some areas, especially unincorporated communities, don't have access to full municipal services. They allow residents to organize and pay for the specific services they need without having to form a new city or rely solely on the county.



SPECIAL DISTRICTS

Helping residents access municipal services



Road Maintenance



Parks & Rec



Landscape Maintenance



Water & Sanitation



Street Lights



Storm Drains



Snow Plowing



Zoo



Community Centers



Road Grading



Refuse Site

WHAT HAPPENED TO GAS TAX?

Gas tax dollars can only be spent on roads that are part of the **County Maintained Road System (CMRS)**.

If a road is **not officially accepted into the CMRS**, it **does not qualify** for gas tax funding.

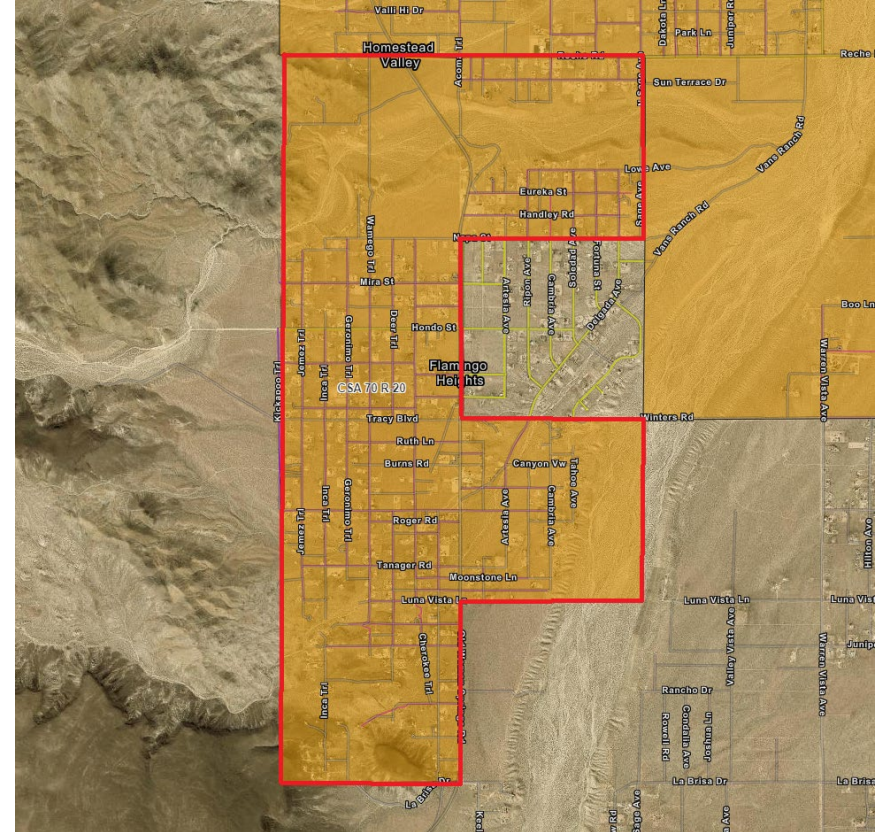
This means most dirt roads, private roads, or some mountain roads are not eligible.

Gas tax money is restricted by law and must be used only on eligible, paved public roads accepted into the CMRS.



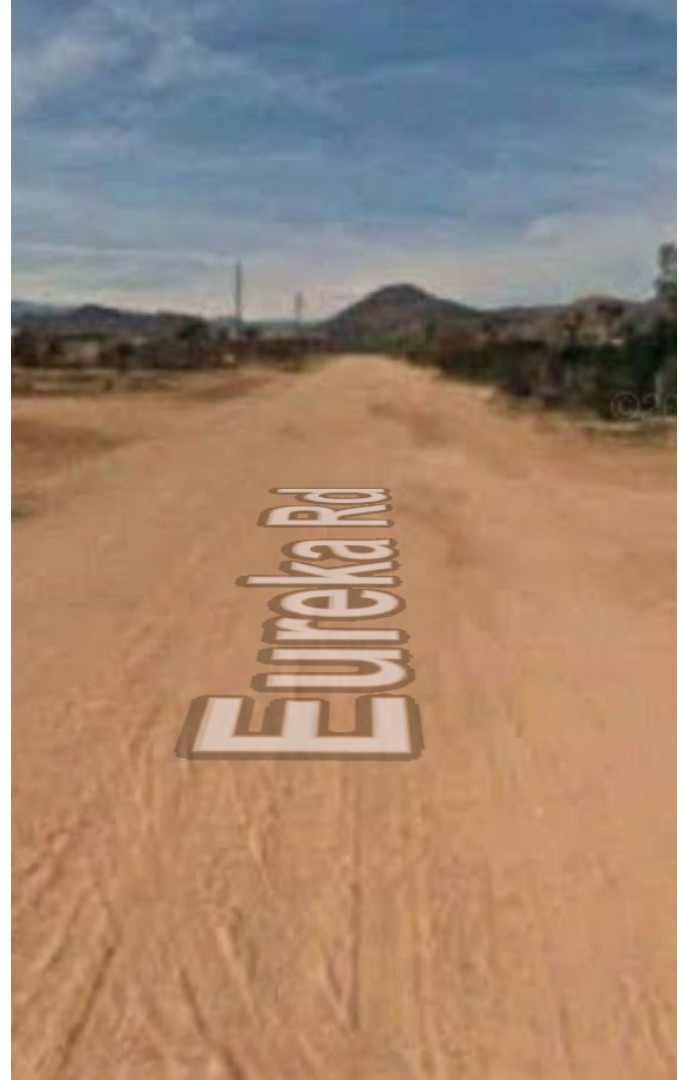
DISTRICT INFORMATION

- 760 Parcels
- District was formed in 1986
- Current annual service charge per parcel:
 - \$15 per year per parcel
- Proposed annual service charge per parcel
 - \$90 per parcel per year
 - O&M is subject to an annual inflationary increase of up to 3.0%
- Operations and maintenance fee unchanged since 1986
- Current Revenue: \$11,400/yr
- Projected Revenue: \$68,400/yr



OPERATION AND MAINTENANCE

- O&M service charge is currently expected to cover:
 - Quarterly inspections
 - Periodic fixing of road issues (erosions, wash outs, ruts, dumping, roadblocks, etc)
 - Road grading 2-4 times per year



NEXT STEPS

- Proposition 218 notices will be sent to all property owners with information and date and time of a Public Protest Hearing.
- A mailed-ballot election will follow if no majority protest exists.
- **If the election passes:** The new annual service charge will be adopted and collection will begin on the next property tax roll to fund ongoing road maintenance and operations.
- **If the election fails:** The annual service charge increase cannot be adopted. As a result, road maintenance and services will be reduced, delayed, or discontinued, and the district will be considered for dissolution.





Public Works
Special Districts

THANK YOU

Questions?